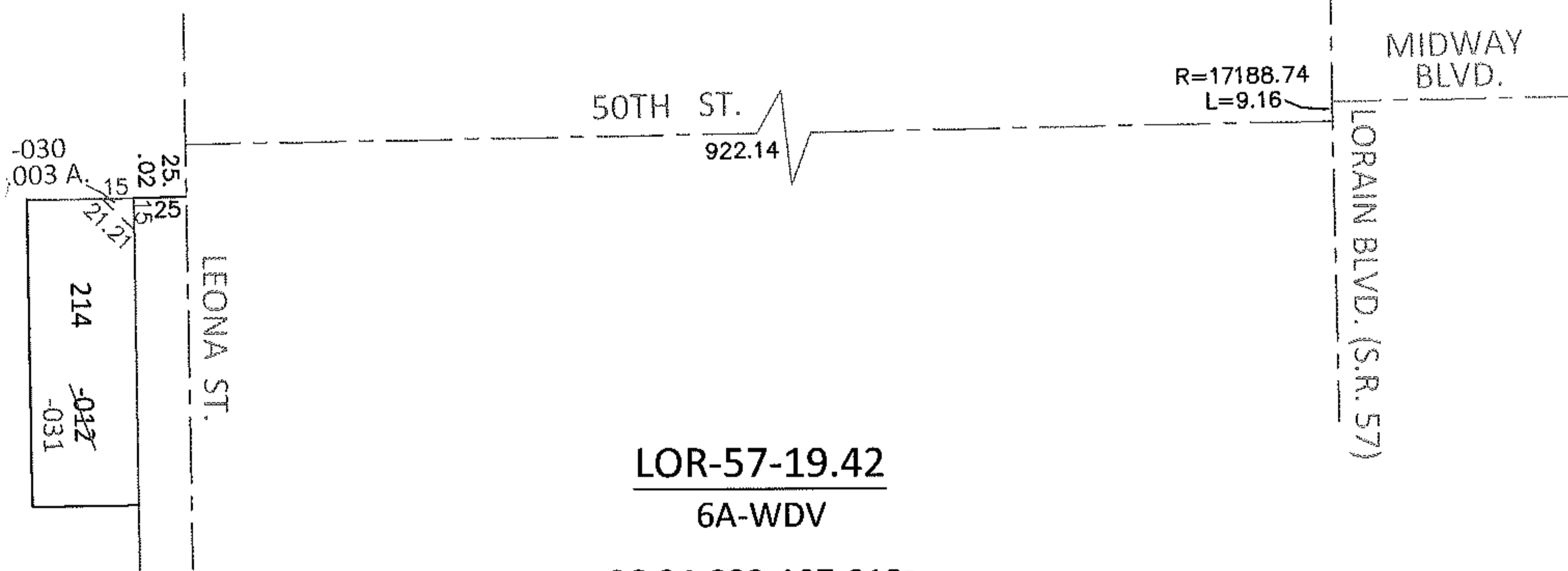
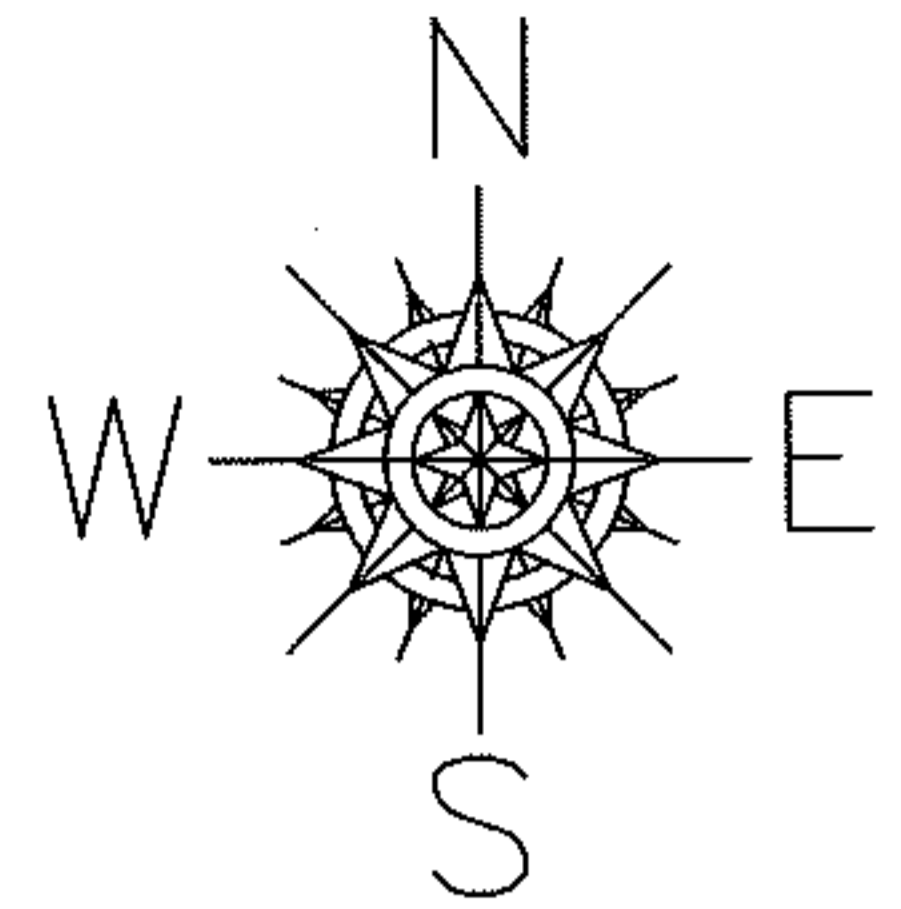


PARENT PARCEL: 06-24-032-107-012

CHILD PARCEL: 06-24-032-107-030, -031

STARTING POINT: INTERSECTION OF C/L OF S.R. 57 AND C/L OF MIDWAY BLVD.

13-00445



LOR-57-19.42

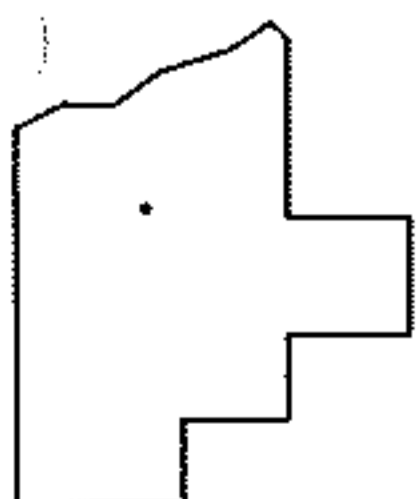
6A-WDV

06-24-032-107-012

50 X 145

06-24-032-107-030
0.003 A.

06-24-032-107-031
35 X 150 IRR



SPLITS/DEEDS PROCESSED

LORAIN COUNTY TAX MAP DEPARTMENT
226 MIDDLE AVE. ELYRIA, OHIO

SURVEYED BY: TREVOR A. BIXLER

CLOSURE: .00:10,000

MAP PAGE(S): 6-45

APPROVED BY: RRM DATE: 7-16-13

SCALE: 1"= 100 PRIOR INST.: 20070231566