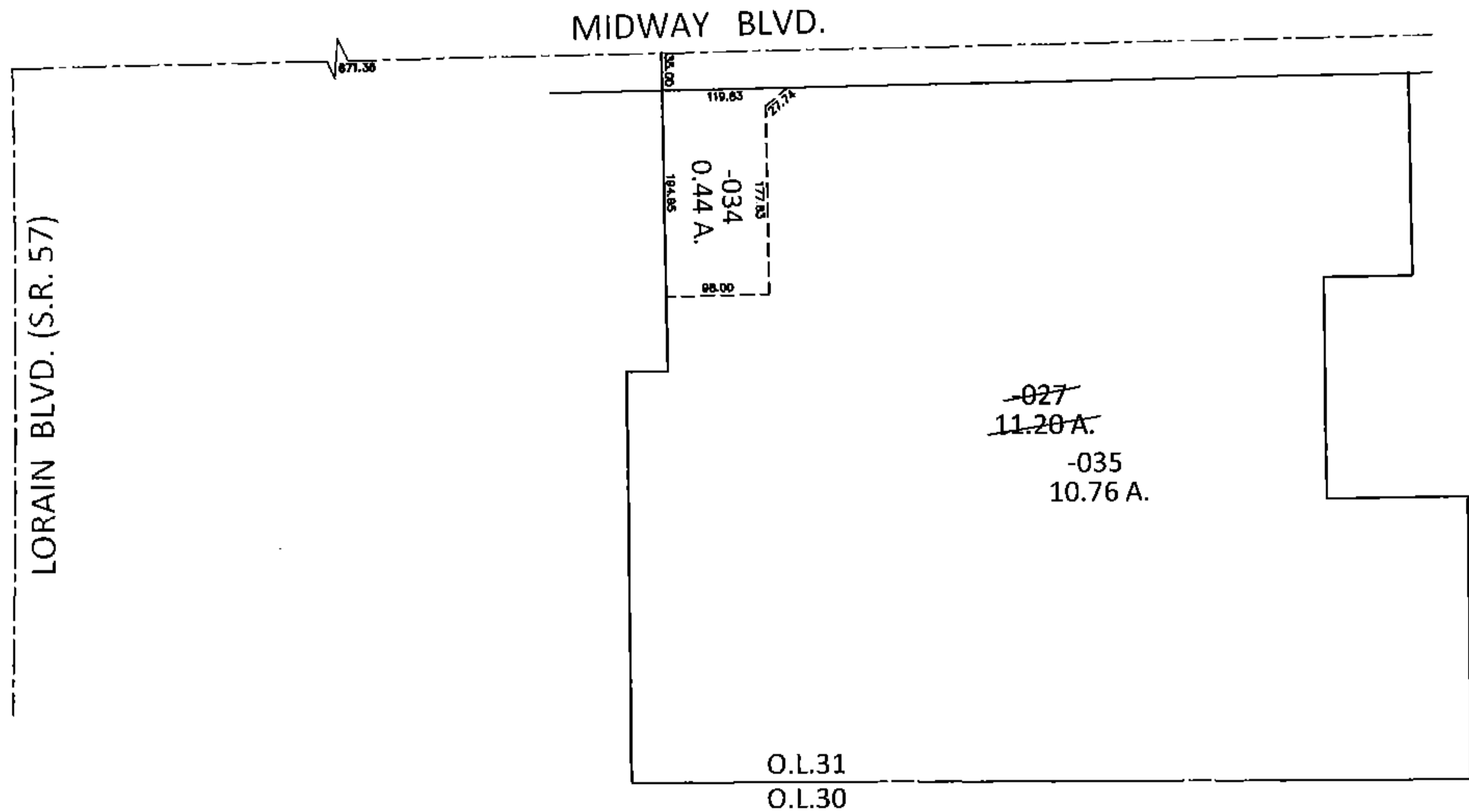
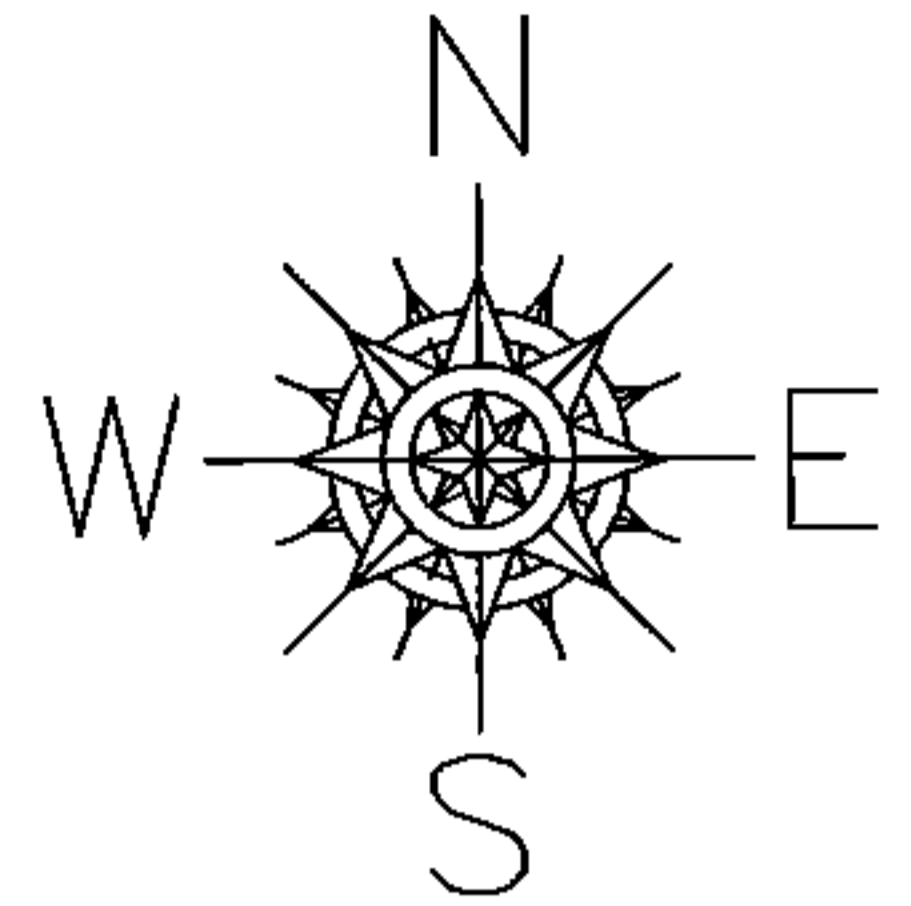


PARENT PARCEL: 06-24-031-107-027

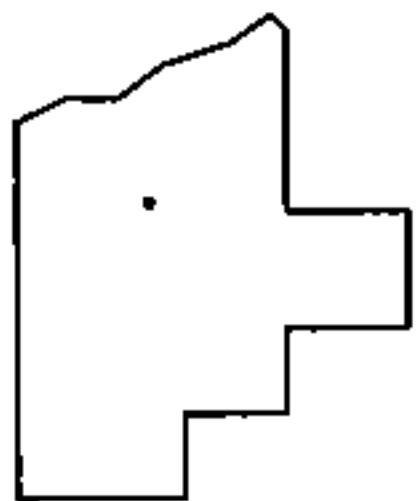
CHILD PARCEL: 06-24-031-107-034, -035

STARTING POINT: INTERSECTION OF C/L OF S.R.57 AND C/L OF MIDWAY BLVD.

13-00444



LOR-57-19.42  
4-WDV



SPLITS/DEEDS PROCESSED

LORAIN COUNTY TAX MAP DEPARTMENT  
226 MIDDLE AVE. ELYRIA, OHIO

SURVEYED BY: TREVOR A. BIXLER

CLOSURE: .01:10,000

MAP PAGE(S): 6-46

APPROVED BY: RRM DATE: 7-16-13

SCALE: 1"=200 PRIOR INST.: 20060150356