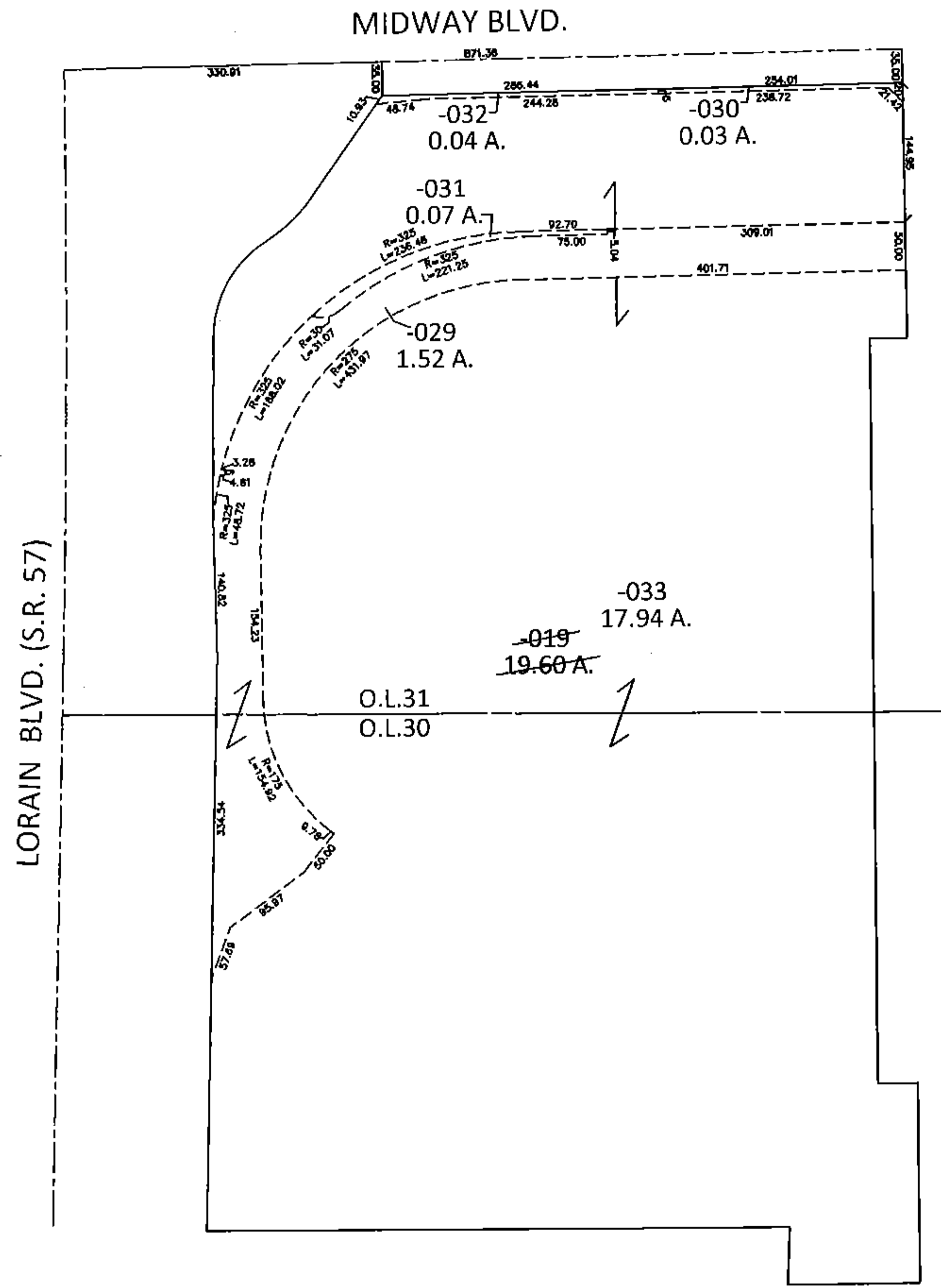
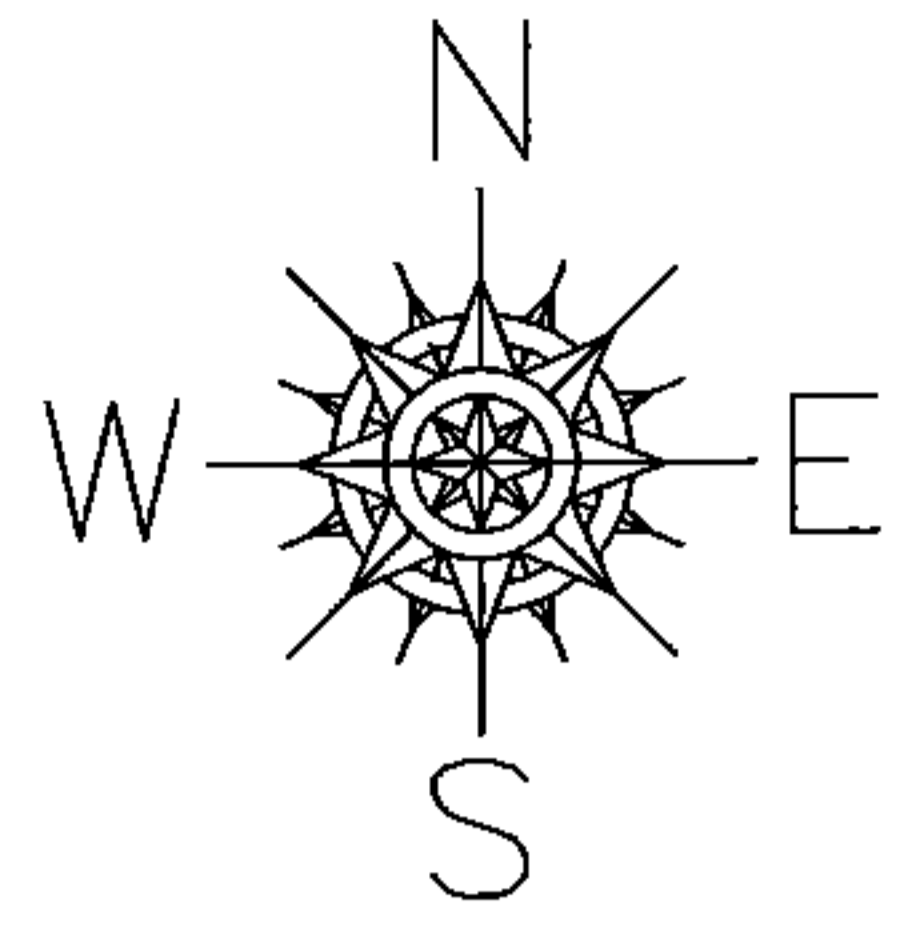
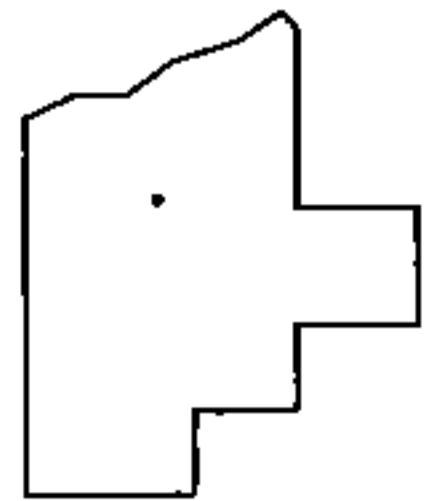


PARENT PARCEL: 06-24-031-107-019  
 CHILD PARCEL: 06-24-031-107-029 THRU -033  
 STARTING POINT: INTERSECTION OF C/L OF S.R. 57 AND C/L OF MIDWAY BLVD.

**13-00443**



**LOR-57-19.42**  
 3WDV-1  
 3WDV-2  
 3AWDV-1  
 3AWDV-2



**SPLITS/DEEDS PROCESSED**  
 LORAIN COUNTY TAX MAP DEPARTMENT  
 226 MIDDLE AVE. ELYRIA, OHIO

SURVEYED BY: TREVOR A. BIXLER  
 CLOSURE: .01:10,000  
 MAP PAGE(S): 6-46  
 APPROVED BY: RRM DATE: 7-16-13  
 SCALE: 1"= 200 PRIOR INST.: DV 901/526