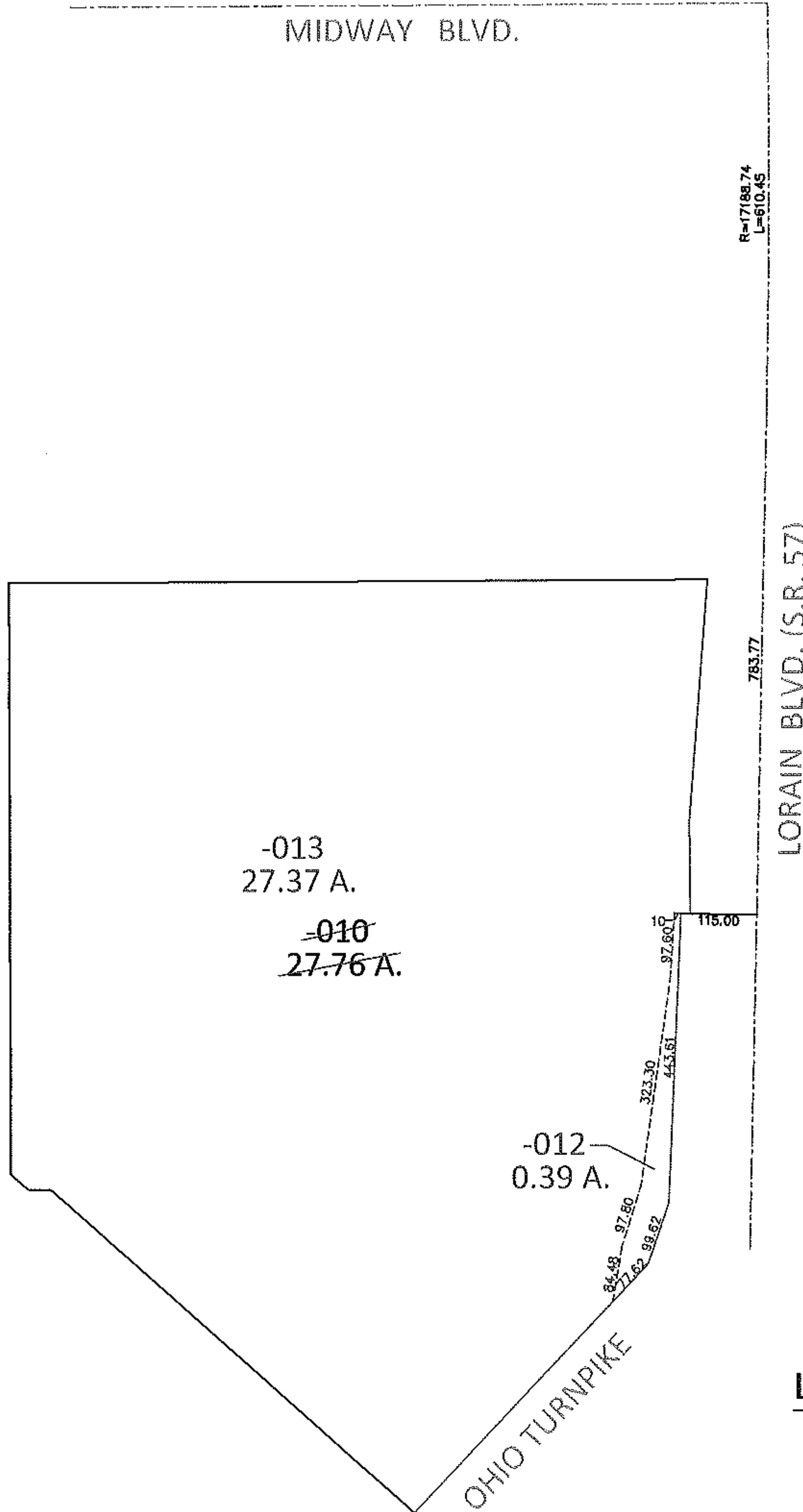
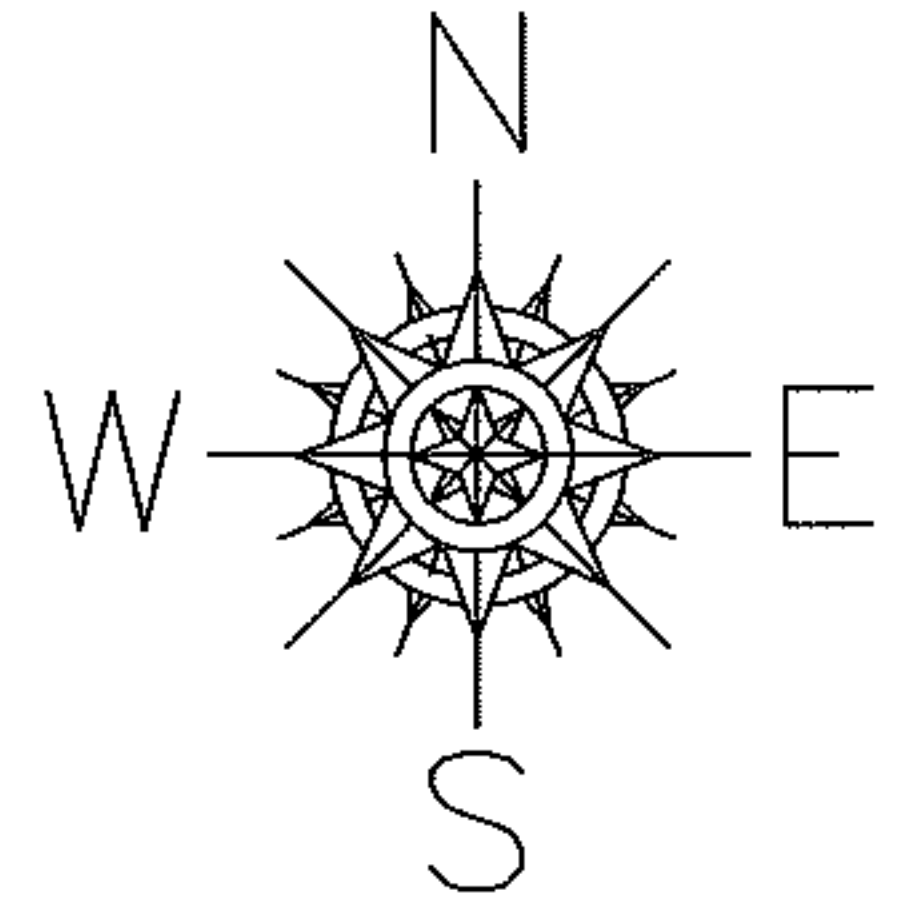


PARENT PARCEL: 06-24-033-102-010

CHILD PARCEL: 06-24-033-102-012, -013

13-00441

STARTING POINT: INTERSECTION OF C/L OF S.R.57 AND C/L OF MIDWAY BLVD.



-013
27.37 A.

~~-010~~
~~27.76 A.~~

-012
0.39 A.

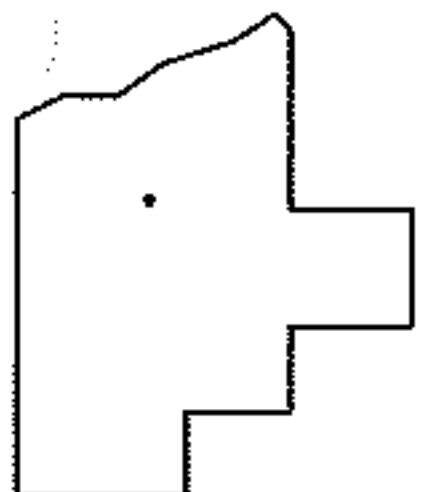
R=17188.74
L=610.45

783.77

LORAIN BLVD. (S.R. 57)

LOR-57-19.42

1-WLV



SPLITS/DEEDS PROCESSED

LORAIN COUNTY TAX MAP DEPARTMENT
226 MIDDLE AVE. ELYRIA, OHIO

SURVEYED BY: TREVOR A. BIXLER

CLOSURE: .01:10,000

MAP PAGE(S): 6-45, 6-63

APPROVED BY: RRM DATE: 7-15-13

SCALE: 1"= 300 PRIOR INST.: 20070210510