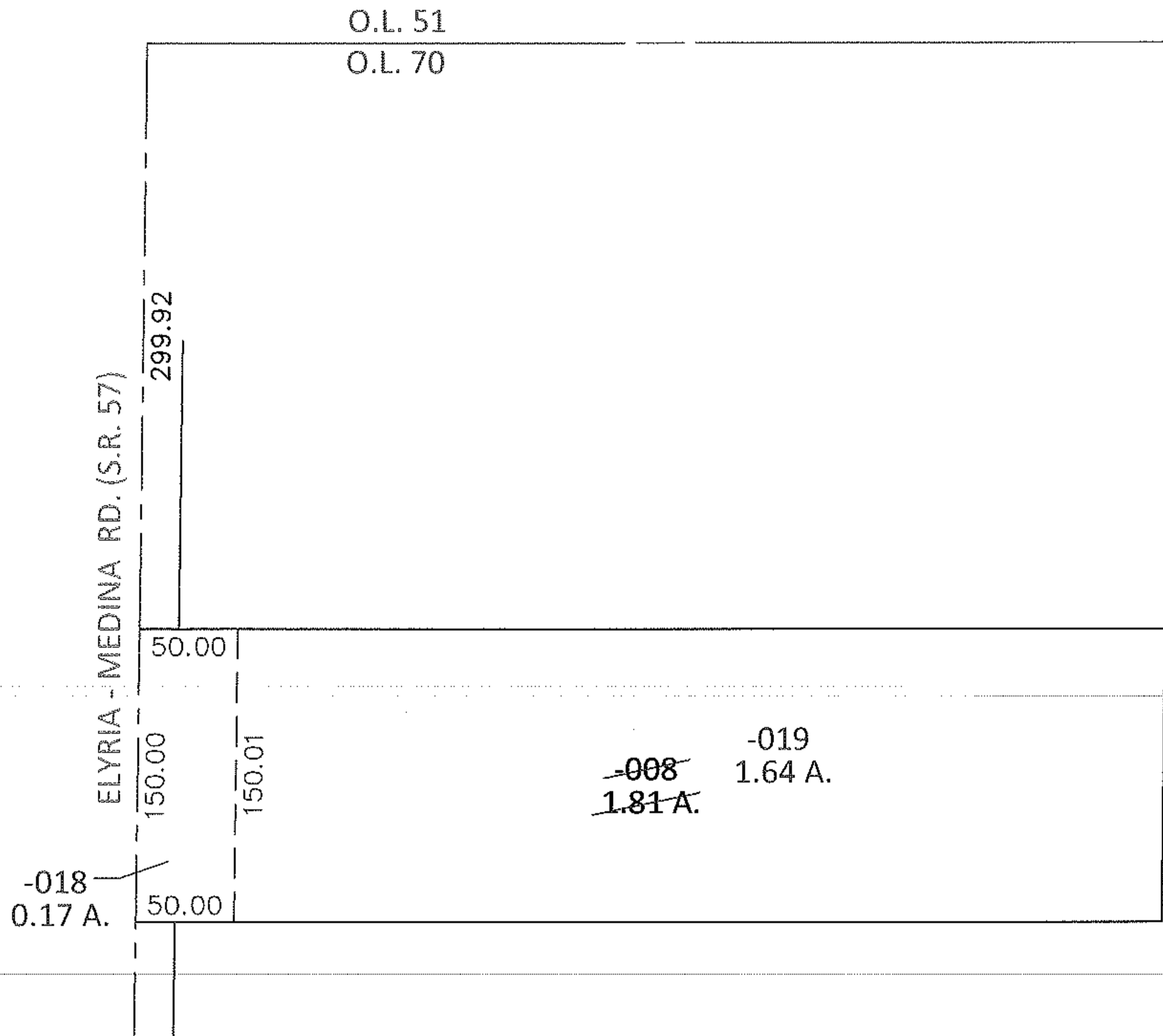
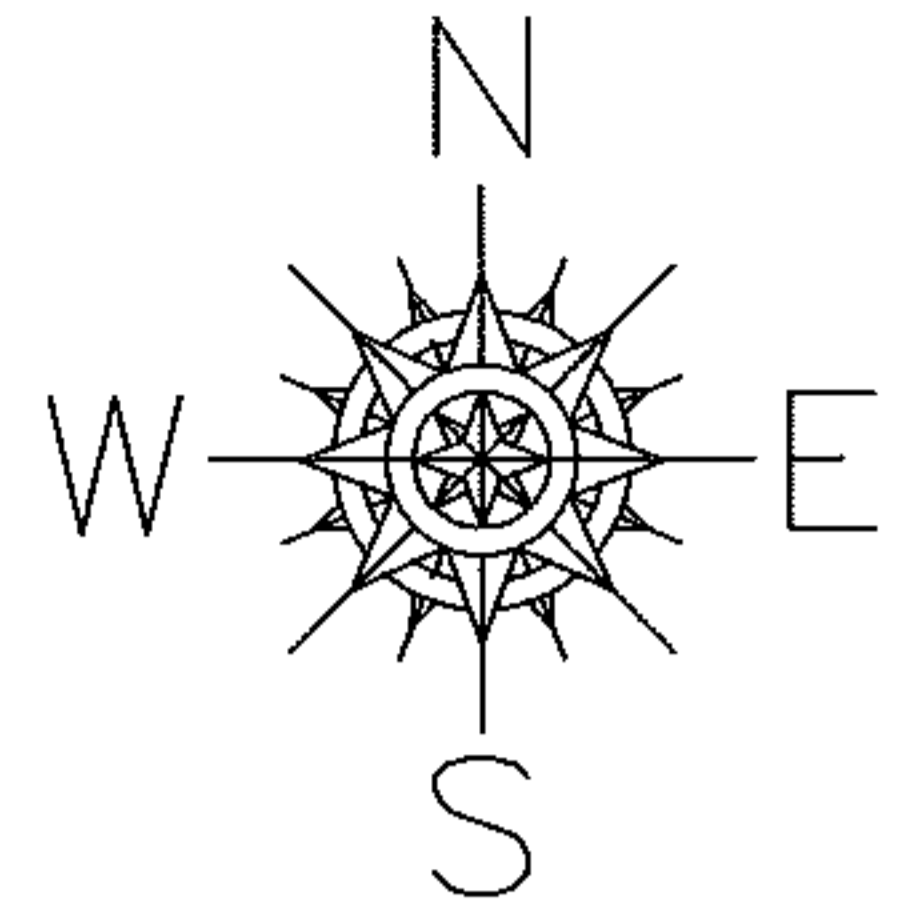


PARENT PARCEL: 16-00-070-000-008

CHILD PARCEL: 16-00-070-000-018, -019

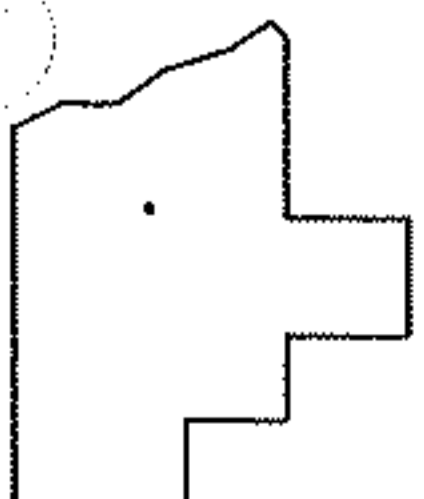
STARTING POINT: NORTHWEST CORNER OF O.L.70

13-00438



LOR-57-2.22

7-WD



SPLITS/DEEDS PROCESSED

LORAIN COUNTY TAX MAP DEPARTMENT  
226 MIDDLE AVE. ELYRIA, OHIO

SURVEYED BY: KEVIN CANAVAN

CLOSURE: .00:10,000

MAP PAGE(S): 16-H

APPROVED BY: RRM DATE: 6-26-13

SCALE: 1"= 100 PRIOR INST.: OR 378/65