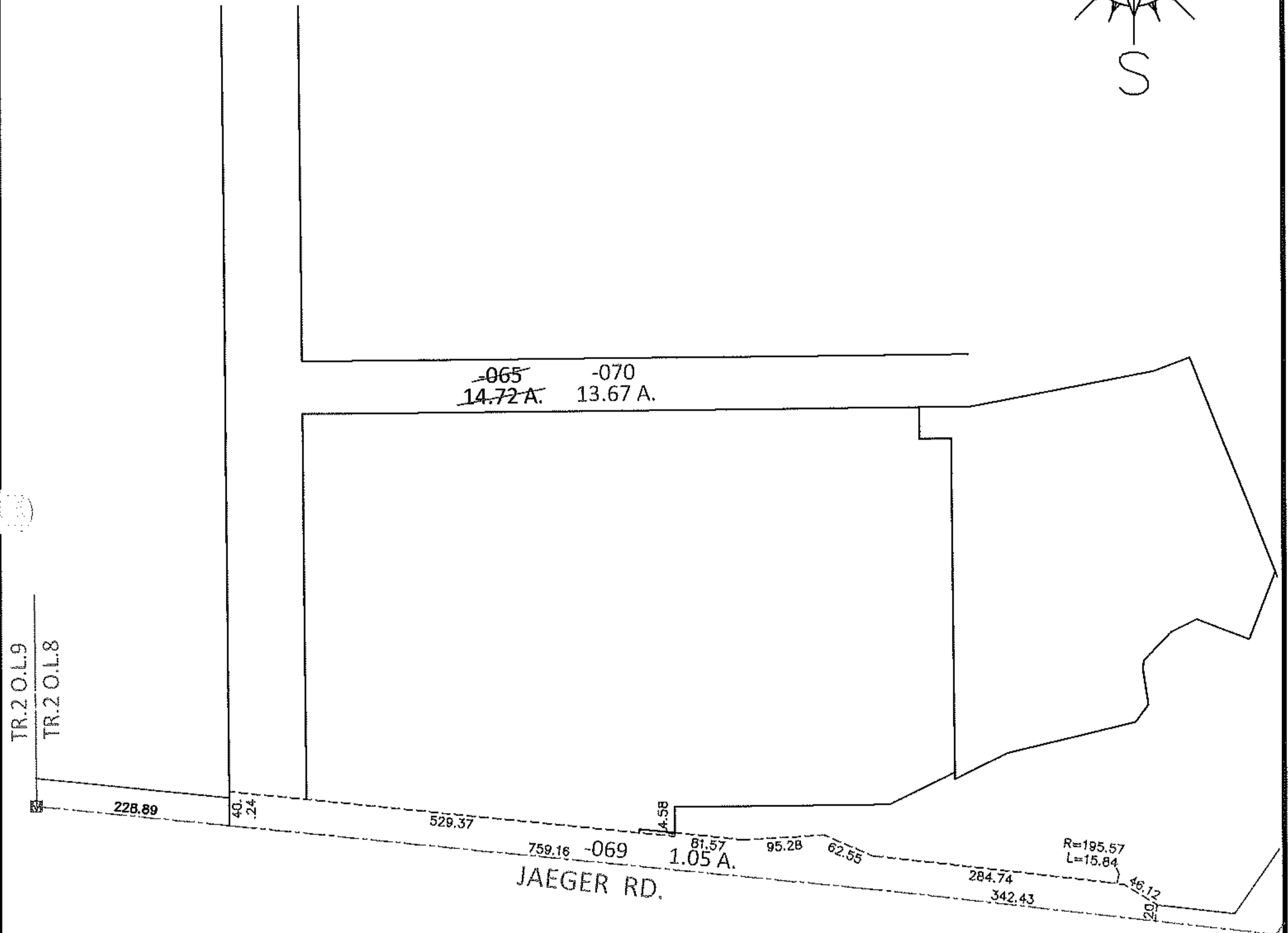
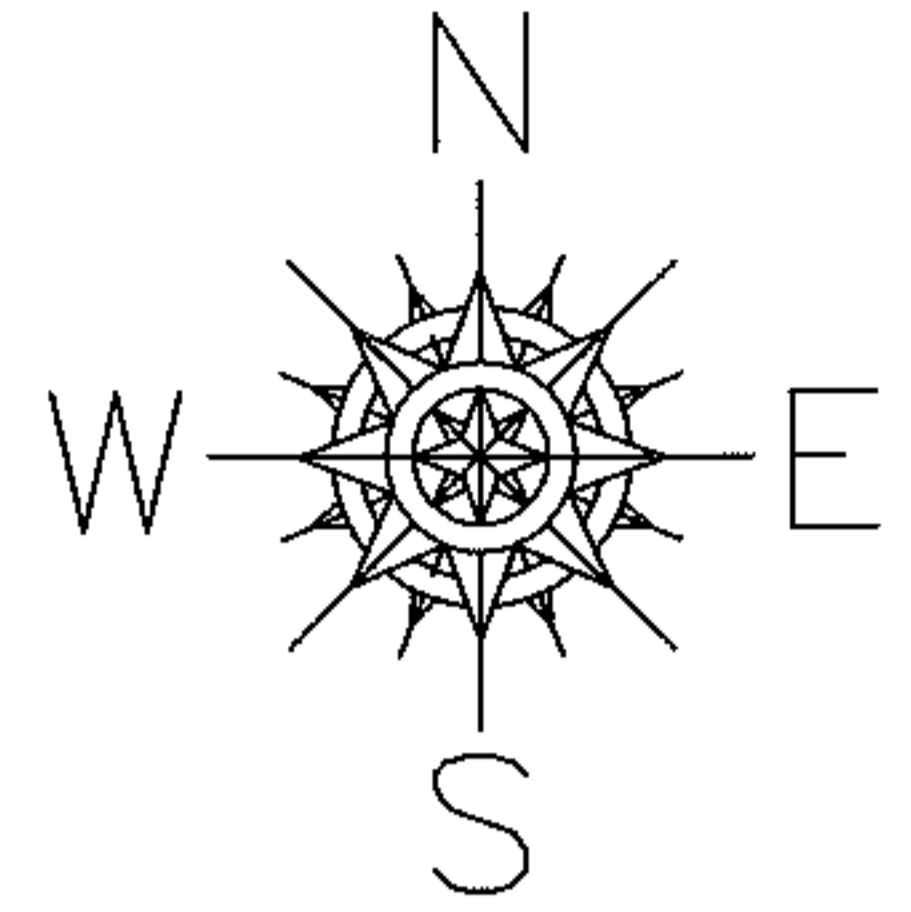


PARENT PARCEL: 02-02-008-107-065

CHILD PARCEL: 02-02-008-107-069, -070

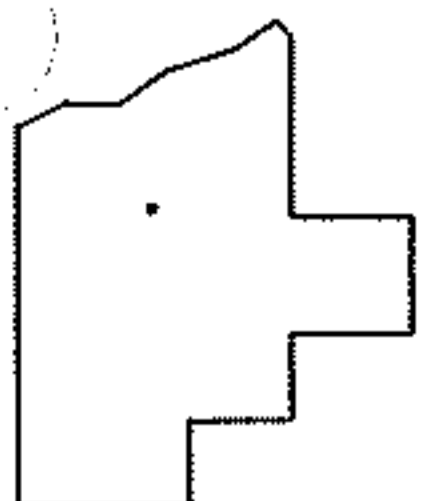
13-00435

STARTING POINT: AT A MON BOX AT THE INTERSECTION OF C/L OF JAEGER RD. AND WEST LINE OF TR. 2 O.L.8



LOR - JAEGER ROAD

59 WD



SPLITS/DEEDS PROCESSED

LORAIN COUNTY TAX MAP DEPARTMENT  
226 MIDDLE AVE. ELYRIA, OHIO

SURVEYED BY: TREVOR A. BIXLER

CLOSURE: .01:10,000

MAP PAGE(S): 2-02-008-A & B

APPROVED BY: RRM DATE: 5-20-13

SCALE: 1"= 200 PRIOR INST.: 20090290055