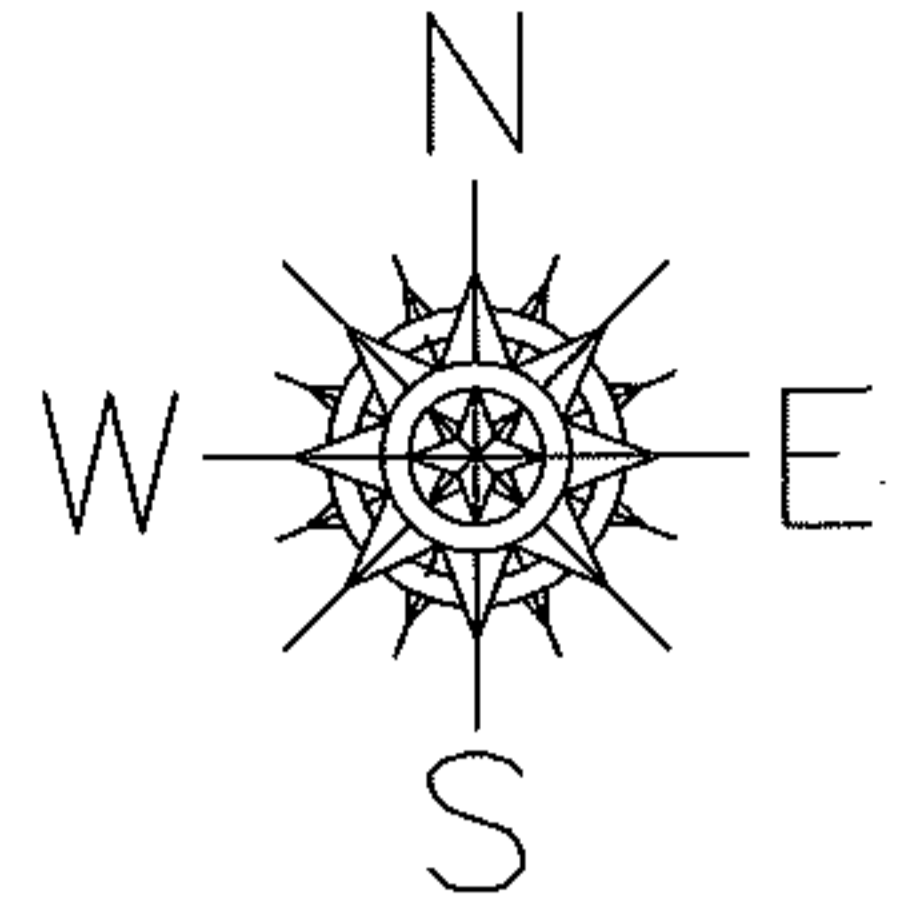


PARENT PARCEL: 02-02-009-101-027

CHILD PARCEL: 02-02-009-101-085, -086

13-00427

STARTING POINT: AT A MON BOX AT THE INTERSECTION OF C/L OF JAEGER RD. AND WEST LINE OF TR.2 O.L.9

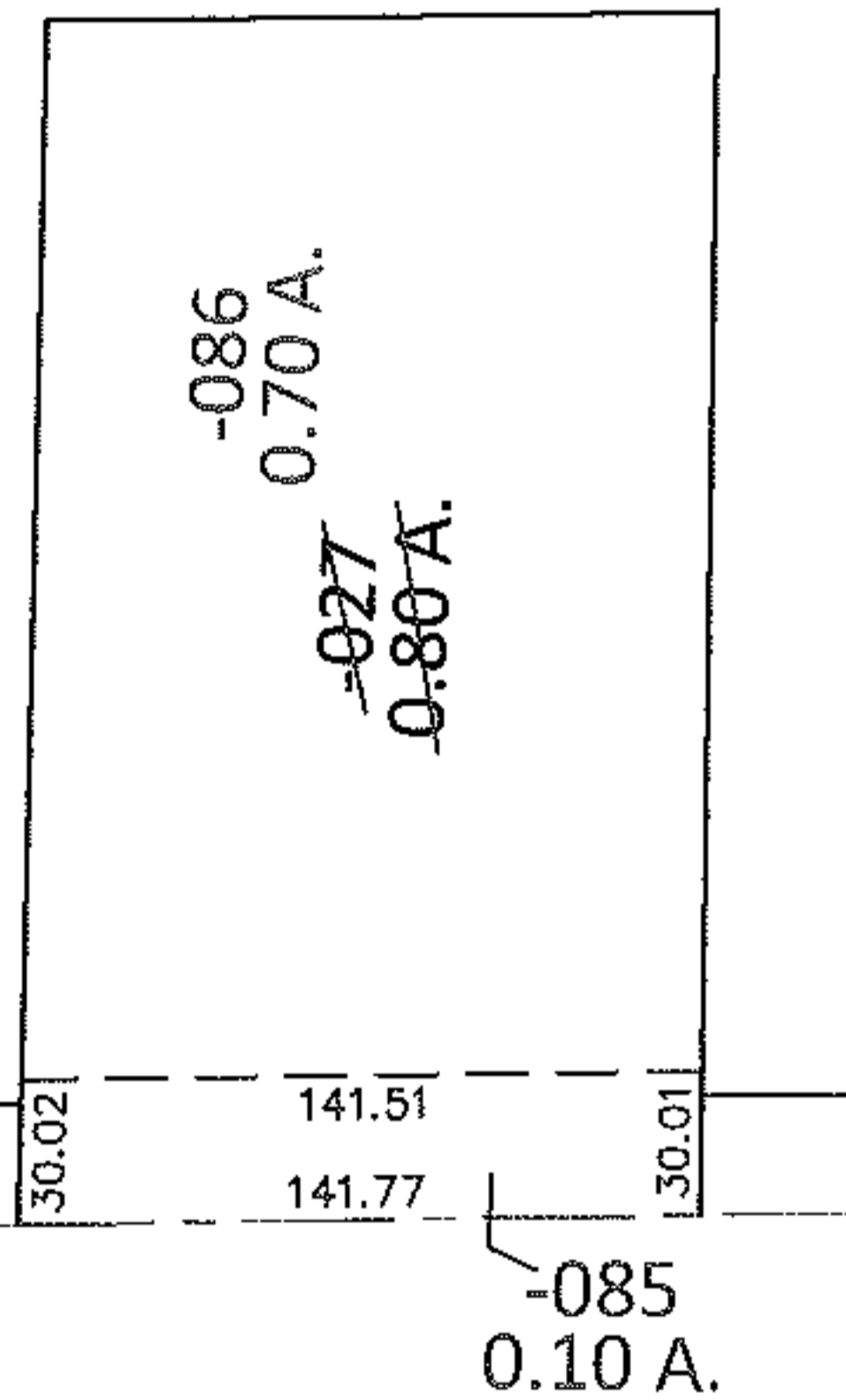


TR.2 O.L.10
TR.2 O.L.9



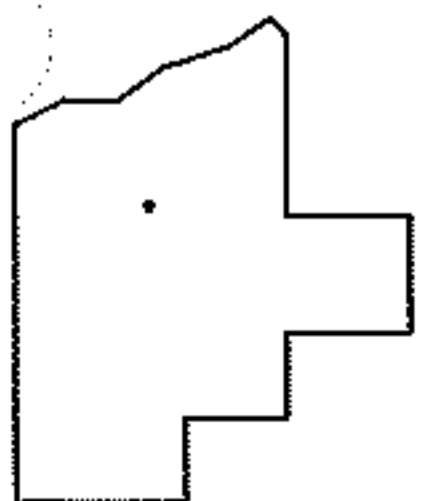
474.03

JAEGER RD.



LOR-JAEGER RD.

31 WD



SPLITS/DEEDS PROCESSED

LORAIN COUNTY TAX MAP DEPARTMENT
226 MIDDLE AVE. ELYRIA, OHIO

SURVEYED BY: TREVOR A. BIXLER

CLOSURE: .00:10,000

MAP PAGE(S): 2-02-009-A

APPROVED BY: RRM DATE: 2-27-13

SCALE: 1"= 100 PRIOR INST.: 20030930846