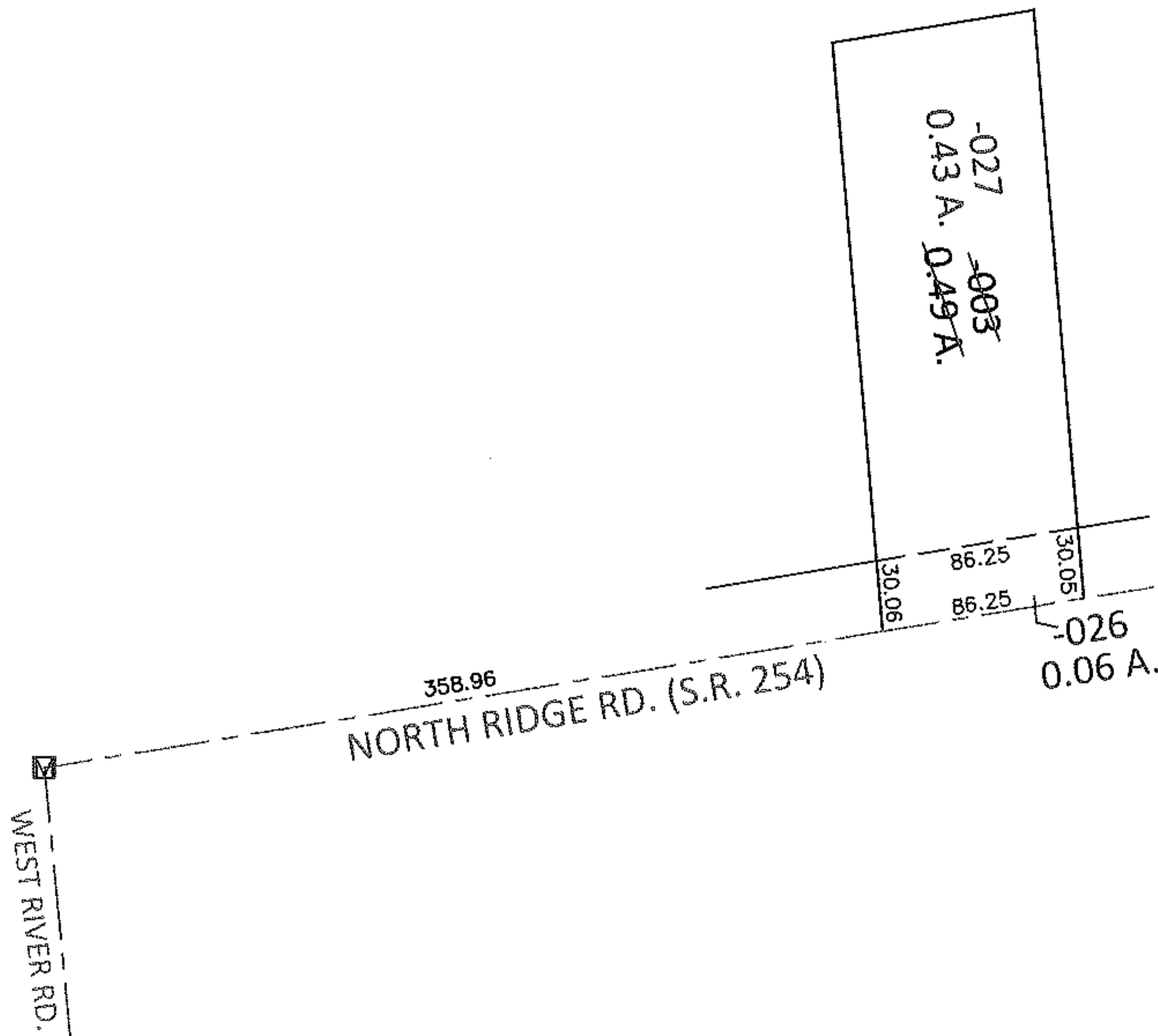
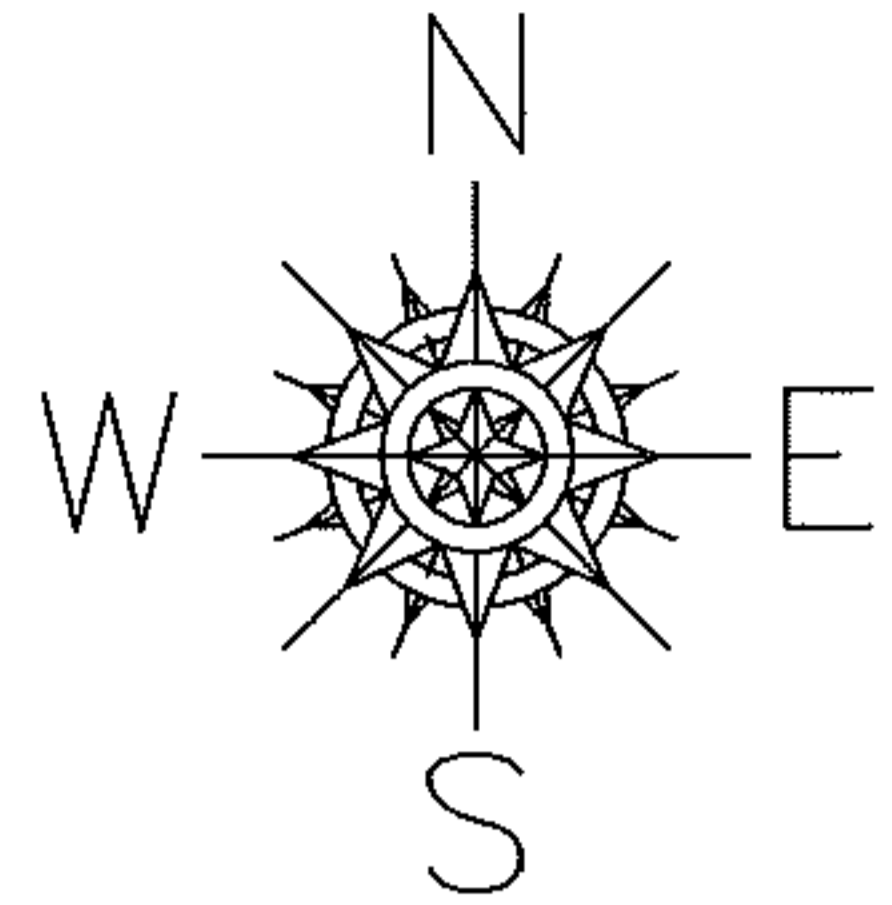


PARENT PARCEL: 03-00-075-112-003

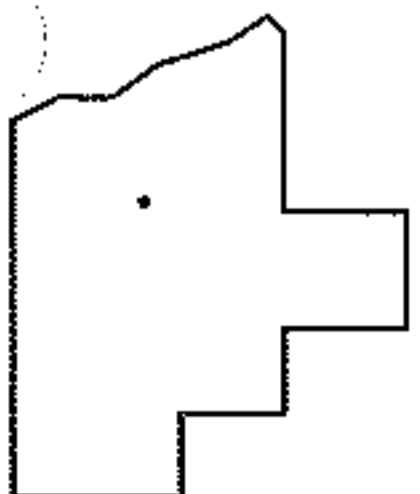
CHILD PARCEL: 03-00-075-112-026, -027

13-00425

STARTING POINT: AT A MON BOX AT THE INTERSECTION OF C/L S.R.254 AND C/L WEST RIVER RD.



LOR-254-0.01
30-WD2



SPLITS/DEEDS PROCESSED

LORAIN COUNTY TAX MAP DEPARTMENT
226 MIDDLE AVE. ELYRIA, OHIO

SURVEYED BY: RICHARD F. MATHIAS

CLOSURE: .01:10,000

MAP PAGE(S): 3-00-075-A

APPROVED BY: RRM DATE: 2-26-13

SCALE: 1"= 100 PRIOR INST.: 20020822994