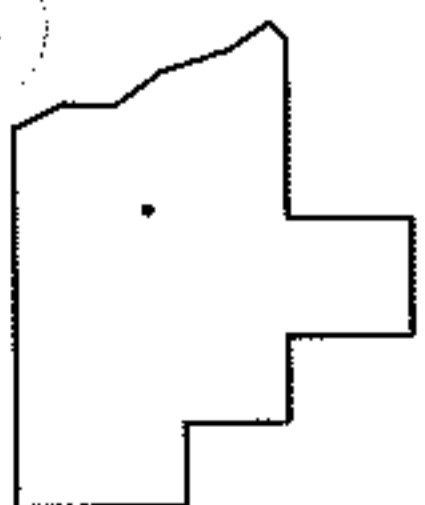
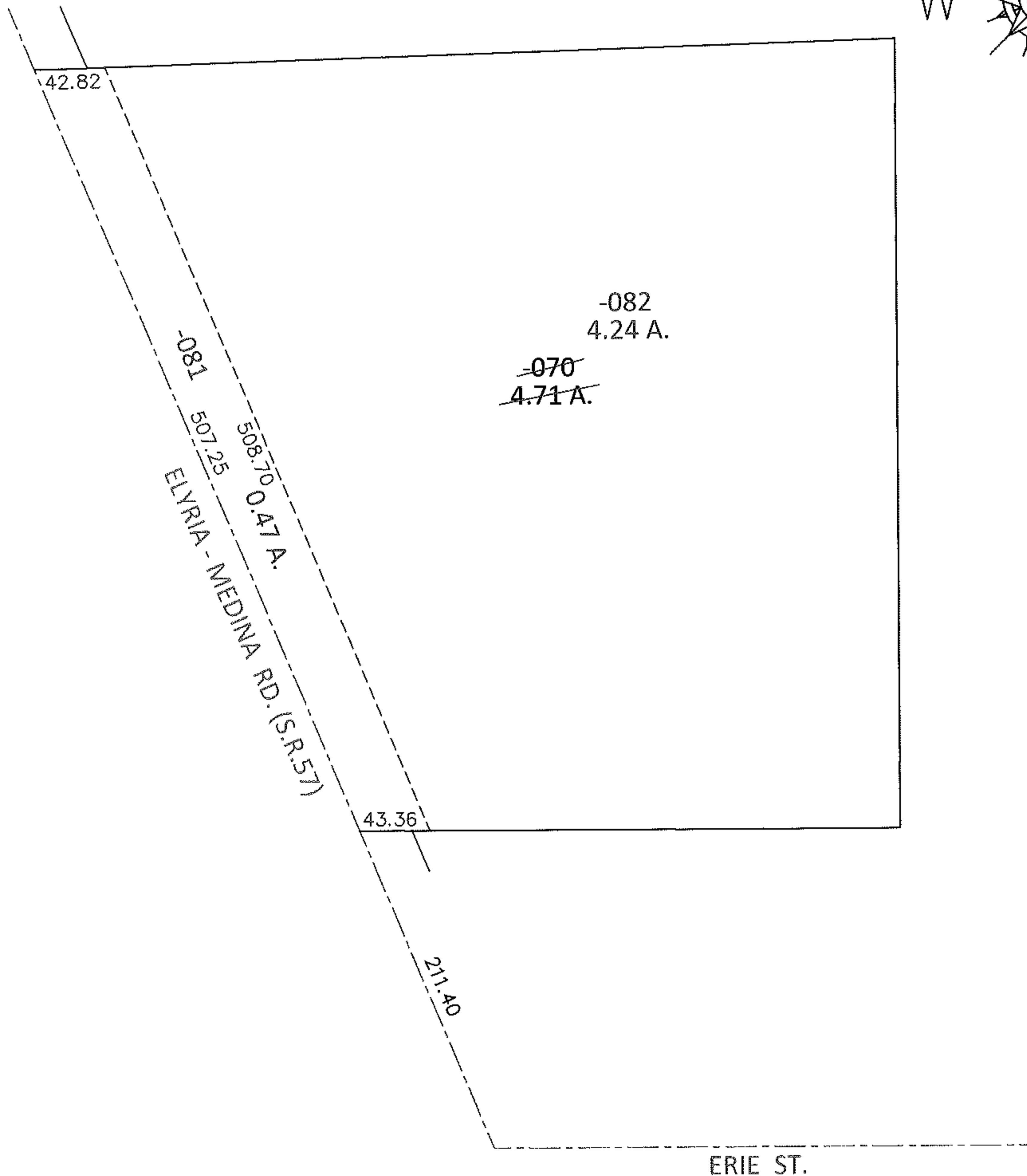
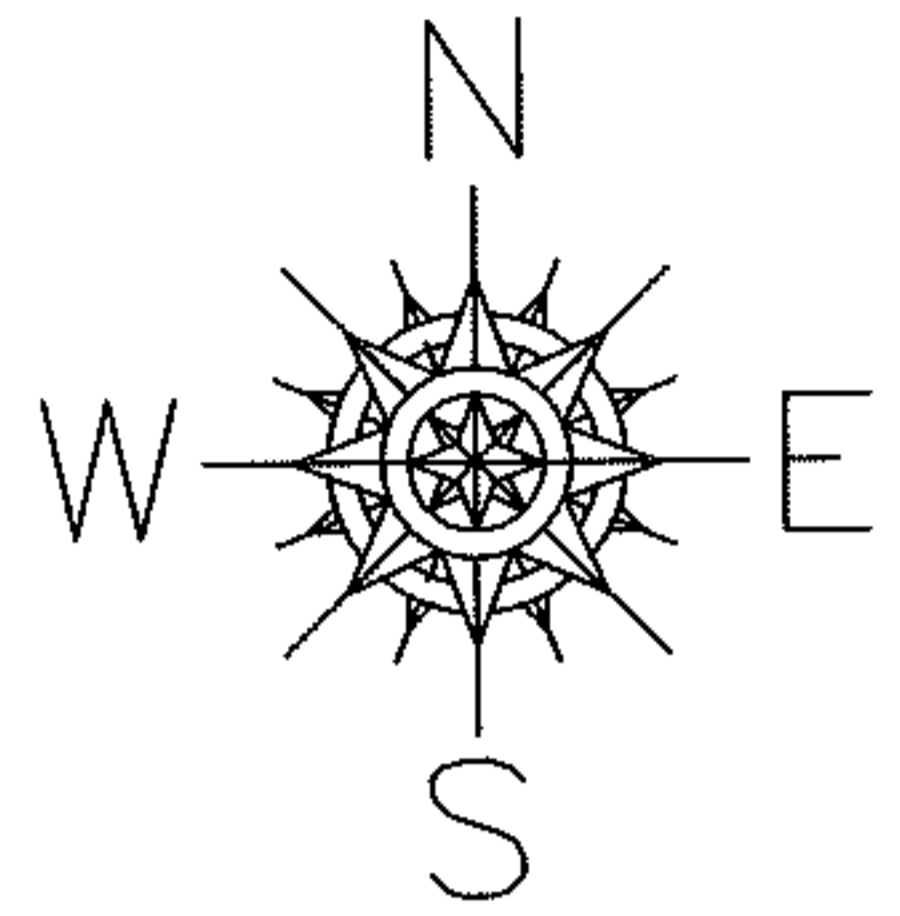


PARENT PARCEL: 11-00-100-102-070

CHILD PARCEL: 11-00-100-102-081, -082

STARTING POINT: INTERSECTION OF C/L OF S.R.57 AND C/L OF ERIE ST.

13-00420



SPLITS/DEEDS PROCESSED

LORAIN COUNTY TAX MAP DEPARTMENT
226 MIDDLE AVE. ELYRIA, OHIO

SURVEYED BY: KENNETH C. DEAN JR.

CLOSURE: .00:10,000

MAP PAGE(S): 11-00-100-B

APPROVED BY: RRM DATE: 2-5-13

SCALE: 1"=100 PRIOR INST.: OR 245/587