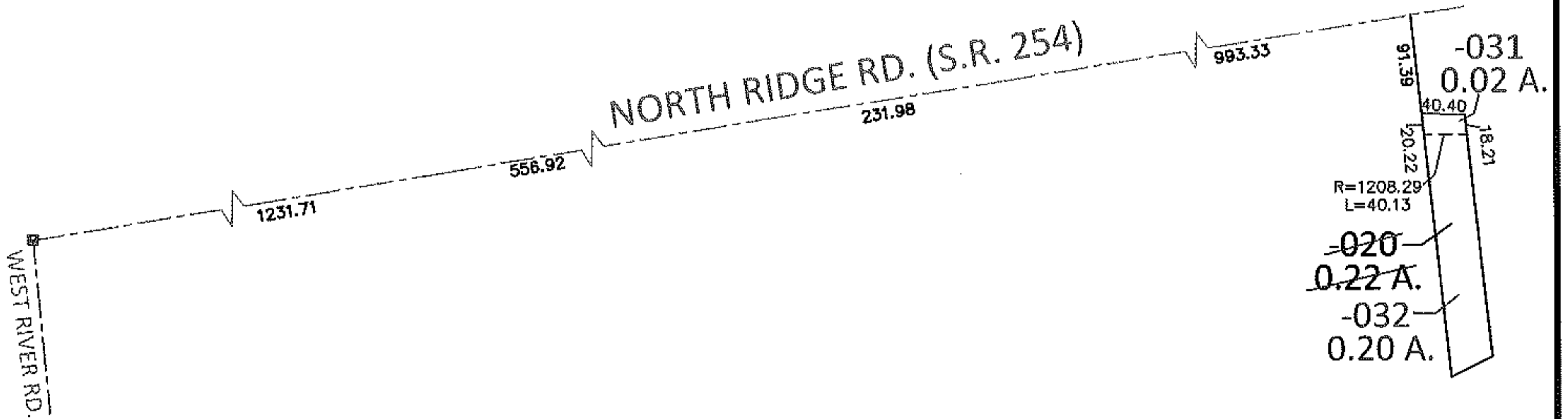
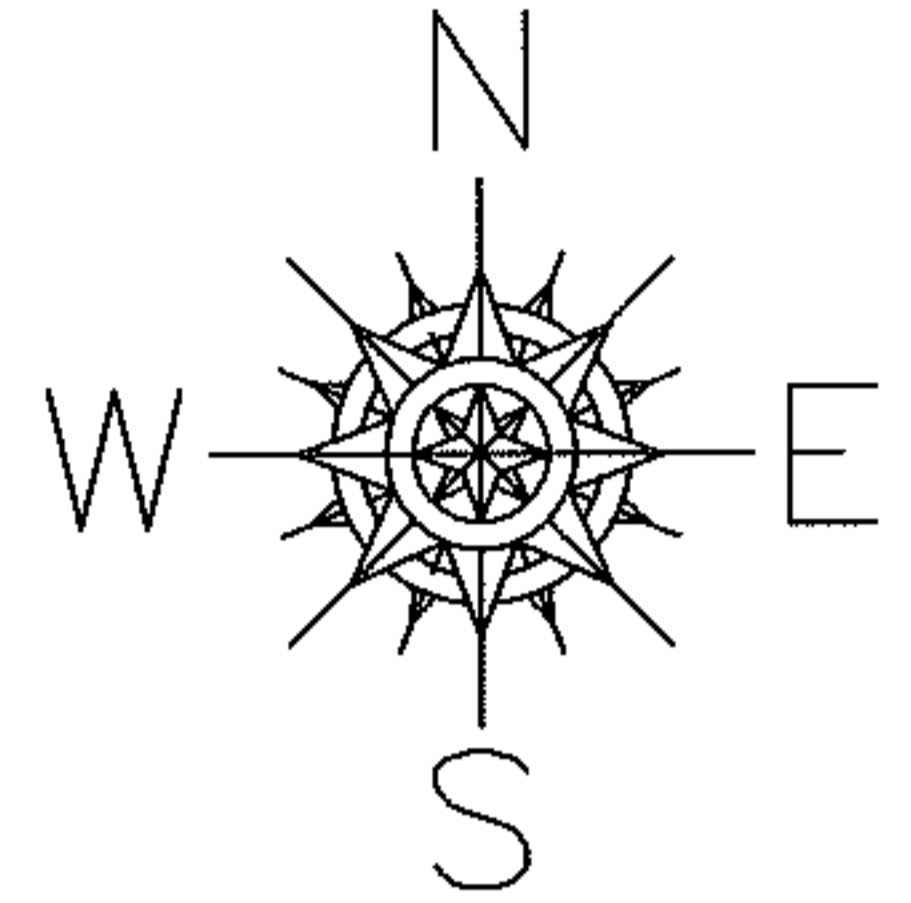


PARENT PARCEL: 03-00-075-115-020

CHILD PARCEL: 03-00-075-115-031, -032

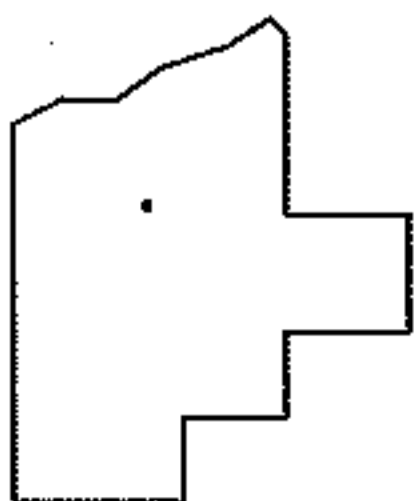
13-00415

STARTING POINT: AT A MON BOX AT THE INTERSECTION OF C/L OF S.R.254 AND C/L OF WEST RIVER RD.



LOR-254-0.01

52-WD1



SPLITS/DEEDS PROCESSED

LORAIN COUNTY TAX MAP DEPARTMENT  
226 MIDDLE AVE. ELYRIA, OHIO

SURVEYED BY: RICHARD F. MATHIAS

CLOSURE: .00:10,000

MAP PAGE(S): 3-00-075-C

APPROVED BY: RRM DATE: 2-25-13

SCALE: 1"= 200 PRIOR INST.: 20030916137