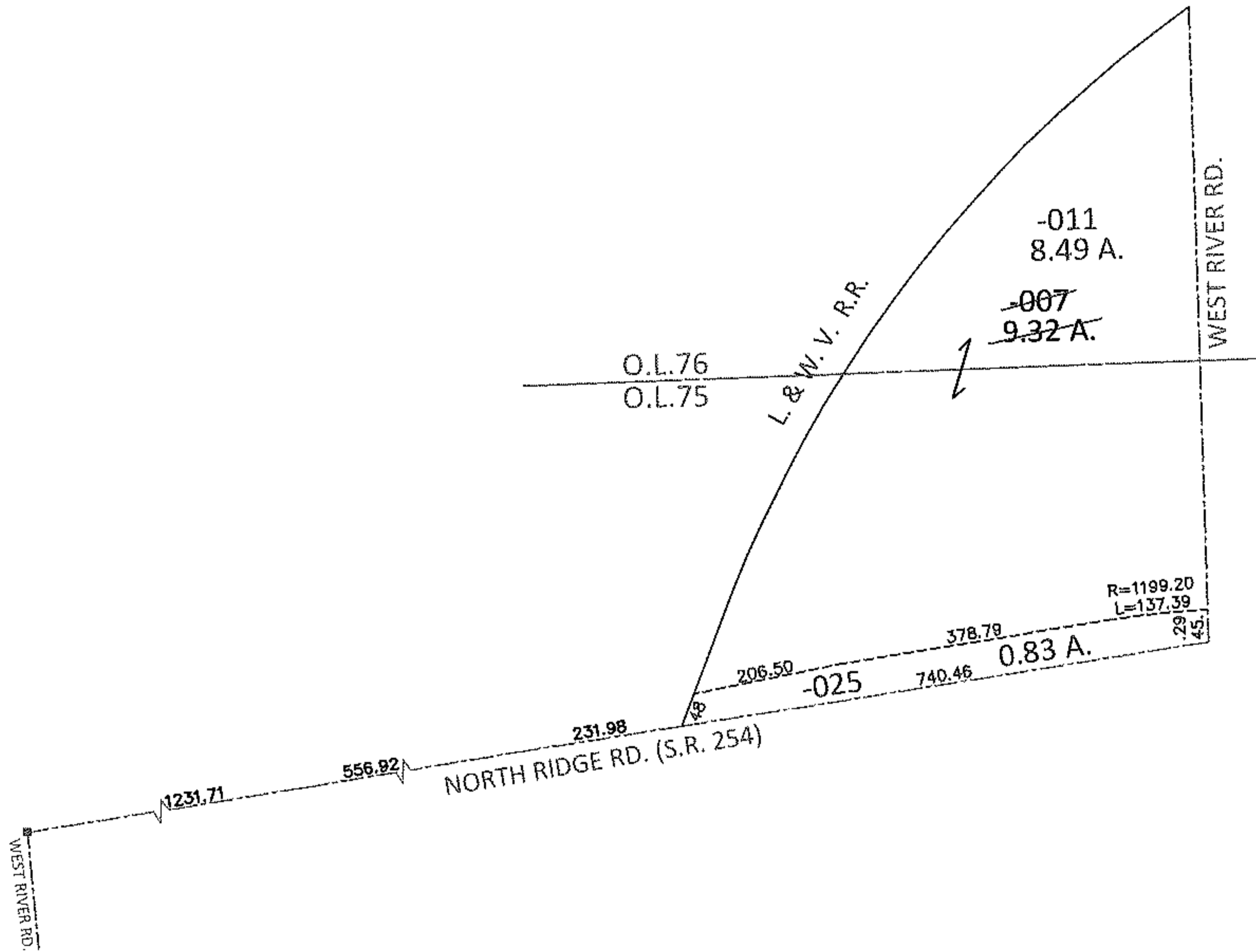
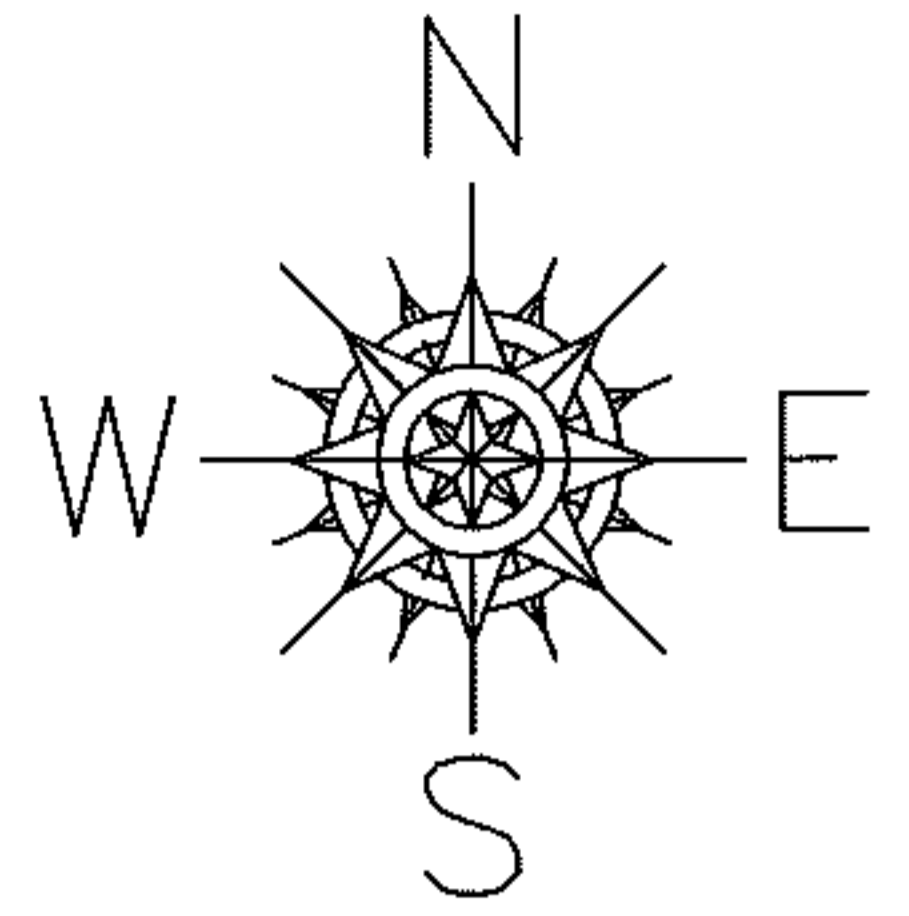


PARENT PARCEL: 03-00-076-112-007

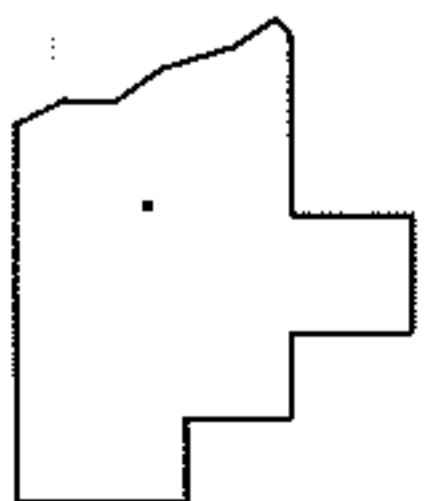
CHILD PARCEL: 03-00-075-112-025, 03-00-076-112-011

13-00412

STARTING POINT: AT A MON BOX AT THE INTERSECTION OF C/L OF S.R. 254 AND C/L OF WEST RIVER RD.



LOR-254-0.01
46-WD



SPLITS/DEEDS PROCESSED

LORAIN COUNTY TAX MAP DEPARTMENT
226 MIDDLE AVE. ELYRIA, OHIO

SURVEYED BY: RICHARD F. MATHIAS

CLOSURE: .01:10,000

MAP PAGE(S): 3-00-075-B

APPROVED BY: RRM DATE: 2-25-13

SCALE: 1"= 300 PRIOR INST.: 20020806465