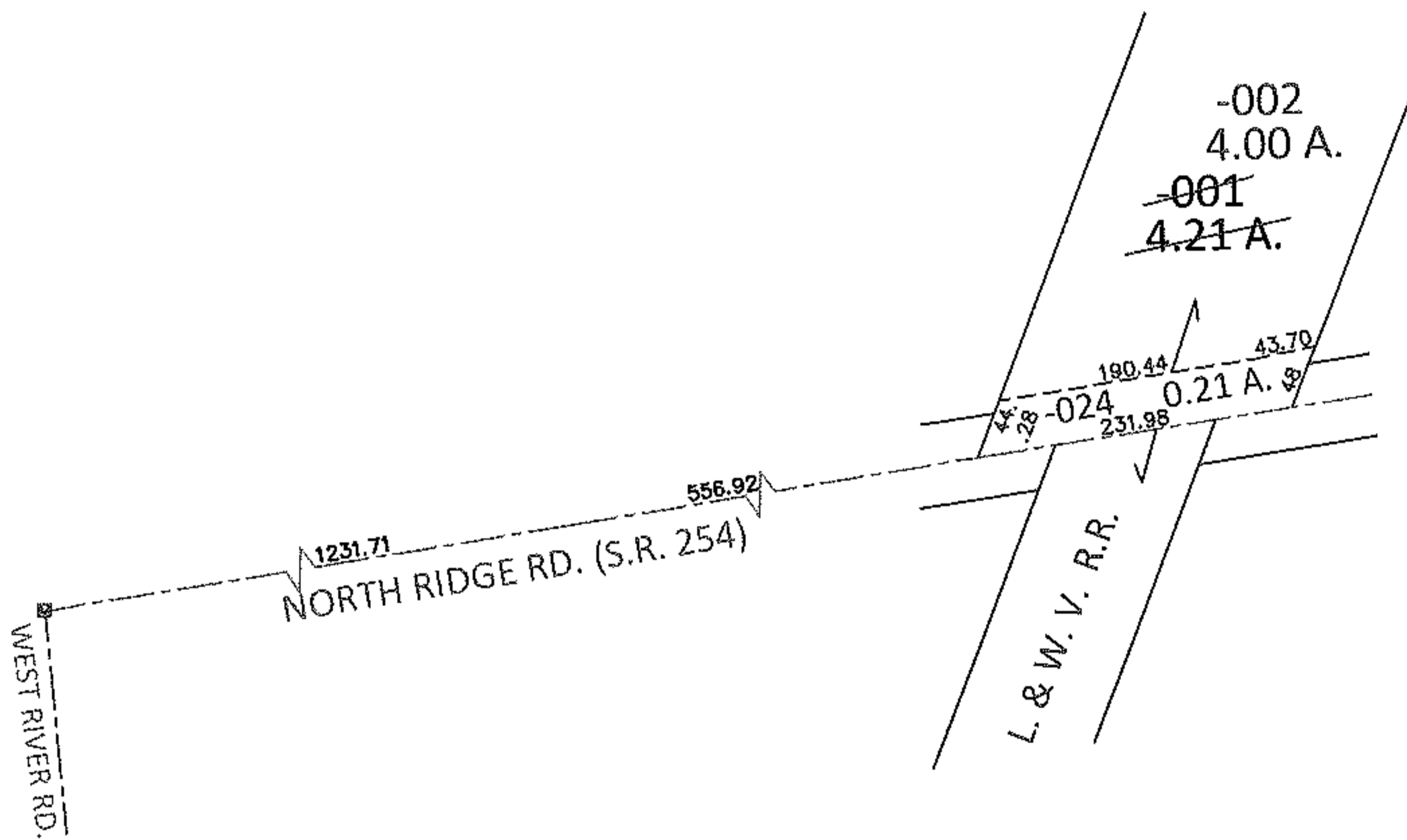
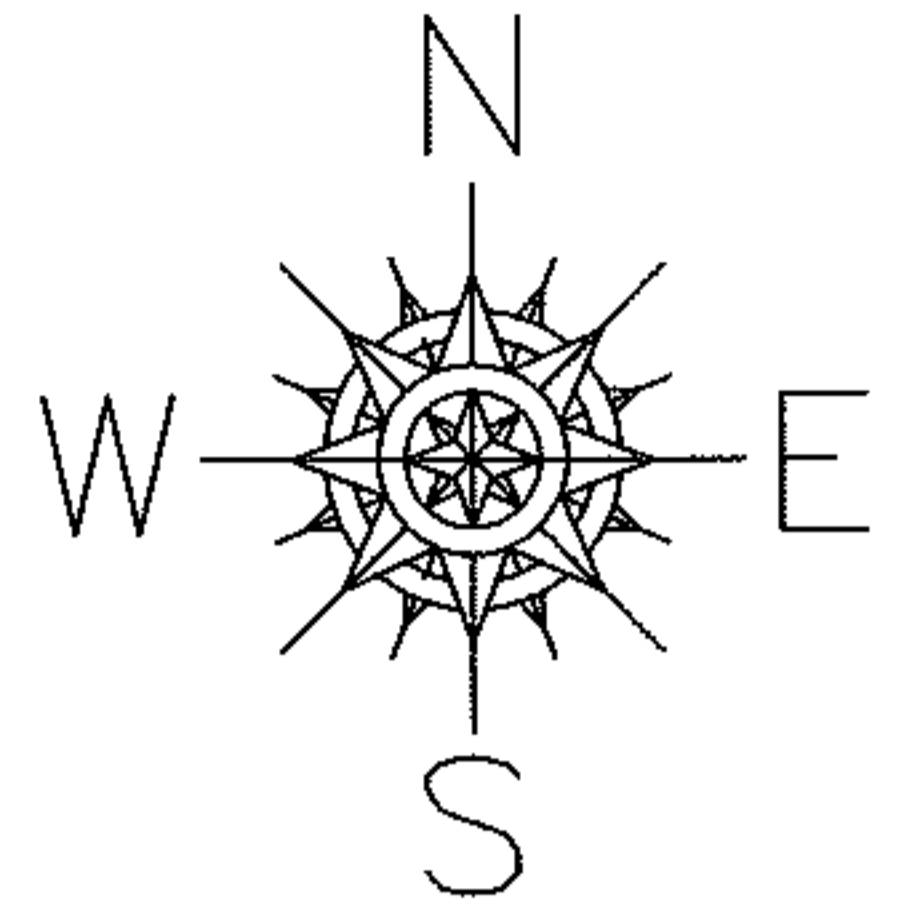


PARENT PARCEL: 03-00-075-500-001

CHILD PARCEL: 03-00-075-112-024, 03-00-075-500-002

13-00411

STARTING POINT: AT A MON BOX AT THE INTERSECTION OF C/L OF S.R.254 AND C/L OF WEST RIVER RD.



LOR-254-0.01

44-WD

SPLITS/DEEDS PROCESSED

LORAIN COUNTY TAX MAP DEPARTMENT  
226 MIDDLE AVE. ELYRIA, OHIO

SURVEYED BY: RICHARD F. MATHIAS

CLOSURE: .01:10,000

MAP PAGE(S): 3-00-075-B

APPROVED BY: RRM DATE: 2-25-13

SCALE: 1" = 200 PRIOR INST.: N/A

