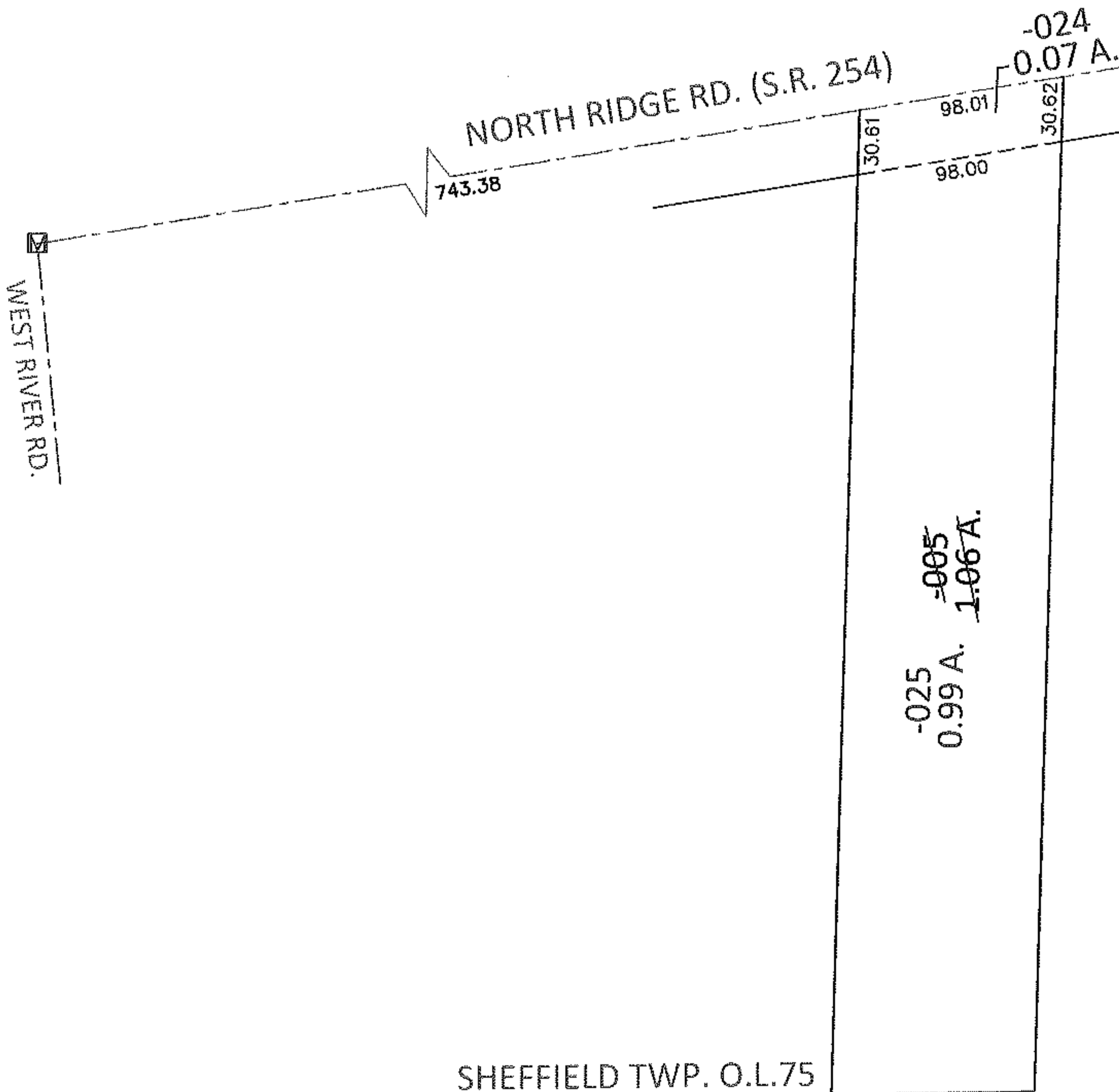
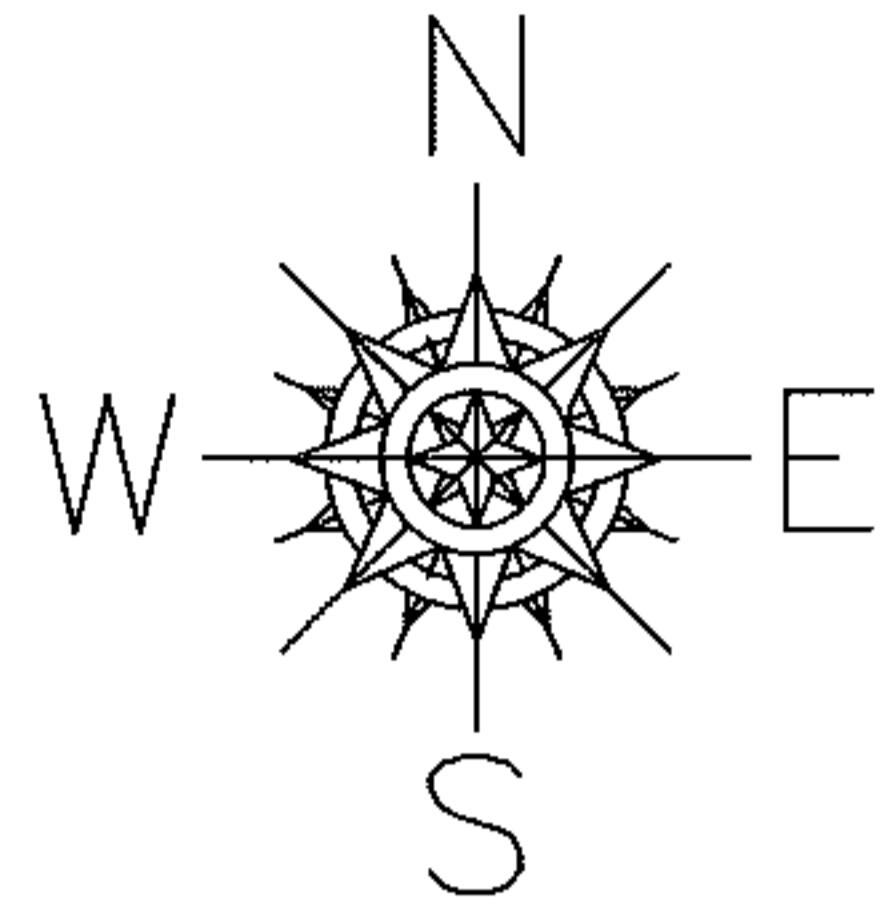


PARENT PARCEL: 03-00-075-113-005

CHILD PARCEL: 03-00-075-113-024, -025

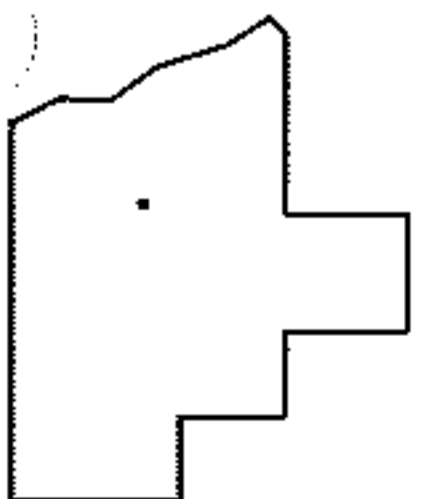
13-00407

STARTING POINT: AT A MON BOX AT THE INTERSECTION OF C/L S.R.254 AND C/L WEST RIVER RD.



SHEFFIELD TWP. O.L.75  
ELYRIA TWP. TR.22 O.L.12

LOR-254-0.01  
35-WD



SPLITS/DEEDS PROCESSED

LORAIN COUNTY TAX MAP DEPARTMENT  
226 MIDDLE AVE. ELYRIA, OHIO

SURVEYED BY: RICHARD F. MATHIAS

CLOSURE: .01:10,000

MAP PAGE(S): 3-00-075-A

APPROVED BY: RRM DATE: 2-25-13

SCALE: 1"= 100 PRIOR INST.: 20020878946