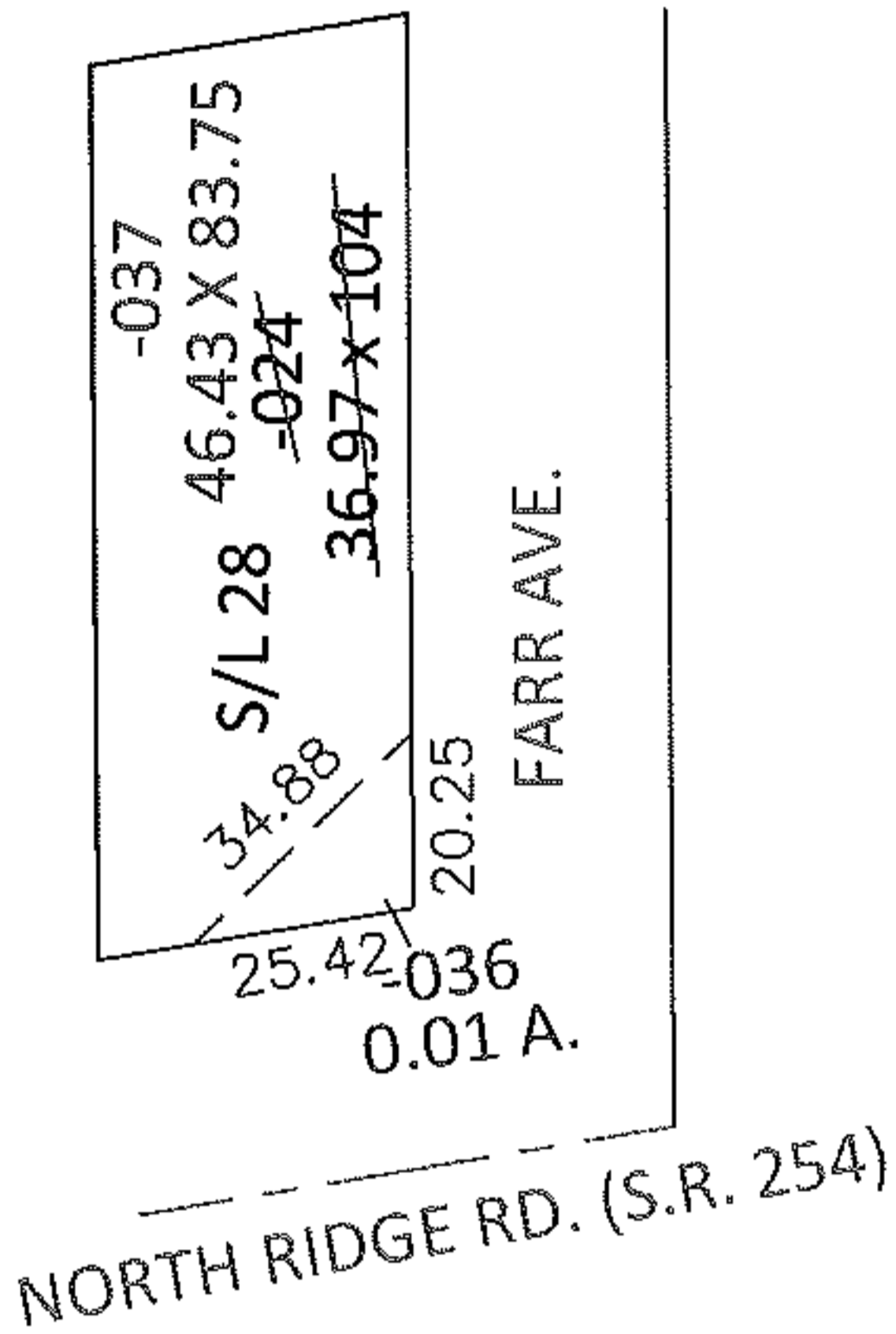
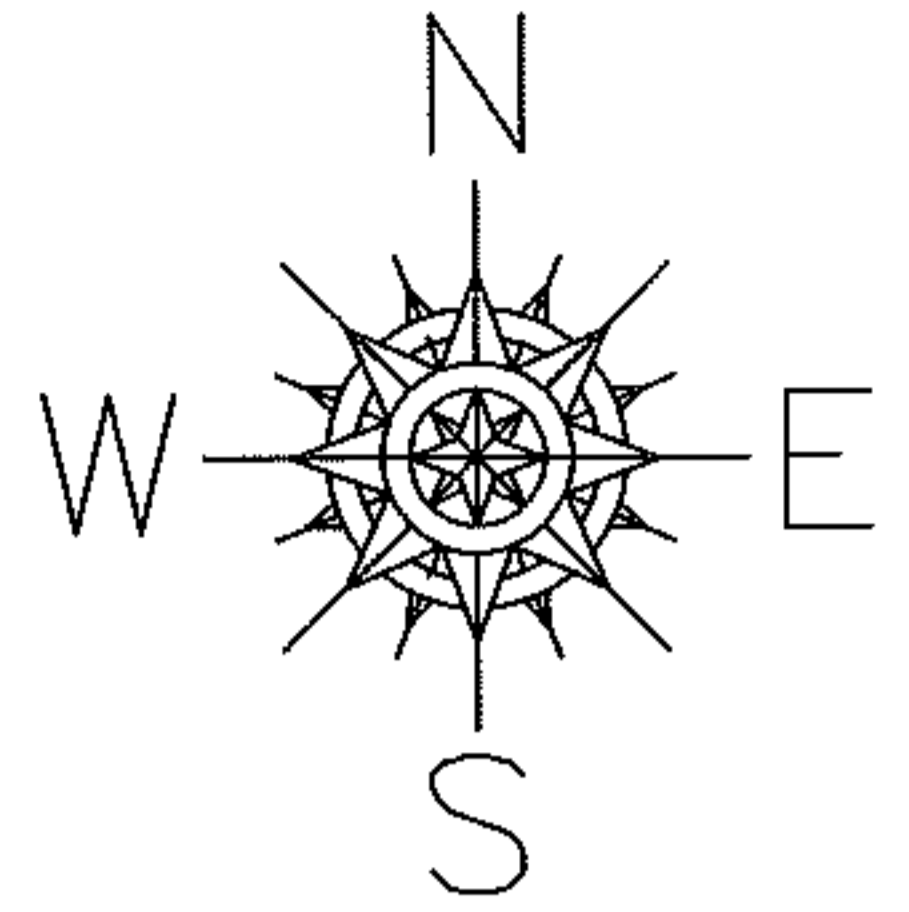


PARENT PARCEL: 03-00-075-110-024

CHILD PARCEL: 03-00-075-110-036, -037

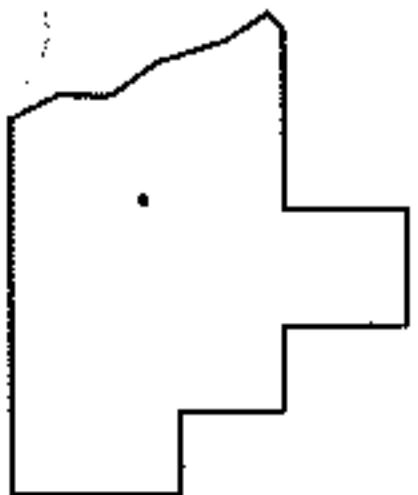
13-00399

STARTING POINT: SOUTHEAST CORNER OF S/L 28 IN LIBERTY SUB. (VOL.9 PG.26)



LOR-254-0.01

28-WD



SPLITS/DEEDS PROCESSED

LORAIN COUNTY TAX MAP DEPARTMENT
226 MIDDLE AVE. ELYRIA, OHIO

SURVEYED BY: RICHARD F. MATHIAS

CLOSURE: .00:10,000

MAP PAGE(S): 3-00-075-A

APPROVED BY: RRM DATE: 2-22-13

SCALE: 1"= 50' PRIOR INST.: OR 209/373