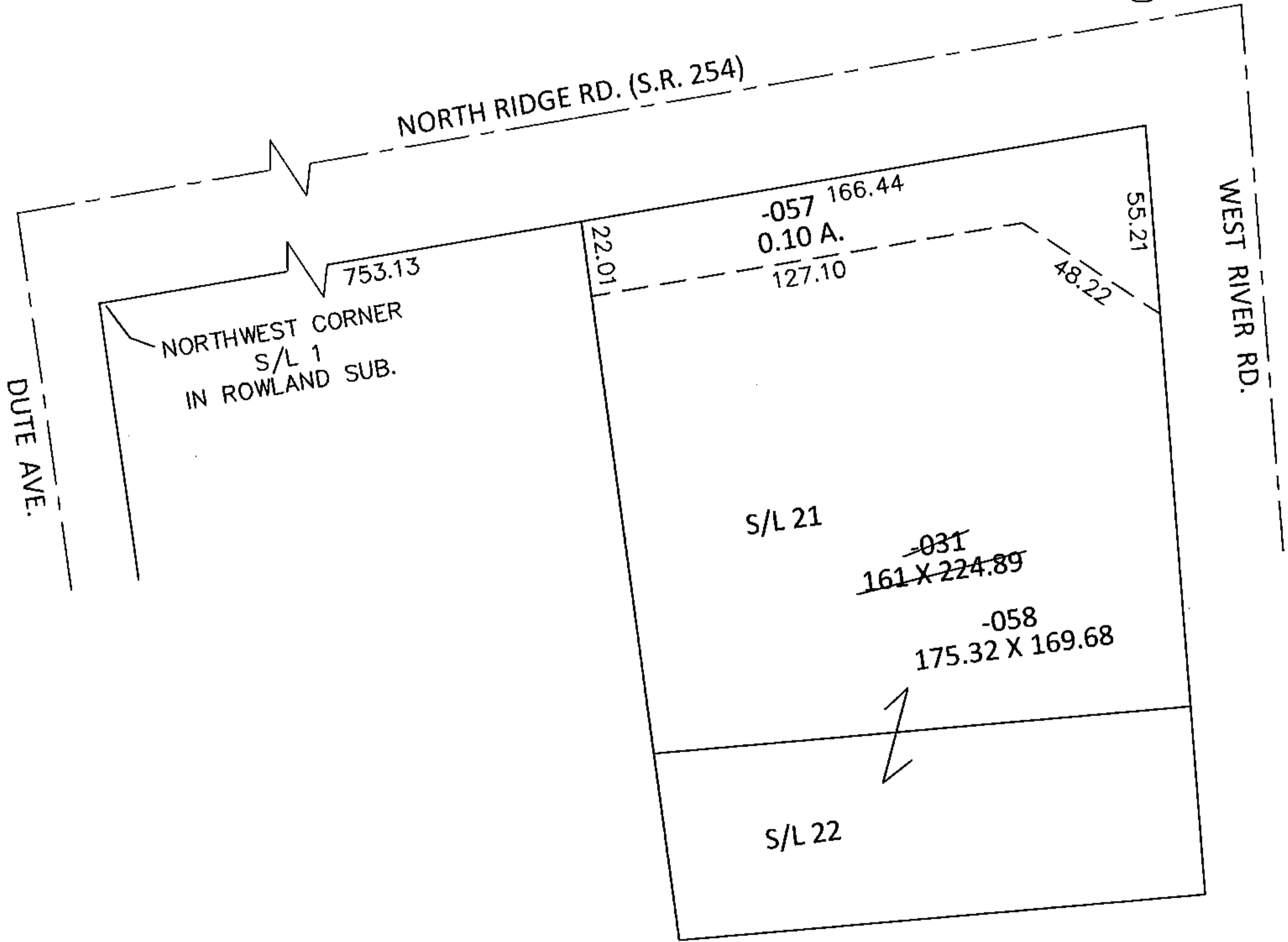
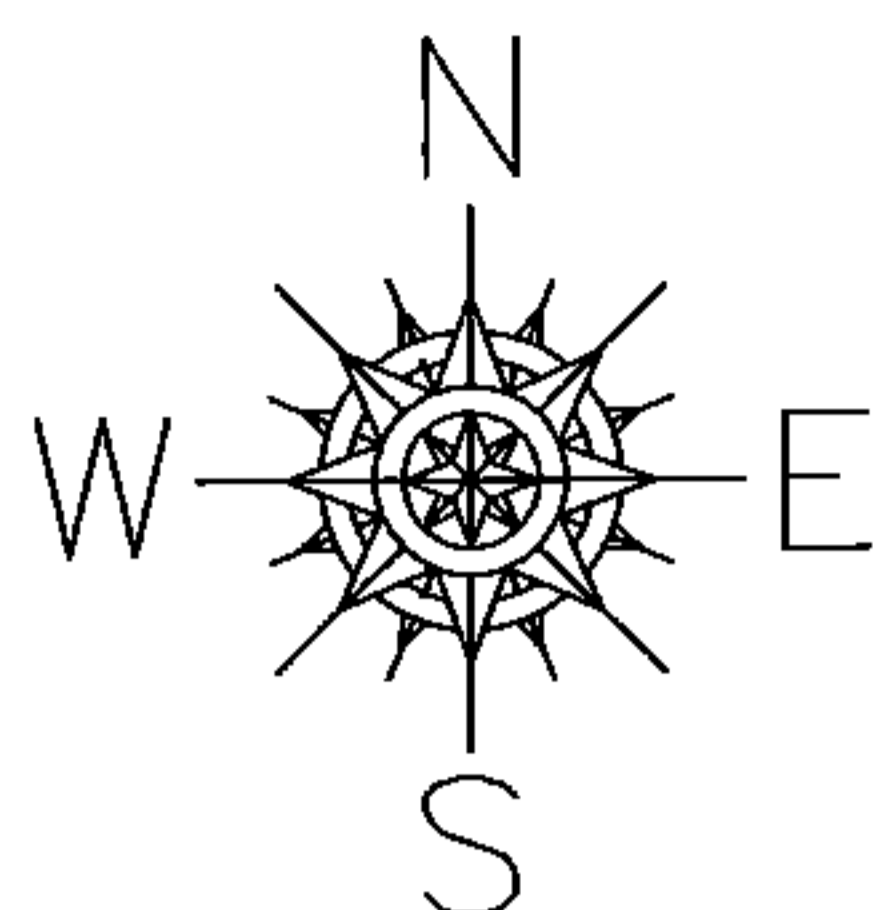
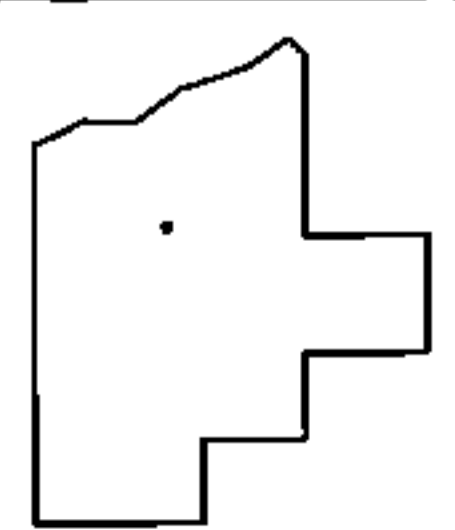


PARENT PARCEL: 03-00-075-111-031  
CHILD PARCEL: 03-00-075-111-057, -058  
STARTING POINT: NORTHWEST CORNER OF S/L 1 IN ROWLAND SUB. (VOL.97 PG.74)

**13-00395**



LOR-254-0.01  
22-WD



**SPLITS/DEEDS PROCESSED**  
LORAIN COUNTY TAX MAP DEPARTMENT  
226 MIDDLE AVE. ELYRIA, OHIO

SURVEYED BY: RICHARD F. MATHIAS  
CLOSURE: .00:10.000  
MAP PAGE(S): 3-00-075-A  
APPROVED BY: RRM DATE: 2-21-13  
SCALE: 1"= 50' PRIOR INST.: 20000665541