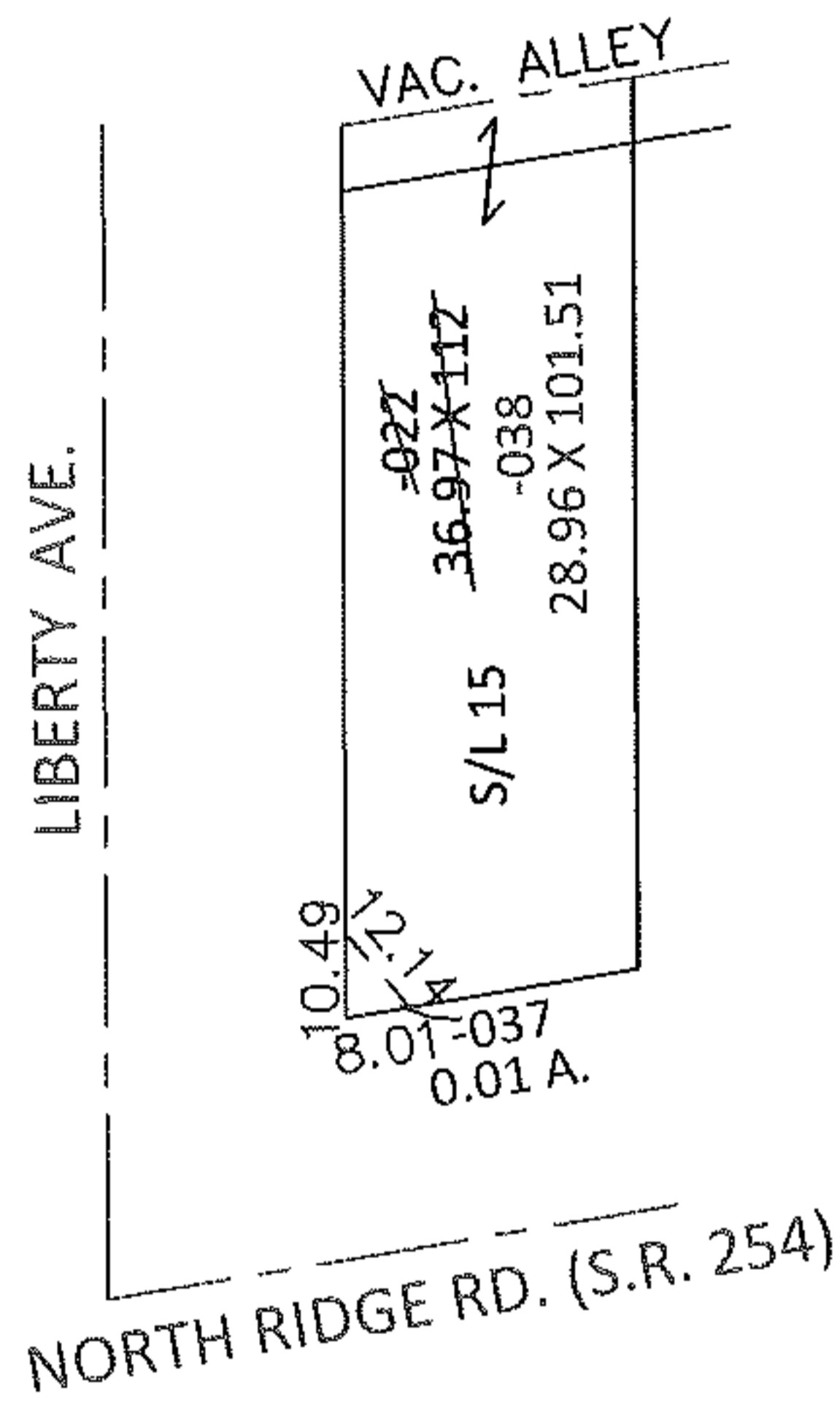
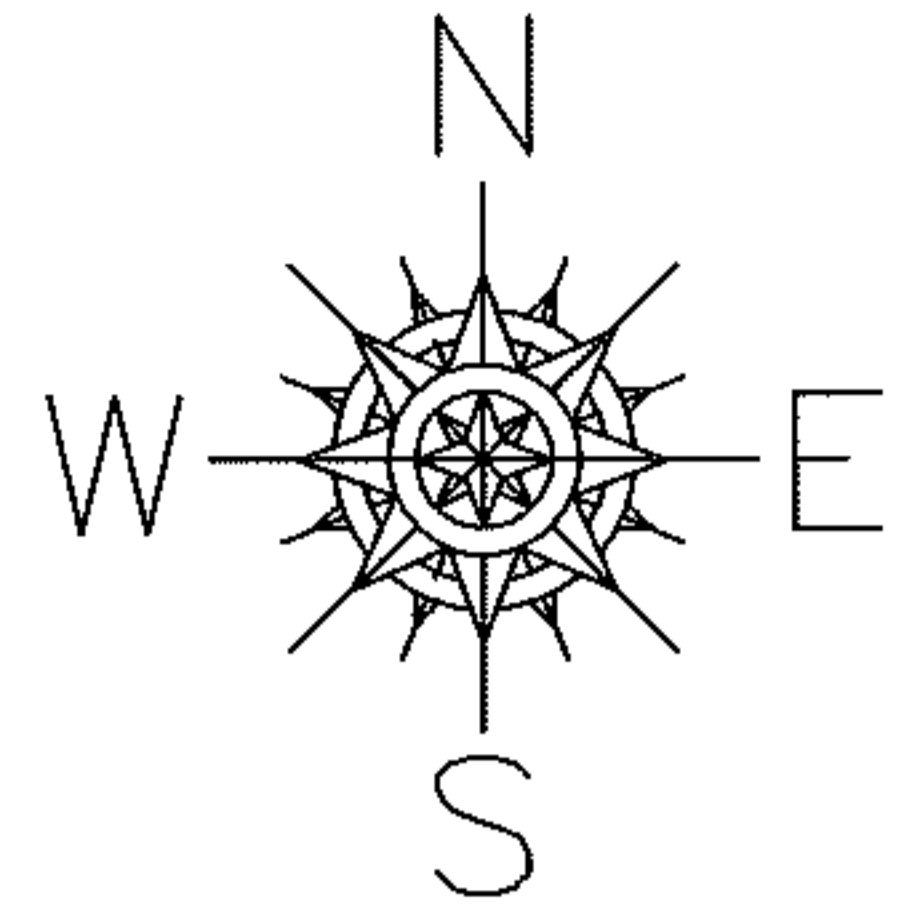


PARENT PARCEL: 03-00-075-109-022

CHILD PARCEL: 03-00-075-109-037, -038

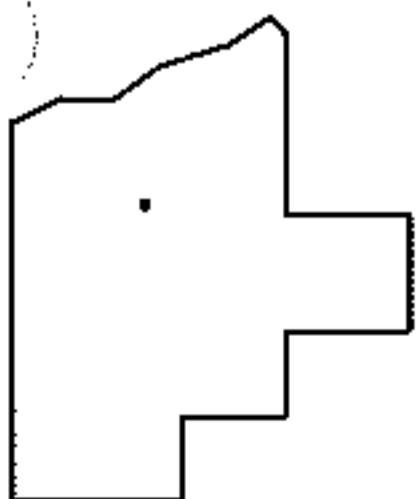
STARTING POINT: SOUTHWEST CORNER OF S/L 15 IN LIBERTY SUB. (VOL. 9 PG.26)

13-00394



LOR-254-0.01

20-WD



SPLITS/DEEDS PROCESSED

LORAIN COUNTY TAX MAP DEPARTMENT
226 MIDDLE AVE. ELYRIA, OHIO

SURVEYED BY: RICHARD F. MATHIAS

CLOSURE: .00:10,000

MAP PAGE(S): 3-00-075-A

APPROVED BY: RRM DATE: 2-21-13

SCALE: 1" = 50' PRIOR INST.: 19980536652