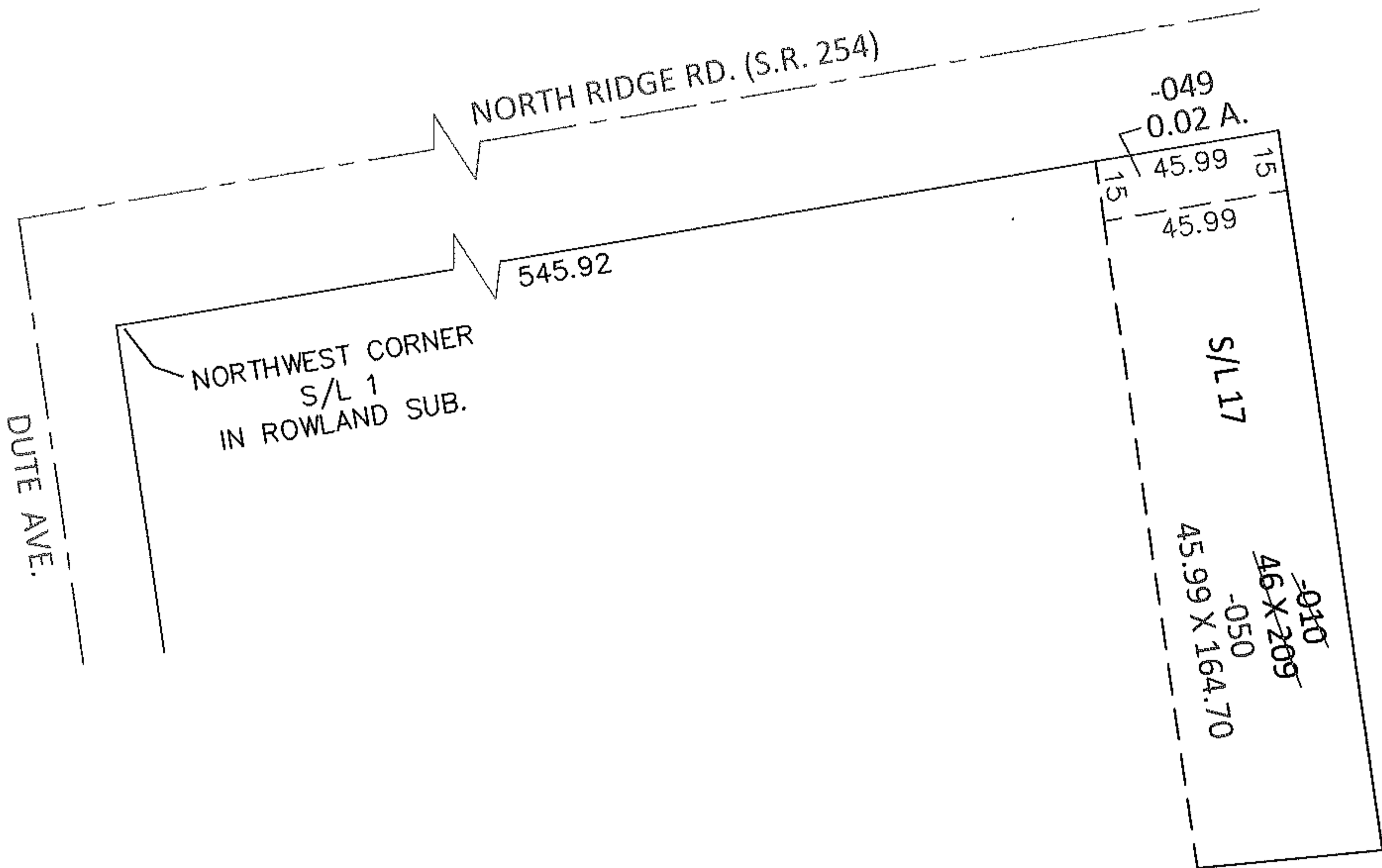
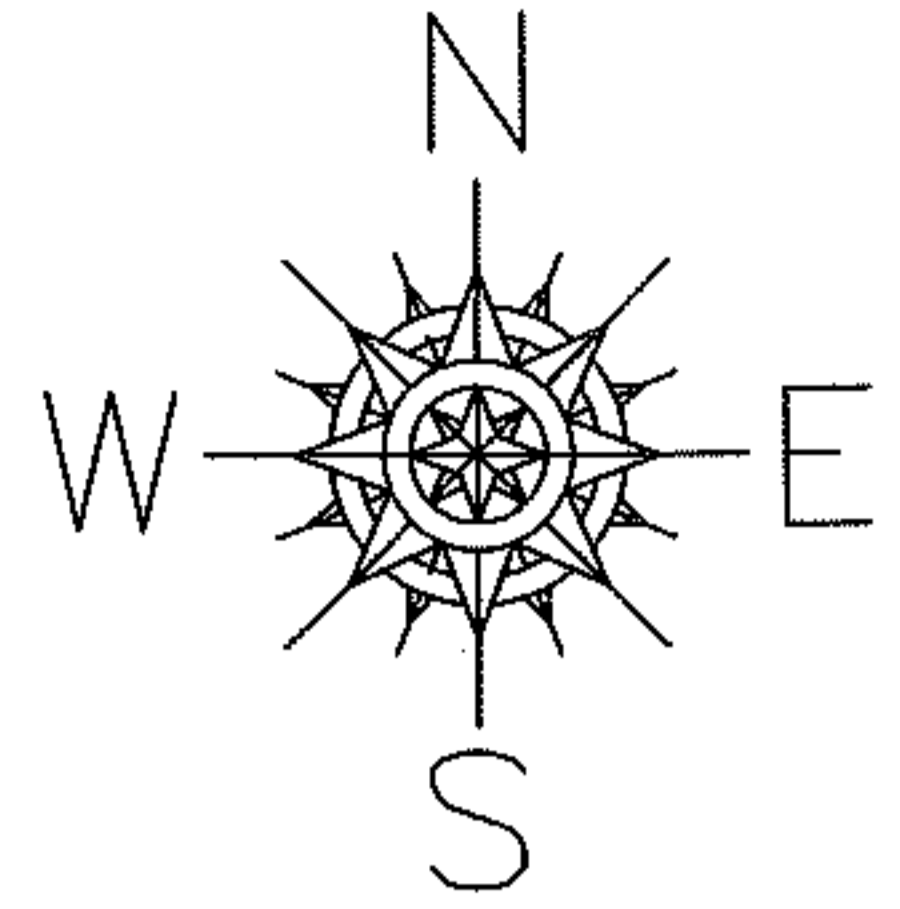


PARENT PARCEL: 03-00-075-111-010

CHILD PARCEL: 03-00-075-111-049, -050

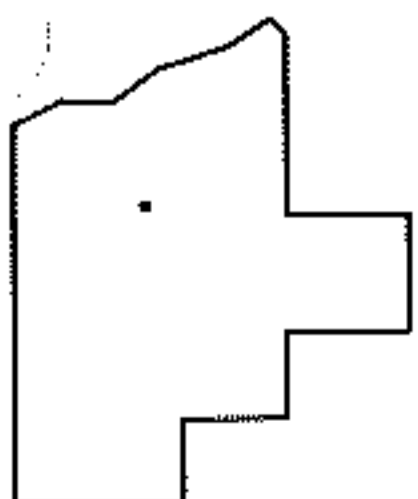
STARTING POINT: NORTHWEST CORNER OF S/L 1 IN ROWLAND SUB. (VOL.97 PG.74)

13-00390



LOR-254-0.01

18-WD1



SPLITS/DEEDS PROCESSED

LORAIN COUNTY TAX MAP DEPARTMENT  
226 MIDDLE AVE. ELYRIA, OHIO

SURVEYED BY: RICHARD F. MATHIAS

CLOSURE: .00:10,000

MAP PAGE(S): 3-00-075-A

APPROVED BY: RRM DATE: 2-21-13

SCALE: 1" = 50' PRIOR INST.: 19980512628