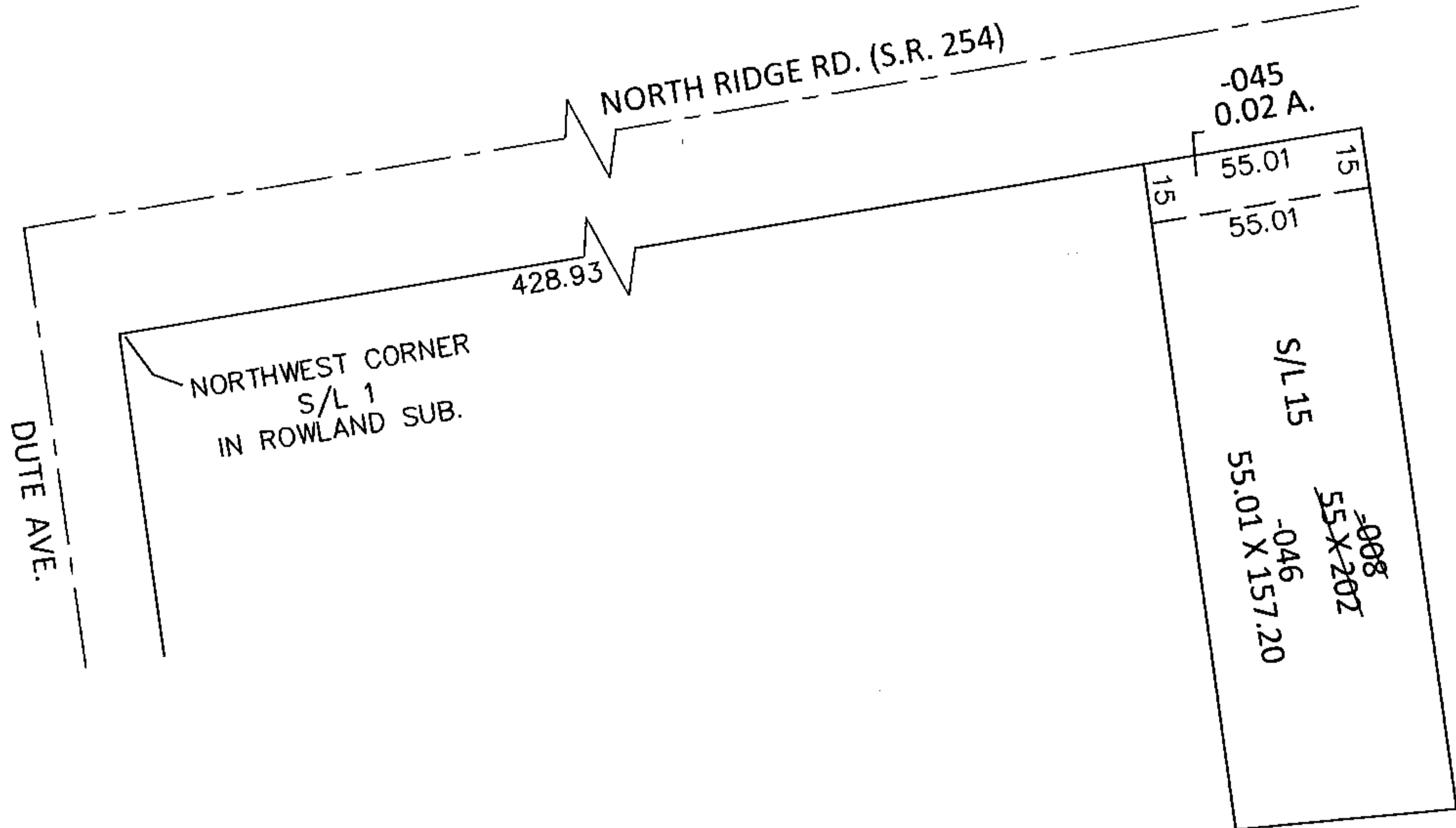
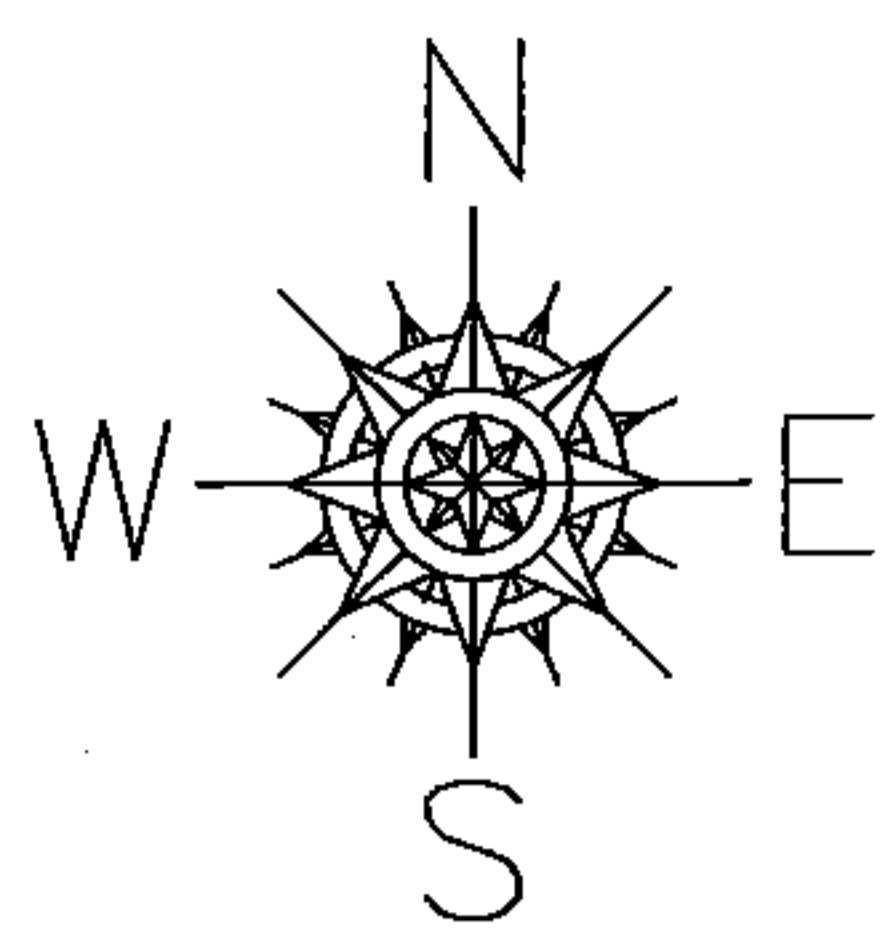
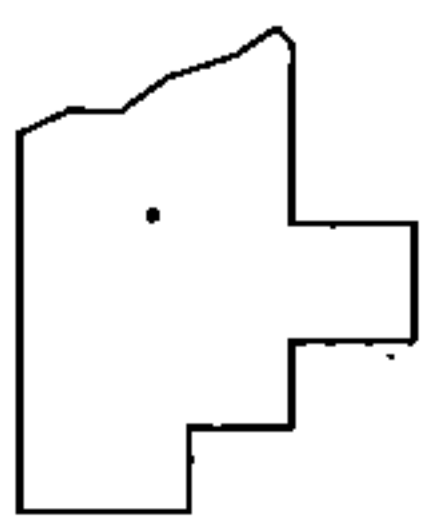


PARENT PARCEL: 03-00-075-111-008
CHILD PARCEL: 03-00-075-111-045, -046
STARTING POINT: NORTHWEST CORNER OF S/L 1 IN ROWLAND SUB. (VOL.97 PG.74)

13-00388



LOR-254-0.01
15-WD1



SPLITS/DEEDS PROCESSED
LORAIN COUNTY TAX MAP DEPARTMENT
226 MIDDLE AVE. ELYRIA, OHIO

SURVEYED BY: RICHARD F. MATHIAS
CLOSURE: .00:10,000
MAP PAGE(S): 3-00-075-A
APPROVED BY: RRM DATE: 2-20-13
SCALE: 1"= 50' PRIOR INST.: 20060140777