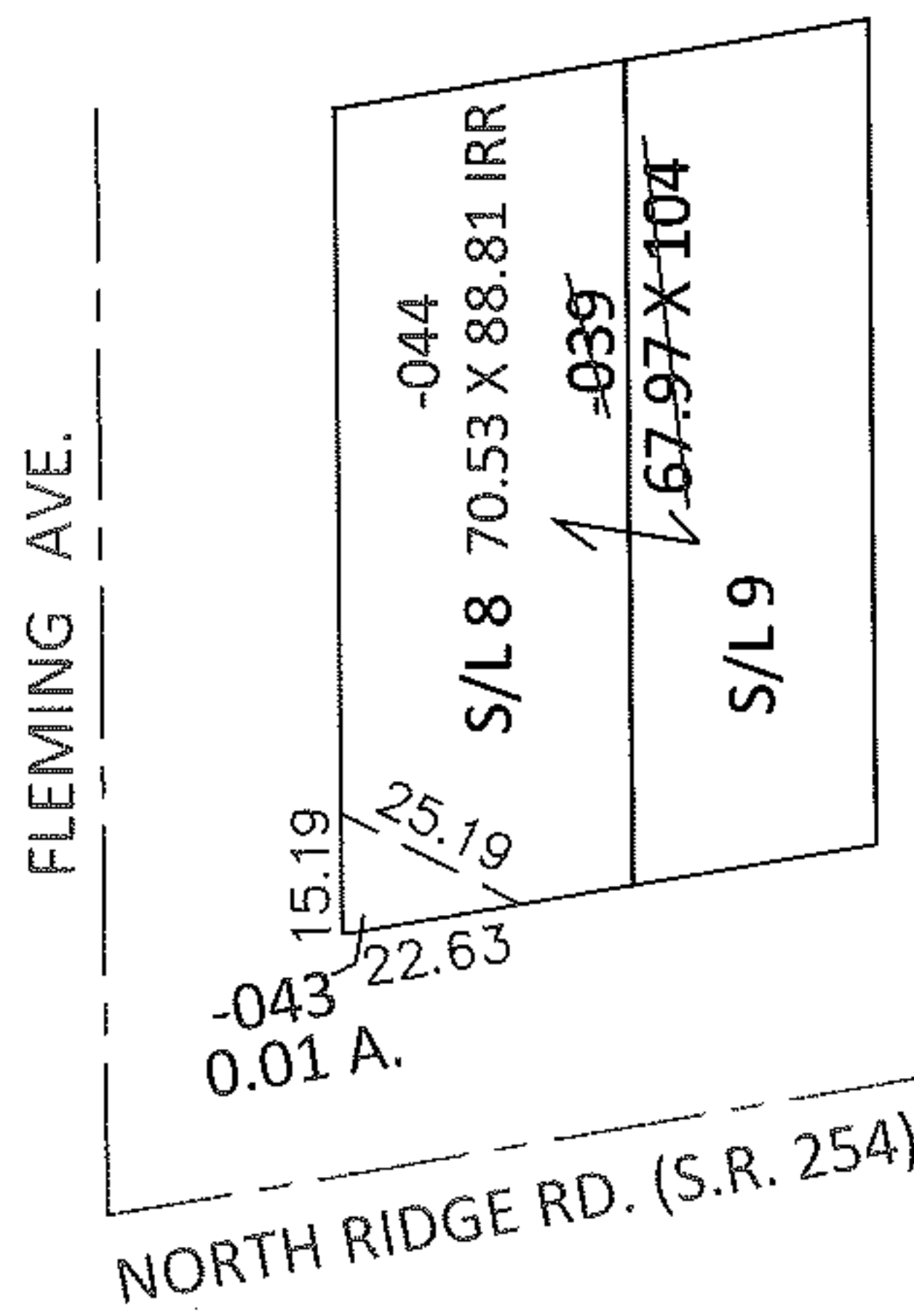
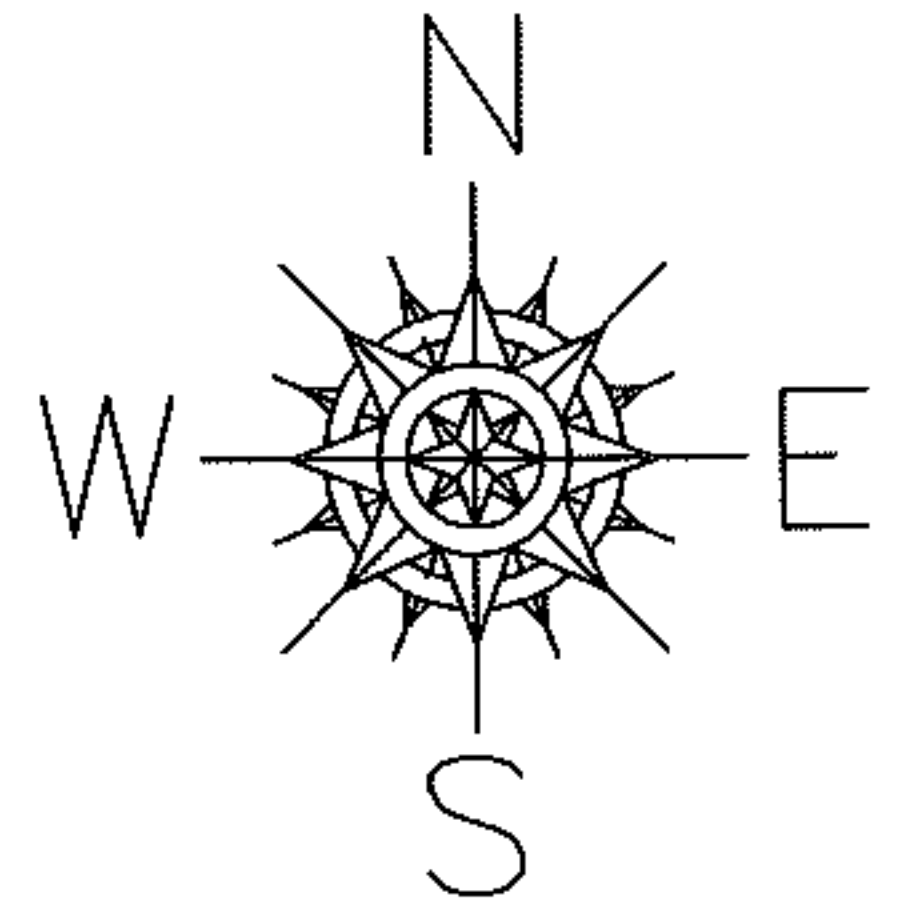


PARENT PARCEL: 03-00-075-108-039

CHILD PARCEL: 03-00-075-108-043, -044

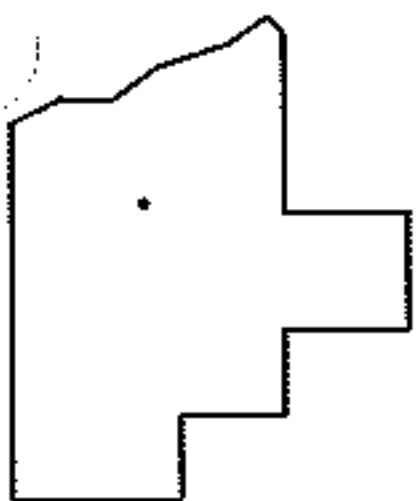
STARTING POINT: SOUTHWEST CORNER OF S/L 8 IN LIBERTY SUB. (VOL.9 PG.26)

13-00387



LOR-254-0.01

14-WD



SPLITS/DEEDS PROCESSED

LORAIN COUNTY TAX MAP DEPARTMENT
226 MIDDLE AVE. ELYRIA, OHIO

SURVEYED BY: RICHARD F. MATHIAS

CLOSURE: .00:10,000

MAP PAGE(S): 3-00-075-A

APPROVED BY: RRM DATE: 2-20-13

SCALE: 1"= 50' PRIOR INST.: 20110389243