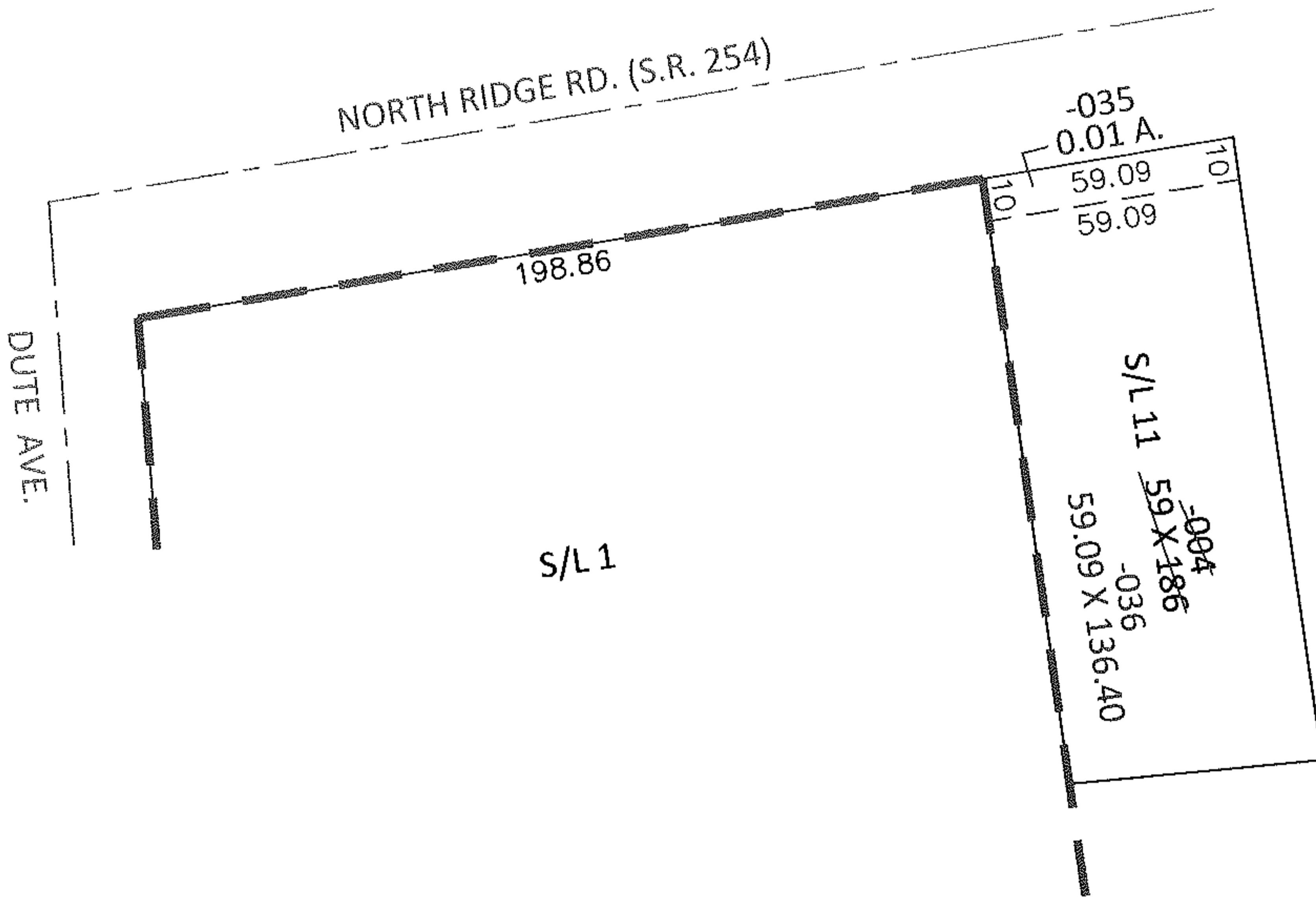
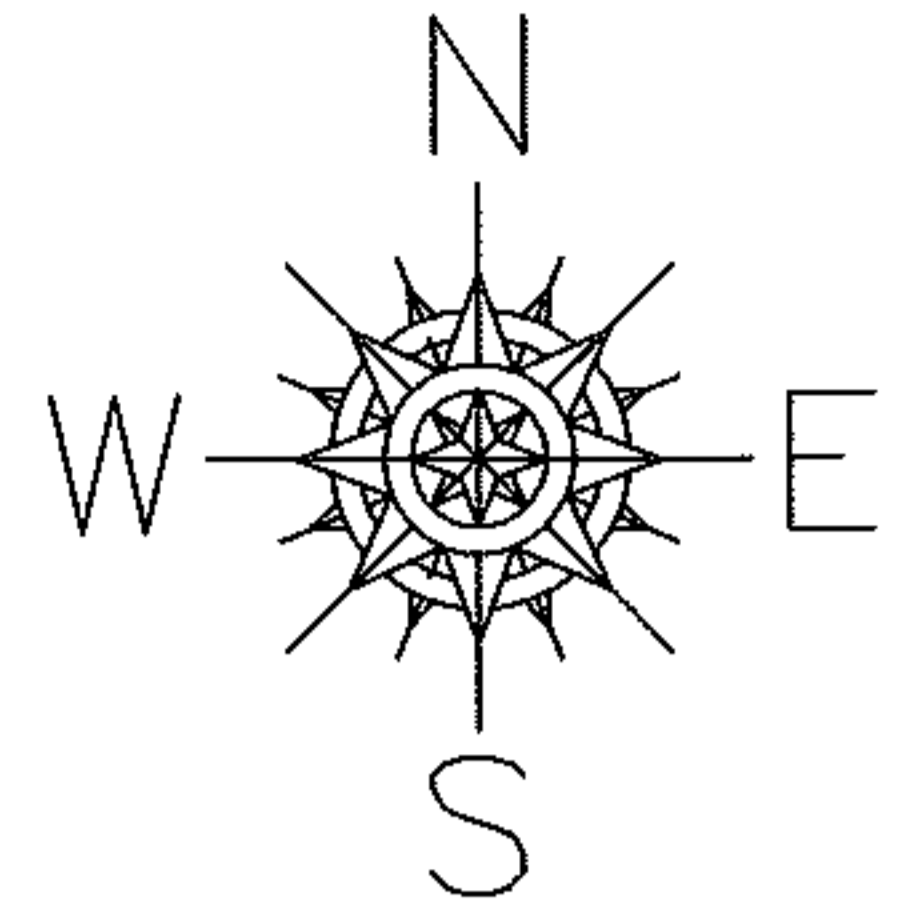


PARENT PARCEL: 03-00-075-111-004

CHILD PARCEL: 03-00-075-111-035, -036

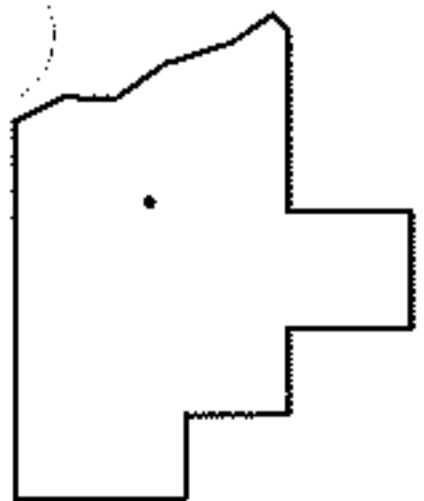
STARTING POINT: NORTHWEST CORNER OF S/L 1 IN ROWLAND SUB. (VOL.97 PG.74)

13-00383



LOR-254-0.01

12-WD



SPLITS/DEEDS PROCESSED

LORAIN COUNTY TAX MAP DEPARTMENT  
226 MIDDLE AVE. ELYRIA, OHIO

SURVEYED BY: RICHARD F. MATHIAS

CLOSURE: .00:10,000

MAP PAGE(S): 3-00-075-A

APPROVED BY: RRM DATE: 2-19-13

SCALE: 1"= 50' PRIOR INST.: 20000719559