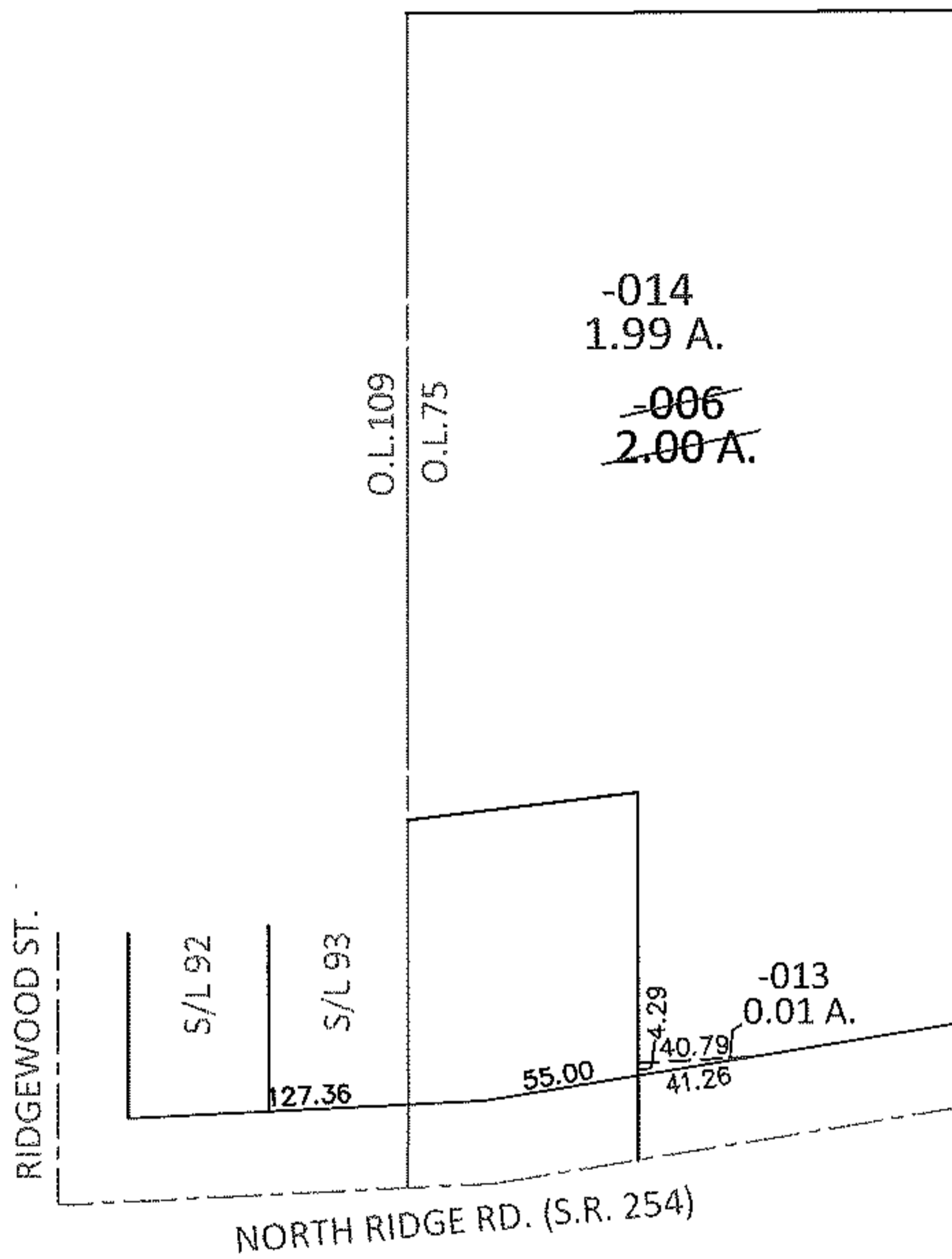
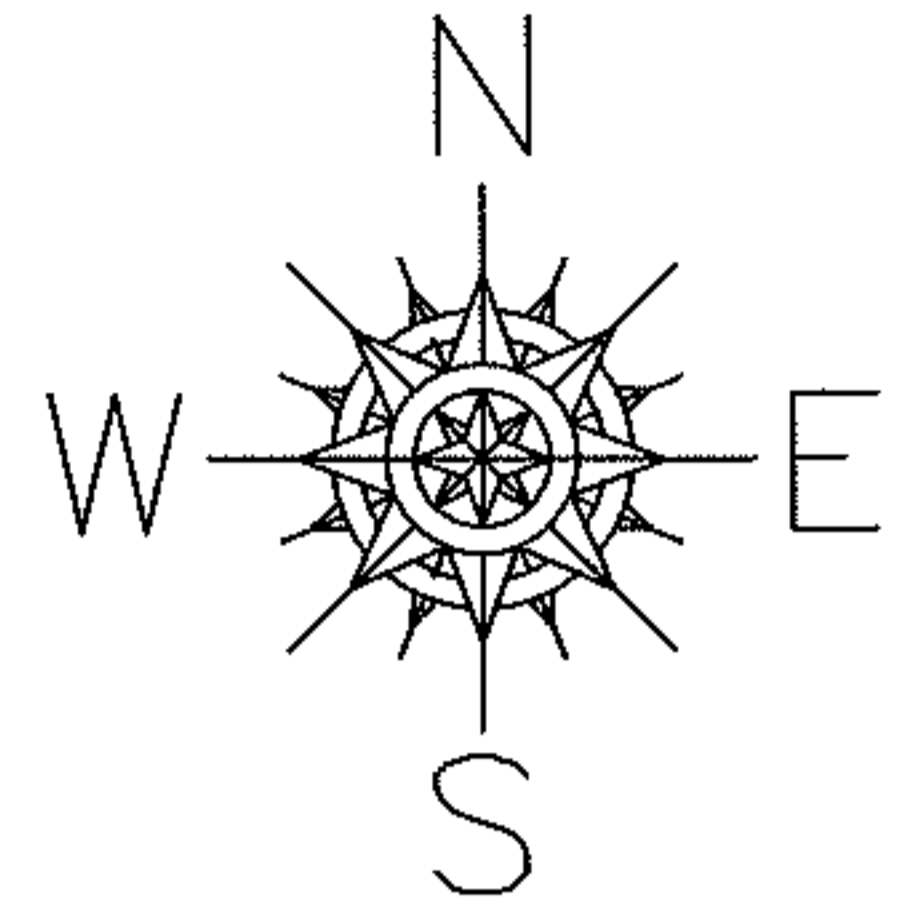


PARENT PARCEL: 03-00-075-106-006

CHILD PARCEL: 03-00-075-106-013, -014

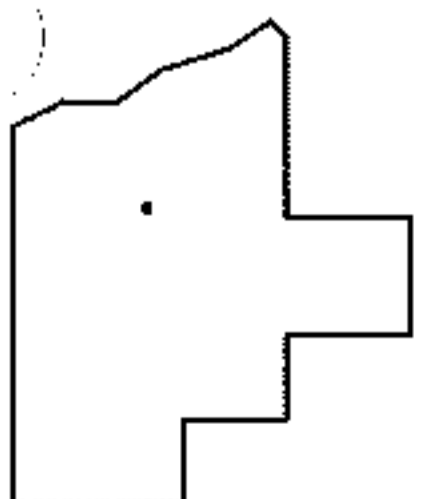
13-00381

STARTING POINT: SOUTHWEST CORNER OF S/L 92 IN RIDGEWOOD ALLOT. (VOL.7 PG.5)



LOR-254-0.01

10-WD



SPLITS/DEEDS PROCESSED

LORAIN COUNTY TAX MAP DEPARTMENT
226 MIDDLE AVE. ELYRIA, OHIO

SURVEYED BY: RICHARD F. MATHIAS

CLOSURE: .00:10,000

MAP PAGE(S): 3-00-075-A

APPROVED BY: RRM DATE: 2-19-13

SCALE: 1"= 100 PRIOR INST.: DV 299/256