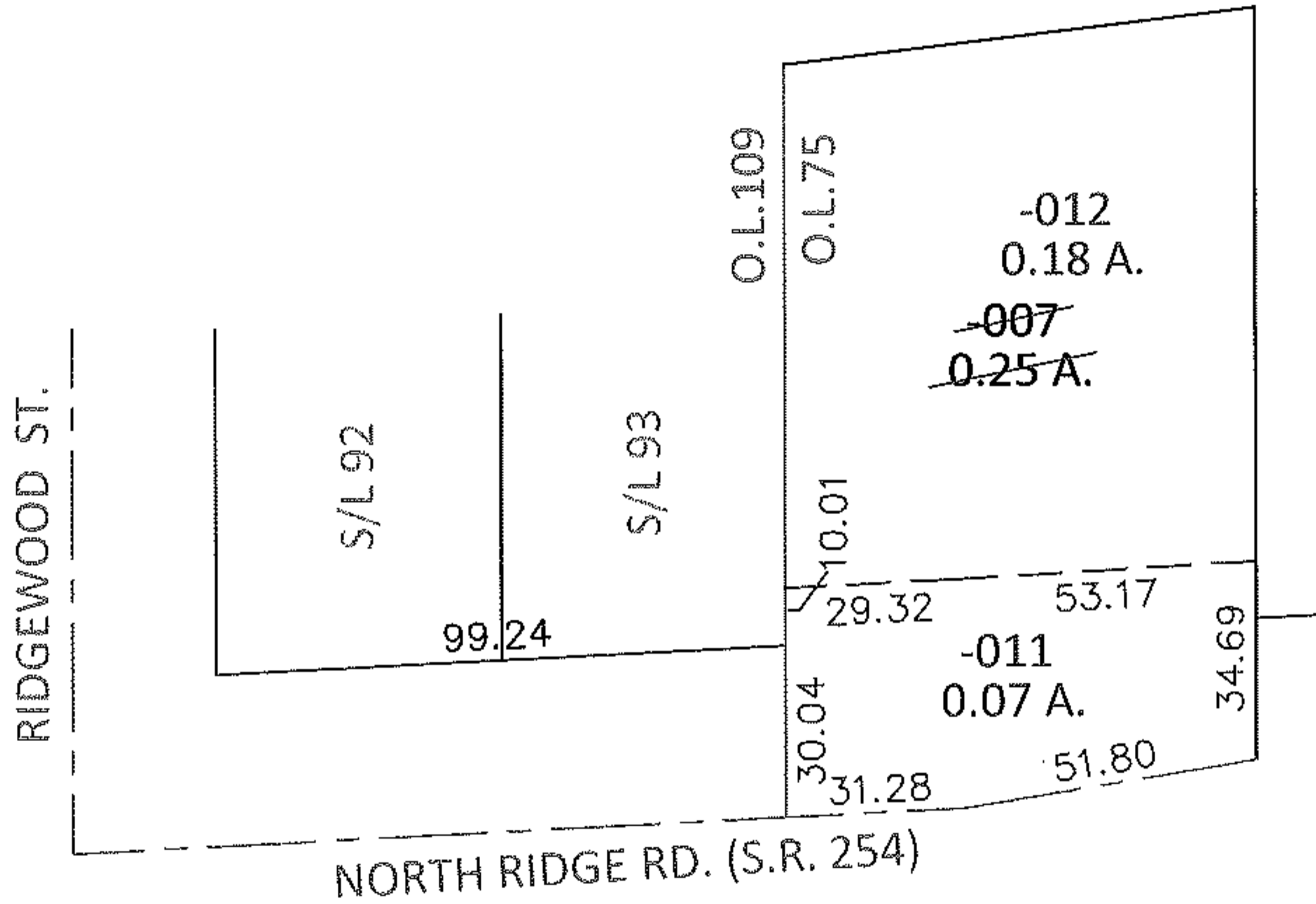
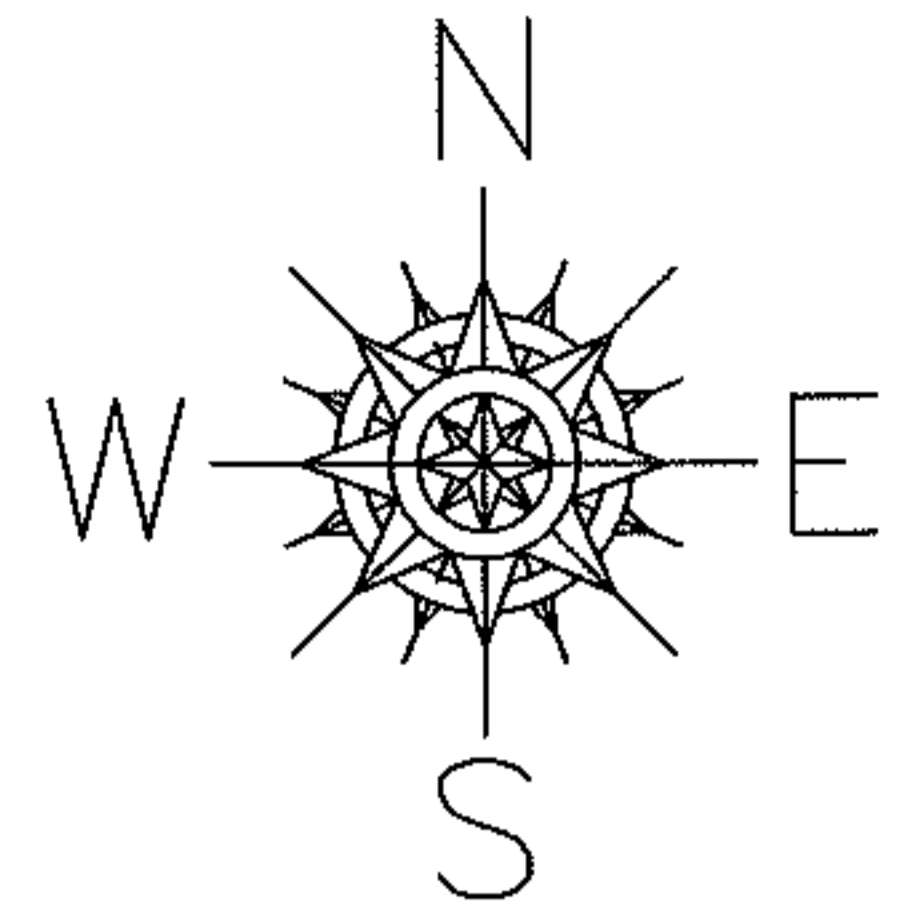


PARENT PARCEL: 03-00-075-106-007

CHILD PARCEL: 03-00-075-106-011, -012

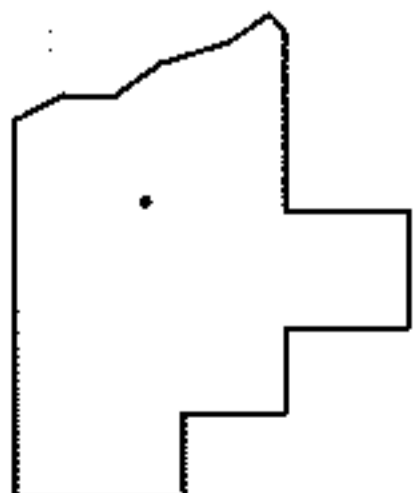
STARTING POINT: SOUTHWEST CORNER OF S/L 92 IN RIDGEWOOD ALLOT.(VOL.7 PG.5)

13-00379



LOR-254-0.01

7-WD3



SPLITS/DEEDS PROCESSED

LORAIN COUNTY TAX MAP DEPARTMENT
226 MIDDLE AVE. ELYRIA, OHIO

SURVEYED BY: RICHARD F. MATHIAS

CLOSURE: .01:10,000

MAP PAGE(S): 3-00-075-A

APPROVED BY: RRM DATE: 2-19-13

SCALE: 1"= 50' PRIOR INST.: 20080245641