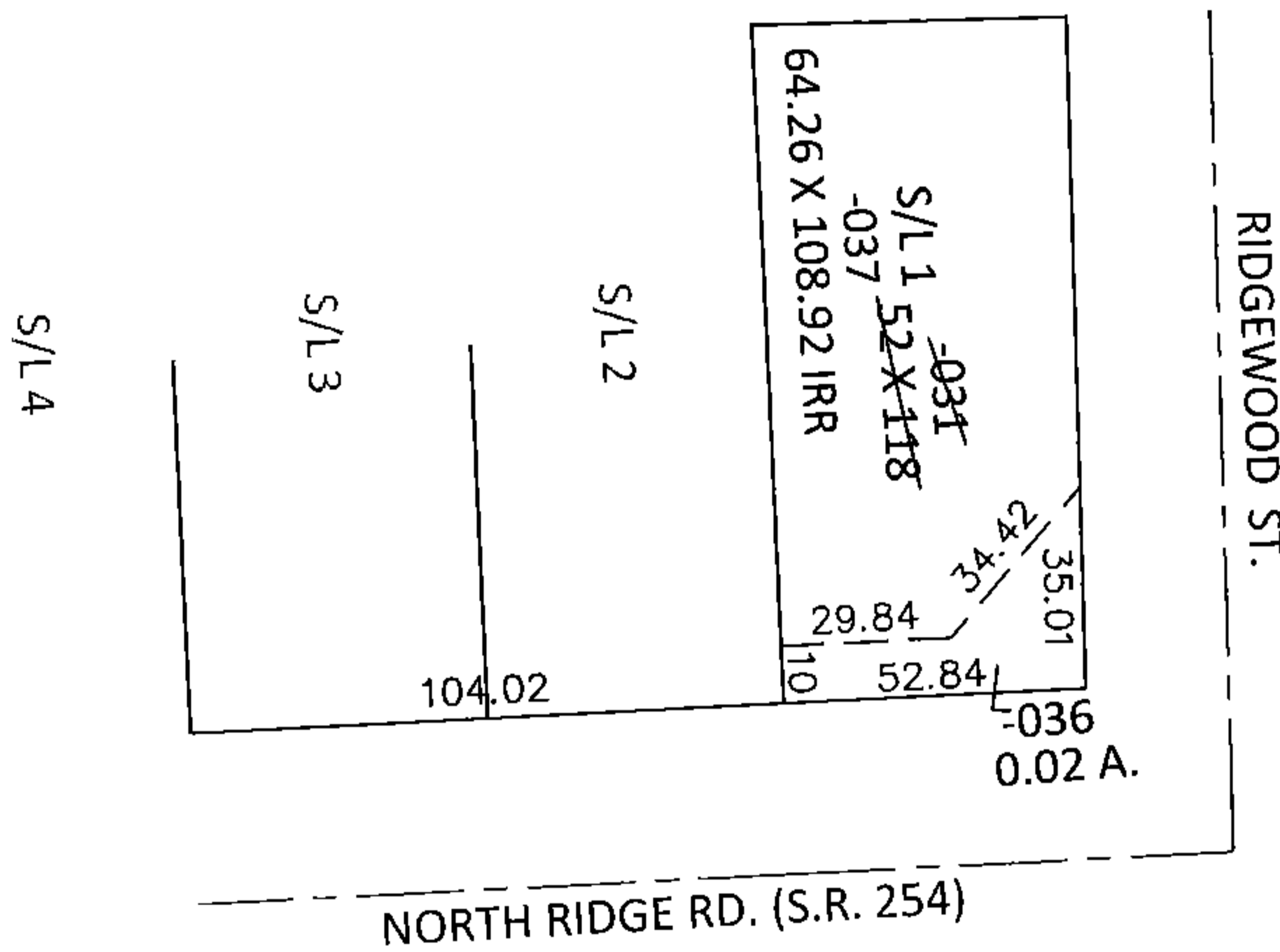
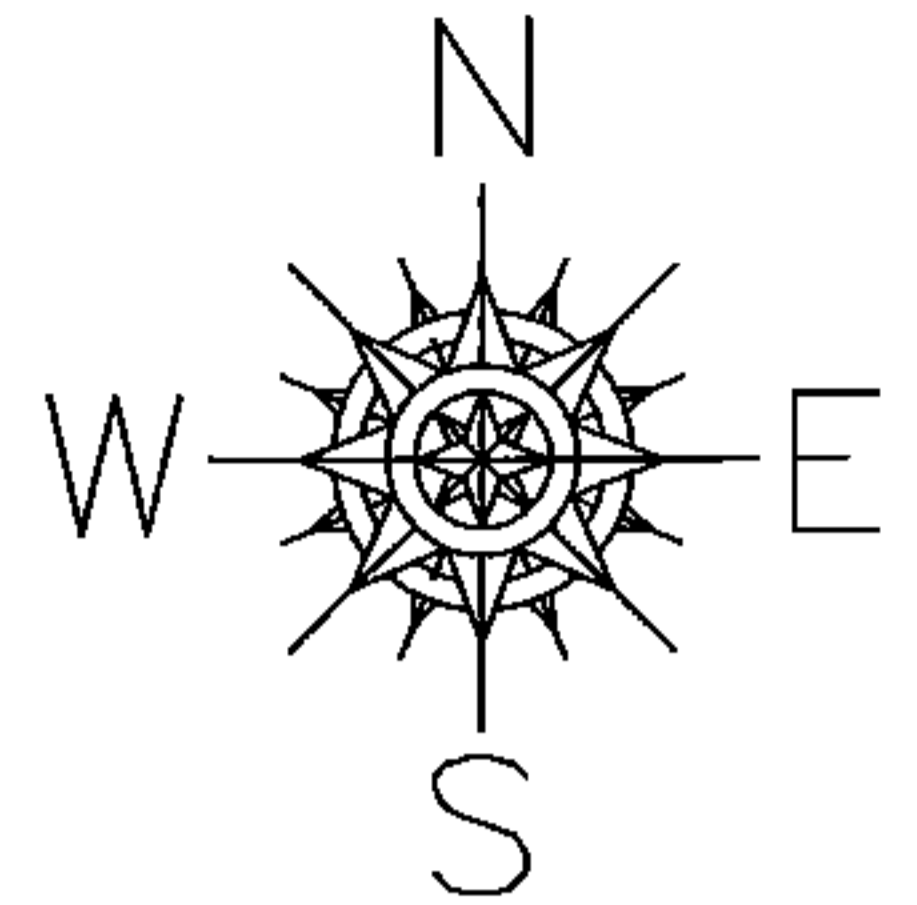


PARENT PARCEL: 03-00-109-130-031

CHILD PARCEL: 03-00-109-130-036, -037

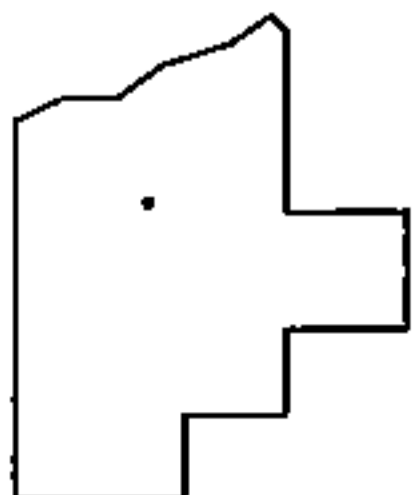
STARTING POINT: SOUTHEAST CORNER OF S/L 4 IN RIDGEWOOD ALLOT.(VOL.7 PG.5)

13-00375



LOR-254-0.01

5-WD



SPLITS/DEEDS PROCESSED

LORAIN COUNTY TAX MAP DEPARTMENT
226 MIDDLE AVE. ELYRIA, OHIO

SURVEYED BY: RICHARD F. MATHIAS

CLOSURE: .01:10,000

MAP PAGE(S): 3-00-109-B

APPROVED BY: RRM DATE: 2-19-13

SCALE: 1"= 50' PRIOR INST.: 20020827551