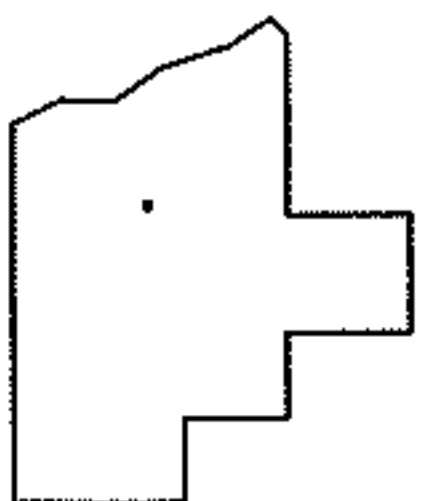
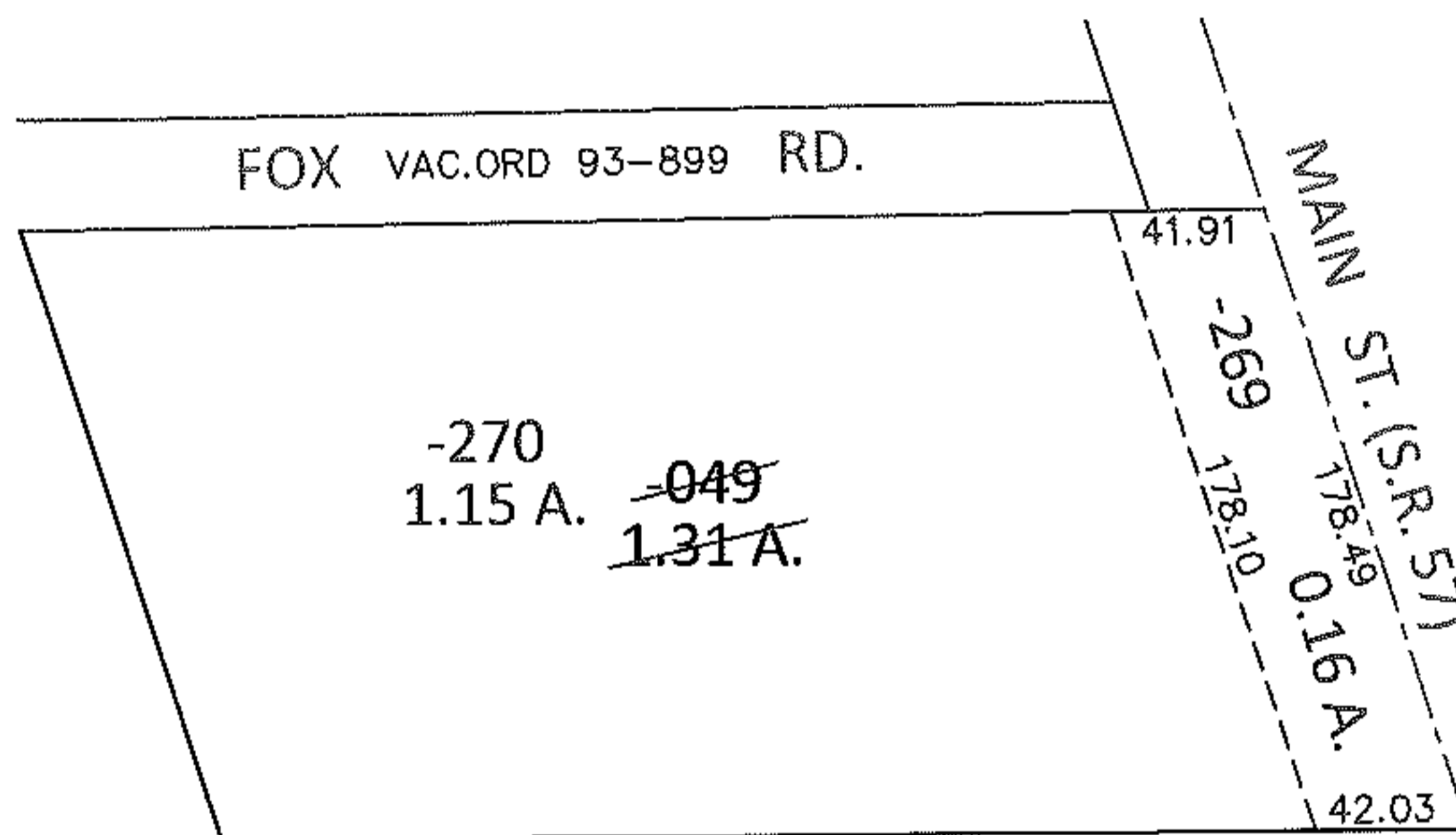
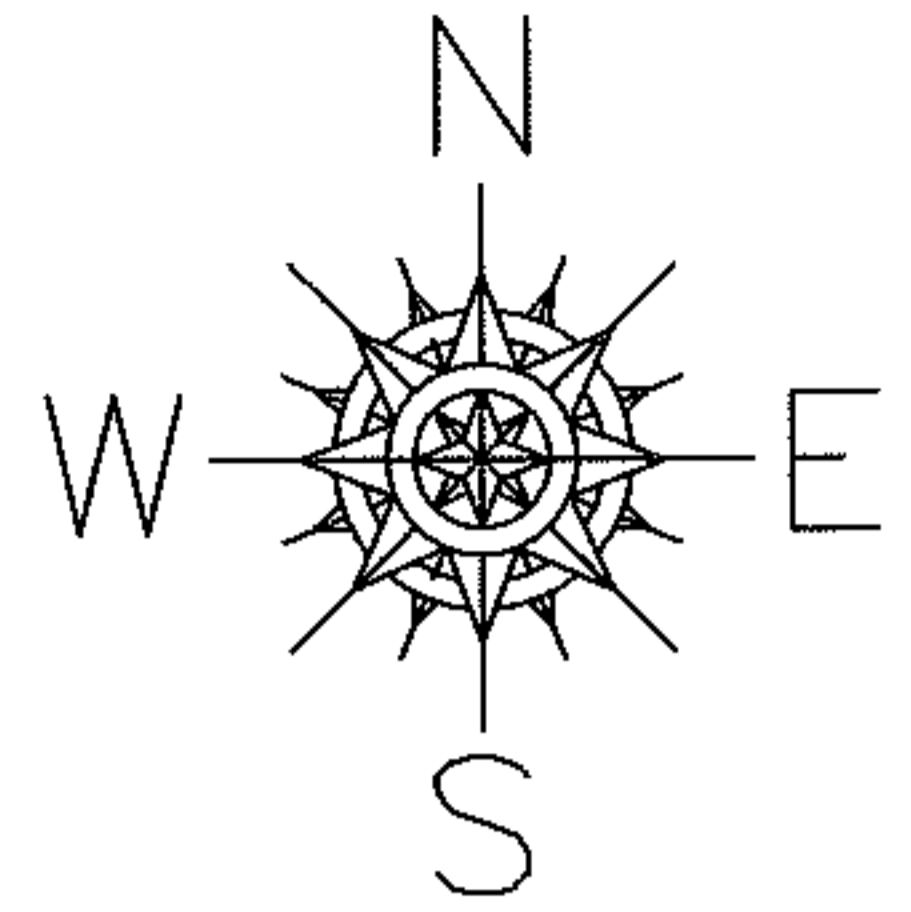


PARENT PARCEL: 11-00-098-000-049

CHILD PARCEL: 11-00-098-000-269, -270

13-00366

STARTING POINT: INTERSECTION OF SOUTH LINE OF VAC. FOX RD. AND C/L OF S.R.57



SPLITS/DEEDS PROCESSED

LORAIN COUNTY TAX MAP DEPARTMENT
226 MIDDLE AVE. ELYRIA, OHIO

SURVEYED BY: KENNETH C. DEAN JR.

CLOSURE: .00:10,000

MAP PAGE(S): 11-00-098-A

APPROVED BY: RRM DATE: 1-3-13

SCALE: 1"= 100 PRIOR INST.: OR 797/908