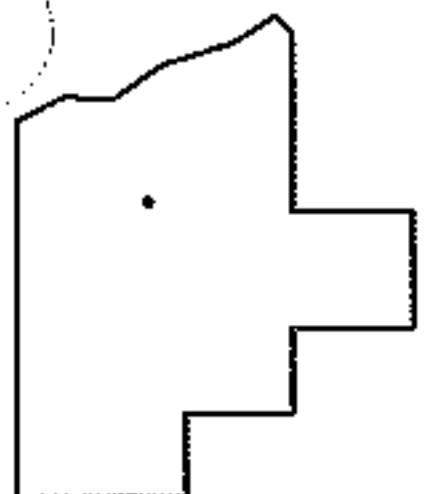
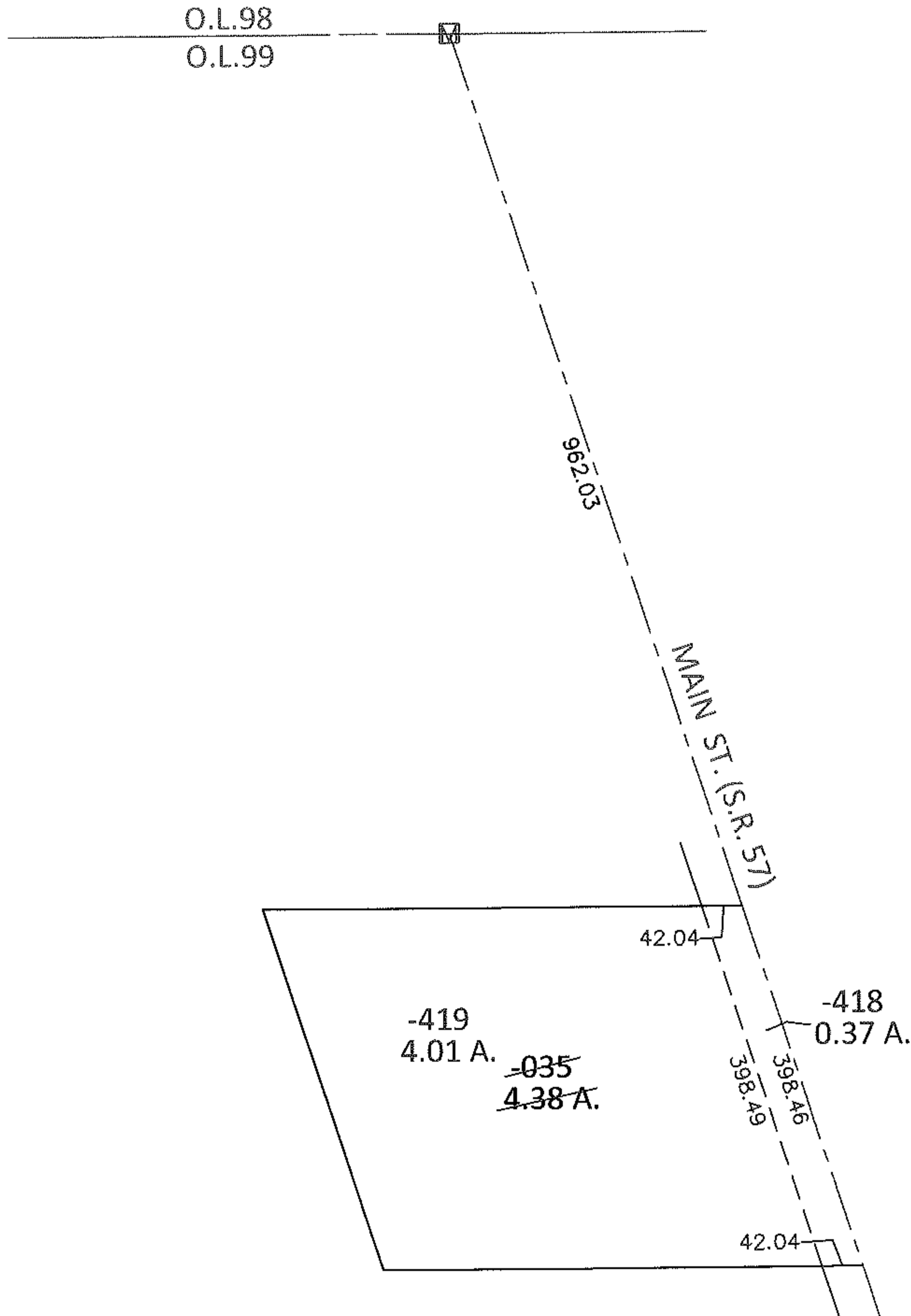
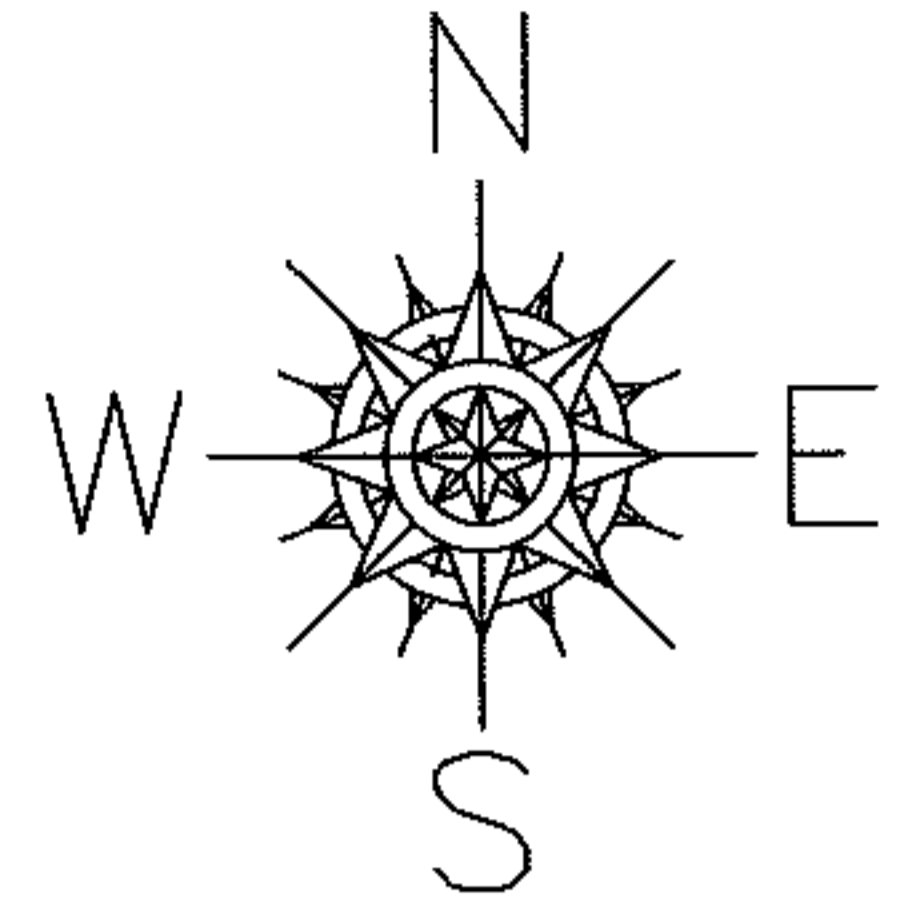


PARENT PARCEL: 11-00-099-000-035

CHILD PARCEL: 11-00-099-000-418, -419

13-00362

STARTING POINT: AT A MON BOX AT THE INTERSECTION OF C/L OF S.R.57 AND NORTH LINE OF O.L.99



SPLITS/DEEDS PROCESSED

LORAIN COUNTY TAX MAP DEPARTMENT
226 MIDDLE AVE. ELYRIA, OHIO

SURVEYED BY: KENNETH C. DEAN JR.

CLOSURE: .00:10,000

MAP PAGE(S): 11-E SOUTH

APPROVED BY: RRM DATE: 1-2-13

SCALE: 1"= 200 PRIOR INST.: DV 616/223