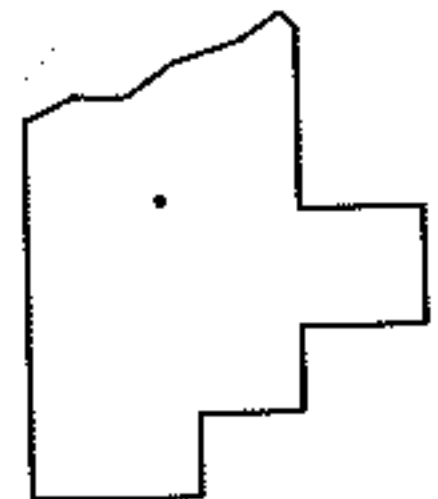
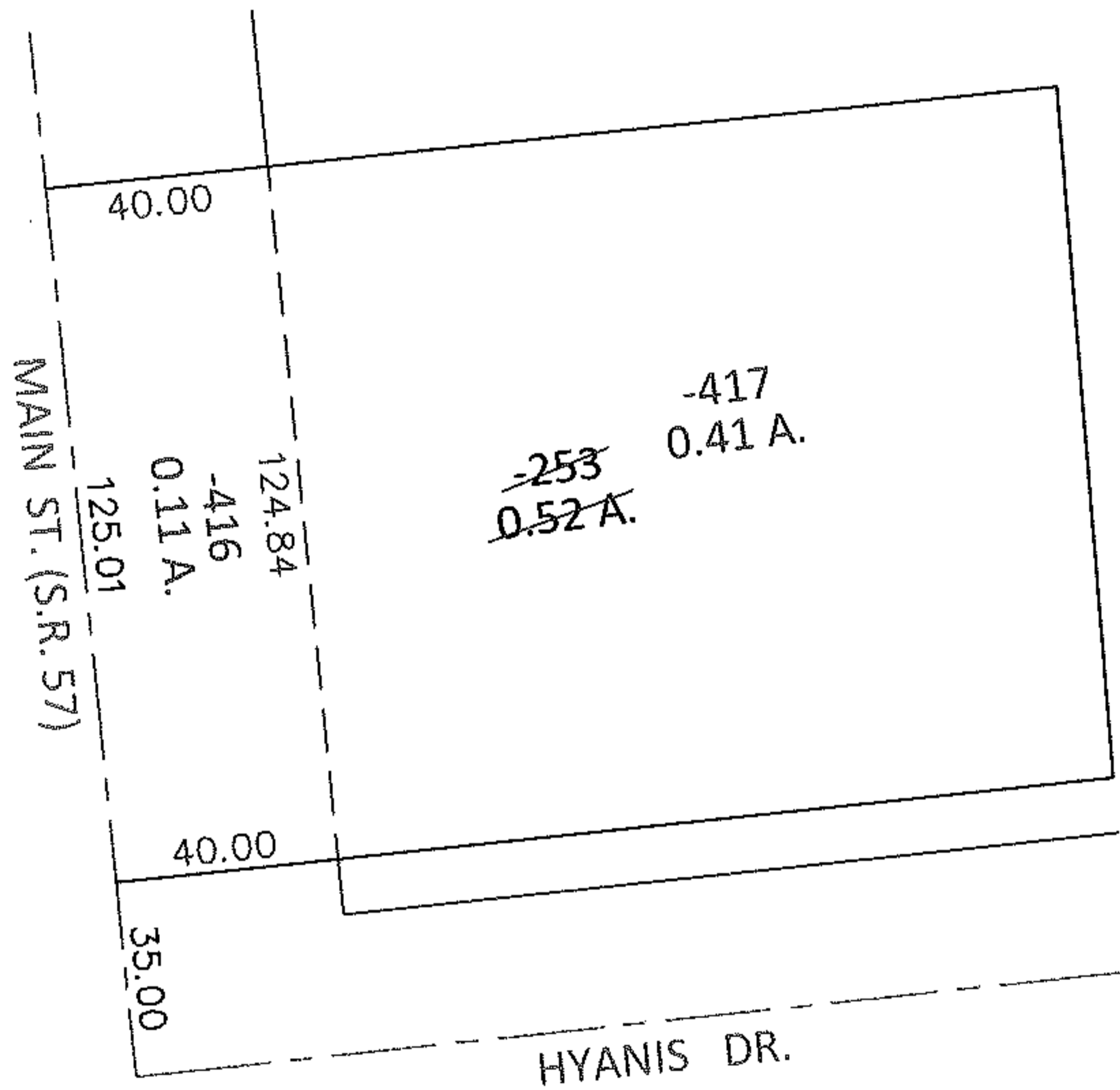
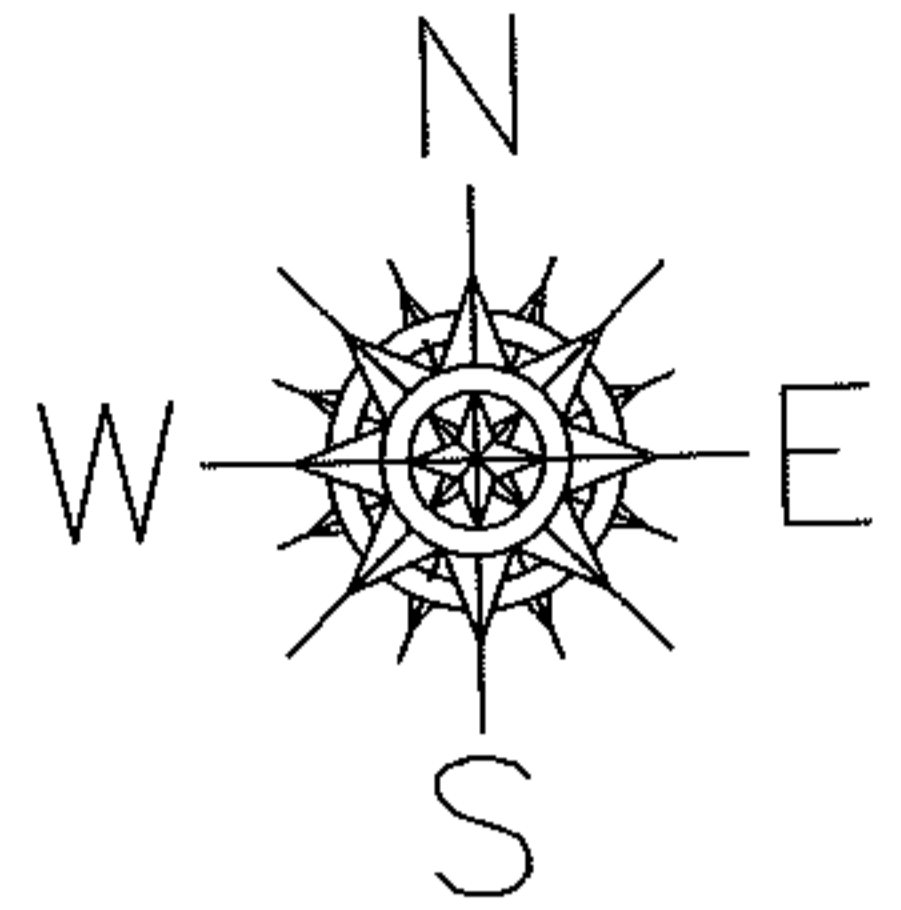


PARENT PARCEL: 11-00-099-000-253

CHILD PARCEL: 11-00-099-000-416, -417

STARTING POINT: INTERSECTION OF C/L OF S.R.57 AND C/L OF HYANIS DR.

13-00361



**SPLITS/DEEDS PROCESSED**

LORAIN COUNTY TAX MAP DEPARTMENT  
226 MIDDLE AVE. ELYRIA, OHIO

SURVEYED BY: KENNETH C. DEAN JR.

CLOSURE: .00:10,000

MAP PAGE(S): 11-00-099-B

APPROVED BY: RRM DATE: 1-2-13

SCALE: 1" = 50' PRIOR INST.: 20070203974