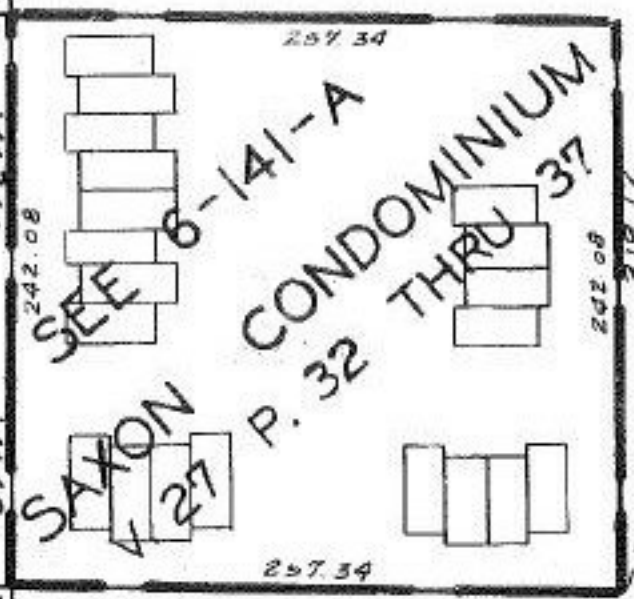
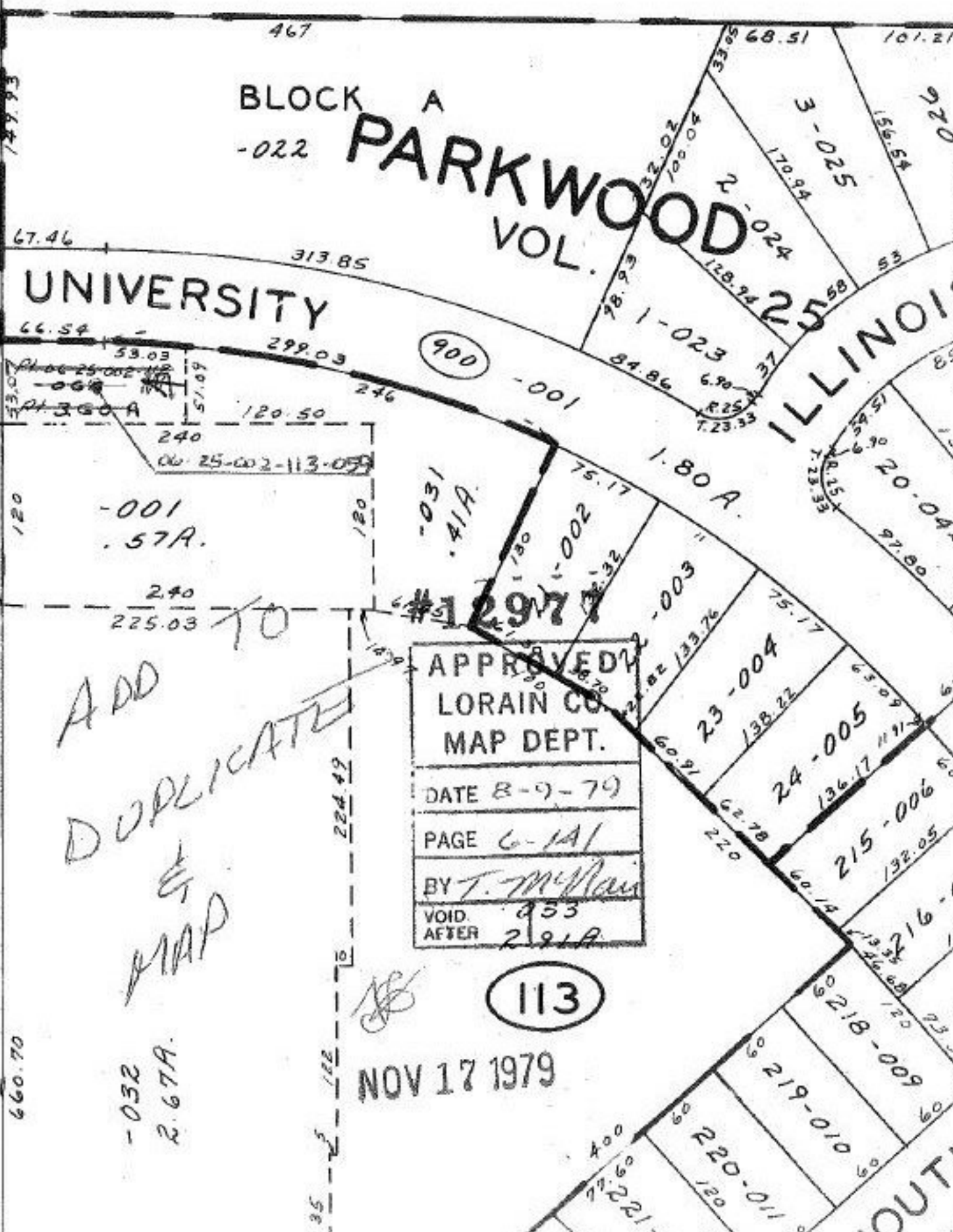


#12977



343.12
 159.08
 -010
 -12A
 242.08
 88
 -012
 -07A
 24
 1379.40
 1043.70
 692.33
 -014
 660.70
 77
 77



467
 -022
 67.46
 313.85
 66.54
 53.03
 299.03
 246
 120.50
 240
 00-25-002-113-059
 120
 -001
 .57A.
 240
 225.03
 120
 -031
 .41A.
 75.17
 1.80 A.
 1.80
 1.002
 1.32
 -003
 75.17
 23-004
 138.22
 24-005
 136.17
 215-006
 132.05
 216-0
 218-009
 219-010
 220-011
 221-0

ADD
 DUPLICATE
 TO
 MAP
 -032
 2.67A.

APPROVED
LORAIN CO.
MAP DEPT.
DATE 8-9-79
PAGE 6-1A1
BY T. McRae
VOID AFTER 953
291A

NOV 17 1979

113

ILLINOIS

MOUTH