

Pt. - 02
Pt. 13

-028
Pt. -004
Pt. 46.93A
42.60 Ac.

Change Next Pg.

Pt. -026

#12961

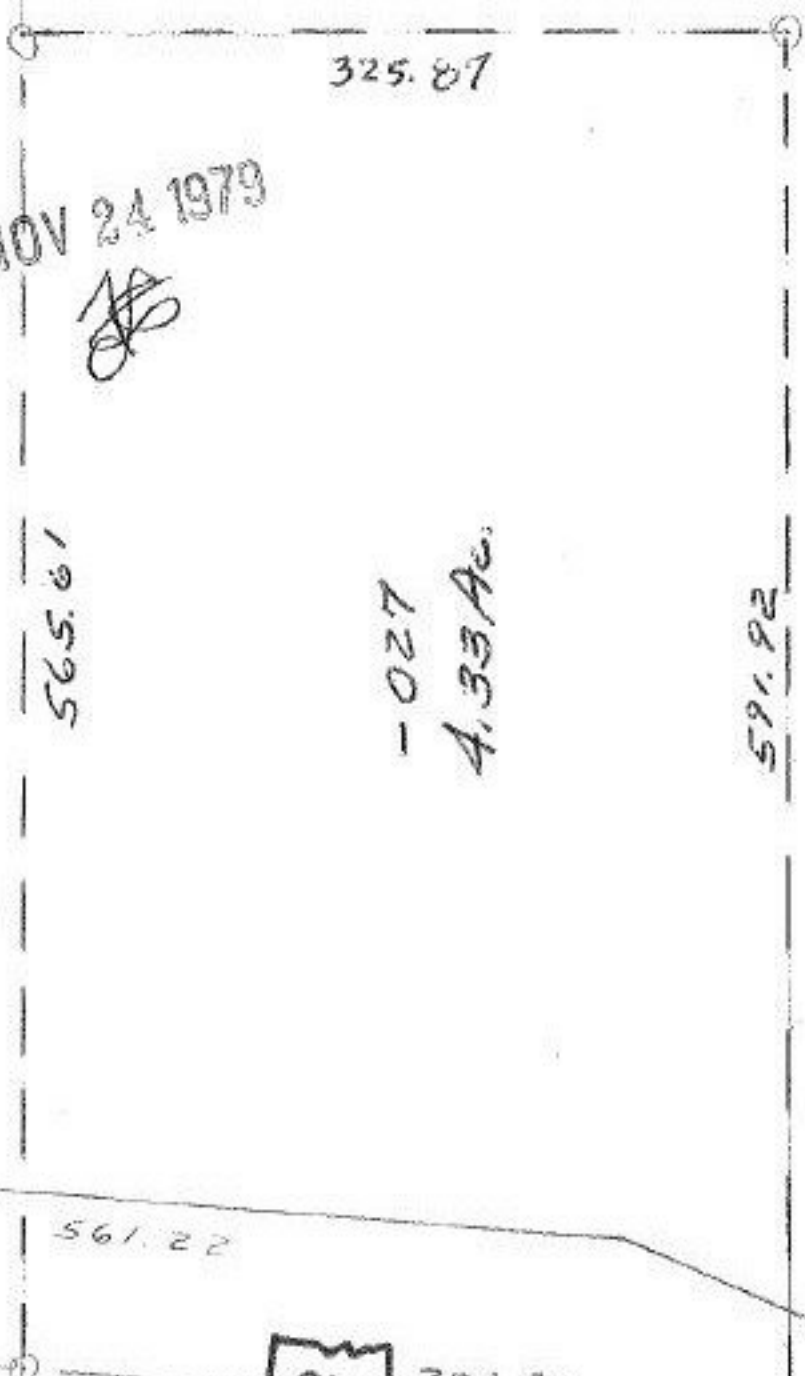
APPROVED LORAIN CO. MAP DEPT.
DATE 8-10-79
PAGE 3-B 3-00-060B
BY <i>[Signature]</i>
VOID AFTER

NOV 24 1979
[Signature]

46.93
4.33
42.60

LORAIN COUNTY MAP DEPT.
P. P. No.

LORAIN COUNTY MAP DEPT.
P. P. No.



611

326.93

591.92

565.61

-027

4.33 Ac.

325.87

561.22

600

to E. side 0660
300.97