

#12944

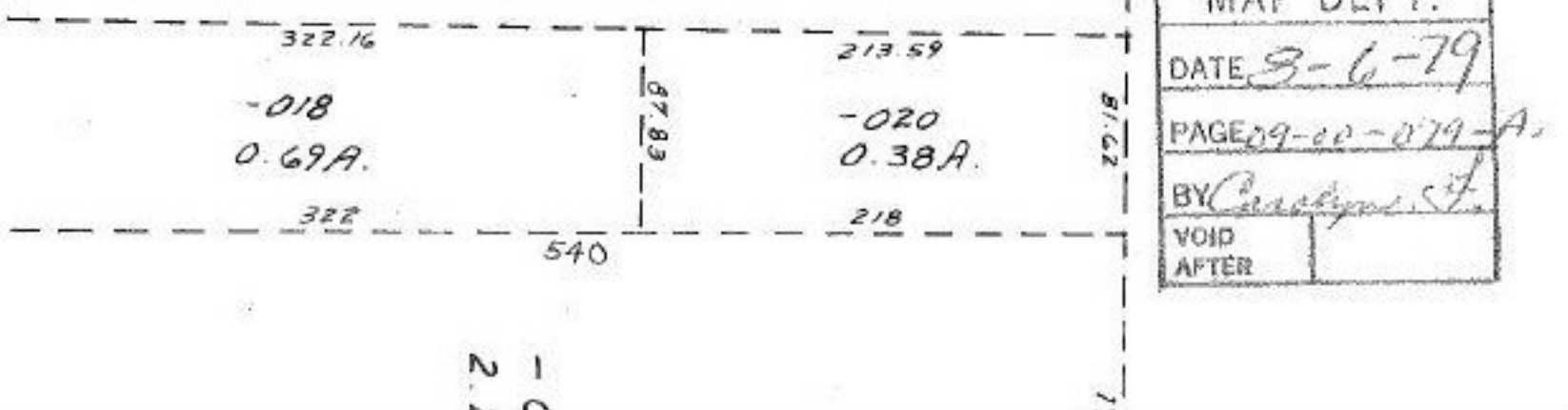
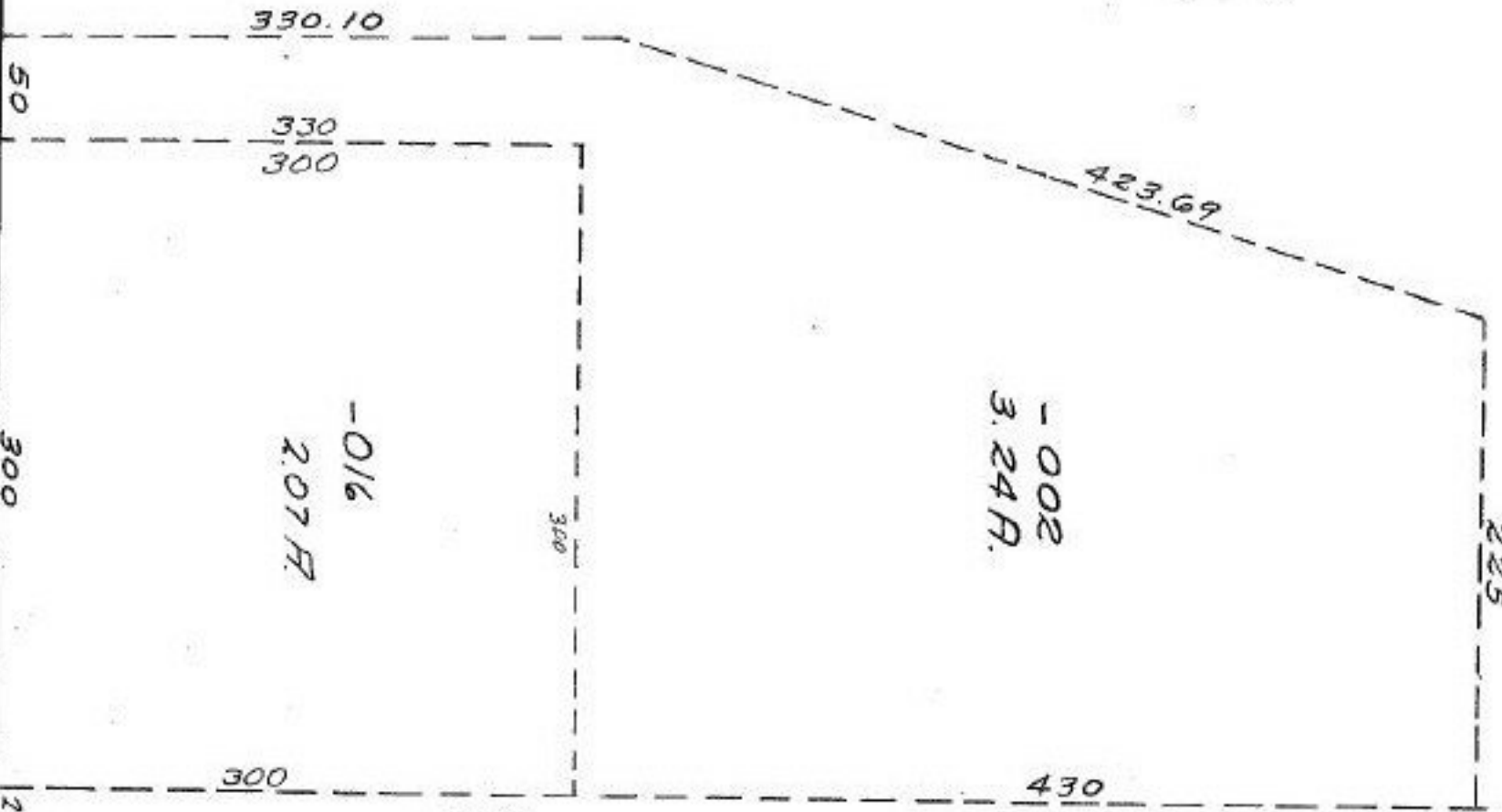
CLEVELAND
412.5
OBERLIN
214.46

SEE 9-00-089-A

506.43

97.42

TO SW CORNER
ADDITION



NOV 1 1979

#12944

APPROVED LORAIN CO. MAP DEPT.	
DATE 3-6-79	
PAGE 09-00-079-A	
BY <i>Caroline J.</i>	
VOID	AFTER