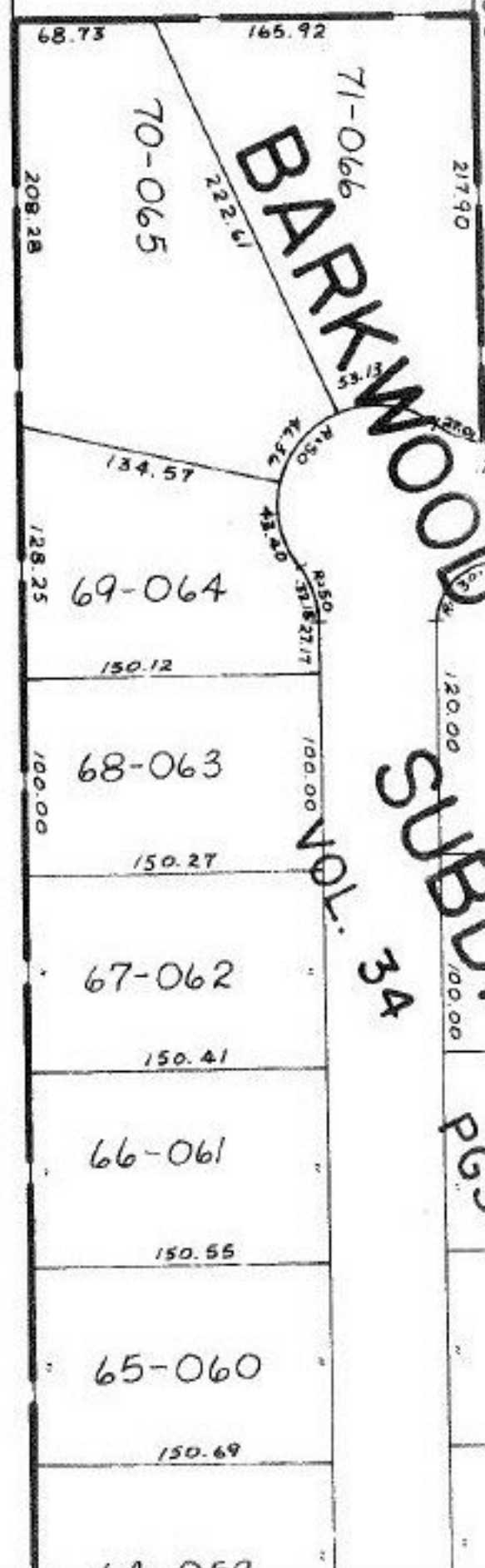


225.87 120 334.88 100 114.88 234.89

334.88  
225.87  
114.88

#12940  
-096  
1.21 A

500.0  
-013  
1.15A.  
500.0  
500  
-097  
1.33 A  
500



Pt. -014  
Pt. 17.65A.  
Pt. -098  
Pt. 16.27A.

#12940

Pt. -004  
Pt. 12.50 A.

NOV 24 1979

APPROVED
LORAIN CO.
MAP DEPT.
DATE 8-3-79
PAGE 3-00-006
BY <i>[Signature]</i>
VOID AFTER 12940