

#12928

-065
9,41A.

-022
1378A

NOV 1 1979

12 25 #12928

APPROVED
LORAIN CO.
MAP DEPT.
DATE 7-30-79
PAGE 9-00-100R
BY <i>Carroll</i>
VOID AFTER 12928

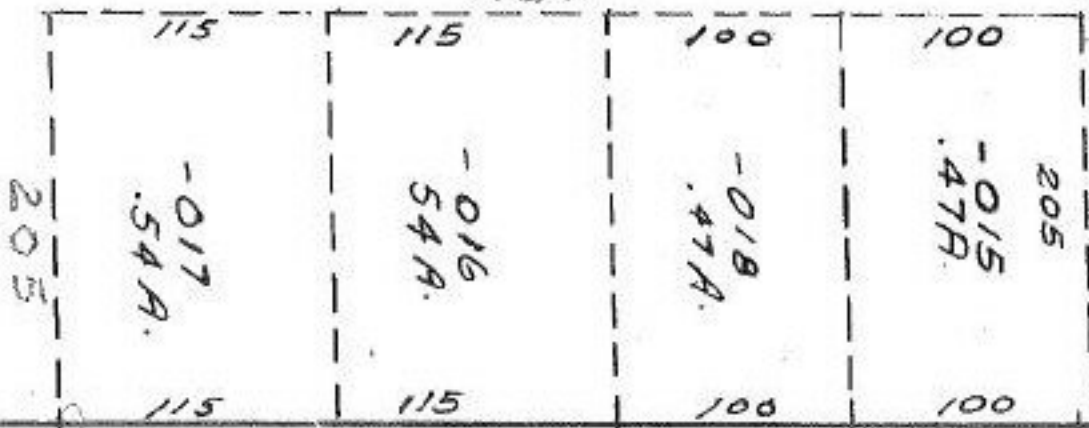
1228.36

245
726

648.86

-064
5.00A.

430



1941.92 TR. ST. NOW

200

1135.08
-029
1234.93

639.

1129.22

453.47
684.78

RD.

281.81

HALE

662.42

90°52'