

#12

#12898

APPROVED
LORAIN CO.
MAP DEPT.

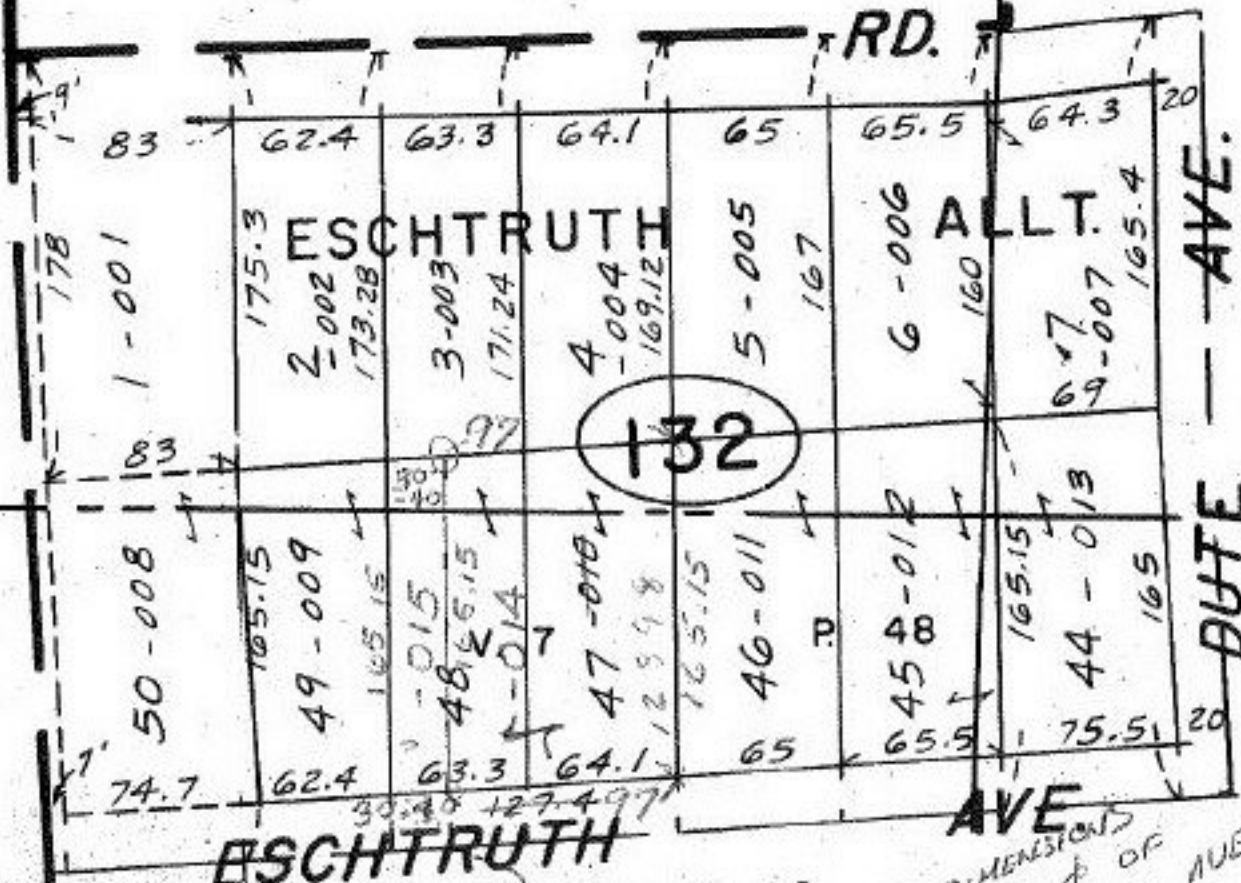
DATE 03-00-109-B

DATE 7-19-79

BY *C. A. Nye*

VOID
AFTER 12898

NOV 24 1979



SEE 6-10

NOTE: THESE DIMENSIONS
RUN TO THE Φ OF
ESCHTRUTH AVE.

E. PT. LOT 109