

RD. #12812

WEBSTER

-002
18.00 A.

-015
6.28 AC

-013
4.00 AC

-016
4.00 AC

-011
4.00 A.

25.48
9.37
16.11
9.37
25.98

#12812

APPROVED
LORAIN CO.
MAP DEPT.
DATE 6-28-79
PAGE 1B-D
BY T. McLean
VOID AFTER

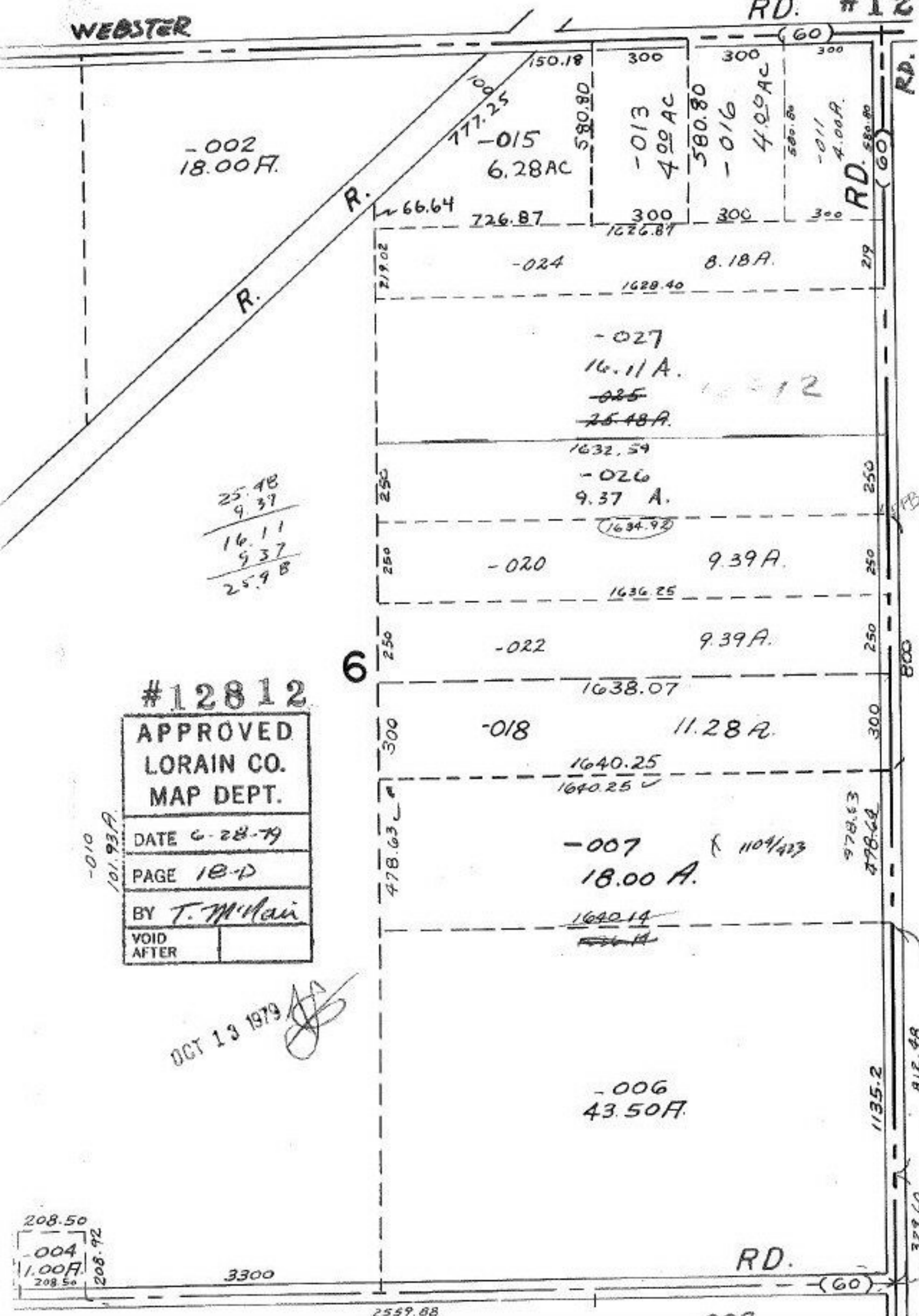
OCT 13 1979

-007
18.00 A.

-006
43.50 A.

208.50
-004
1.00 A.
208.50

6



WEST

RD.