

#12810

68

-003
14.00A.

14.00A.

-008
59.84A.

1440.12
1330.10

-001
48.00A.

53

[Signature]

OCT 27 1979

#12810

APPROVED
LORAIN CO.
MAP DEPT.

DATE: 02-21-79

PAGE 19, 45 A.

BY J. M. [Signature]

VOID AFTER 12/31/0

[Redacted]

350
-013
1.00A

-014
1.00A

-015
1.00A

024
1.00A

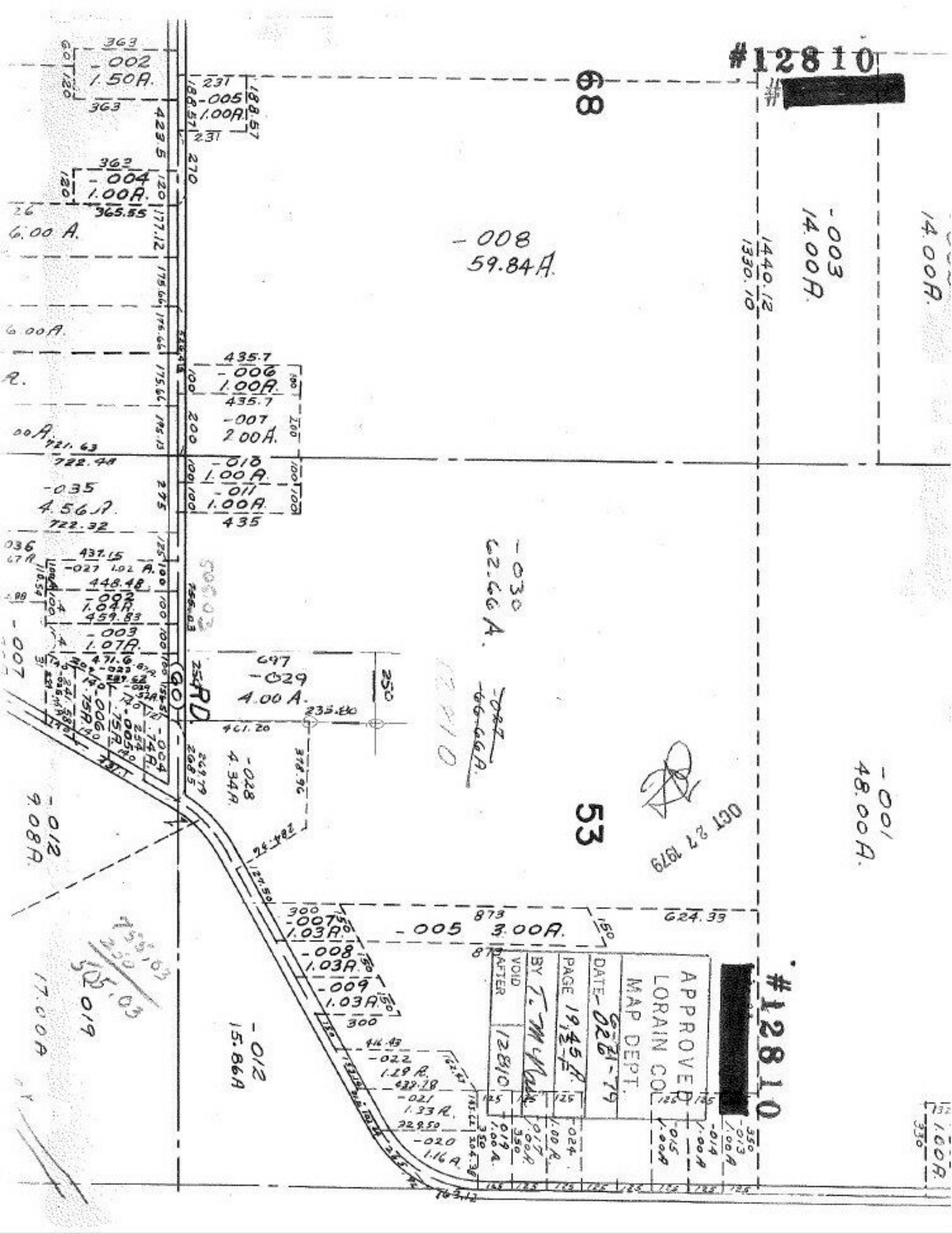
017
0.50A

019
1.00A

350
304.38

185
183
175
162
152
142
132
122
112
102
92
82
72
62
52
42
32
22
12
2
1

1.00A
330



363
-002
1.50A.

363
-004
1.00A.

6.00A.

6.00A.

036
67R
-007

-012
9.08A.

-012
17.00A

505.03
505.03
505.03

475.03
475.03
475.03

231
188.57
-005
1.00A.

270
120
365.55

435.7
-006
1.00A.

200
-007
2.00A.

275
-035
4.56A.

250
-029
4.00A.

269.79
268.5

300
-007
1.03A.

300
-008
1.03A.

300
-009
1.03A.

300
-012
15.86A

231
188.57
-005
1.00A.

270
120
365.55

435.7
-006
1.00A.

200
-007
2.00A.

275
-035
4.56A.

250
-029
4.00A.

269.79
268.5

300
-007
1.03A.

300
-008
1.03A.

300
-009
1.03A.

300
-012
15.86A

231
188.57
-005
1.00A.

270
120
365.55

435.7
-006
1.00A.

200
-007
2.00A.

275
-035
4.56A.

250
-029
4.00A.

269.79
268.5

300
-007
1.03A.

300
-008
1.03A.

300
-009
1.03A.

300
-012
15.86A

231
188.57
-005
1.00A.

270
120
365.55

435.7
-006
1.00A.

200
-007
2.00A.

275
-035
4.56A.

250
-029
4.00A.

269.79
268.5

300
-007
1.03A.

300
-008
1.03A.

300
-009
1.03A.

300
-012
15.86A

231
188.57
-005
1.00A.

270
120
365.55

435.7
-006
1.00A.

200
-007
2.00A.

275
-035
4.56A.

250
-029
4.00A.

269.79
268.5

300
-007
1.03A.

300
-008
1.03A.

300
-009
1.03A.

300
-012
15.86A

231
188.57
-005
1.00A.

270
120
365.55

435.7
-006
1.00A.

200
-007
2.00A.

275
-035
4.56A.

250
-029
4.00A.

269.79
268.5

300
-007
1.03A.

300
-008
1.03A.

300
-009
1.03A.

300
-012
15.86A

231
188.57
-005
1.00A.

270
120
365.55

435.7
-006
1.00A.

200
-007
2.00A.

275
-035
4.56A.

250
-029
4.00A.

269.79
268.5

300
-007
1.03A.

300
-008
1.03A.

300
-009
1.03A.

300
-012
15.86A

231
188.57
-005
1.00A.

270
120
365.55

435.7
-006
1.00A.

200
-007
2.00A.

275
-035
4.56A.

250
-029
4.00A.

269.79
268.5

300
-007
1.03A.

300
-008
1.03A.

300
-009
1.03A.

300
-012
15.86A

231
188.57
-005
1.00A.

270
120
365.55

435.7
-006
1.00A.

200
-007
2.00A.

275
-035
4.56A.

250
-029
4.00A.

269.79
268.5

300
-007
1.03A.

300
-008
1.03A.

300
-009
1.03A.

300
-012
15.86A