

#12809

APPROVED
LORAIN CO.
MAP DEPT.

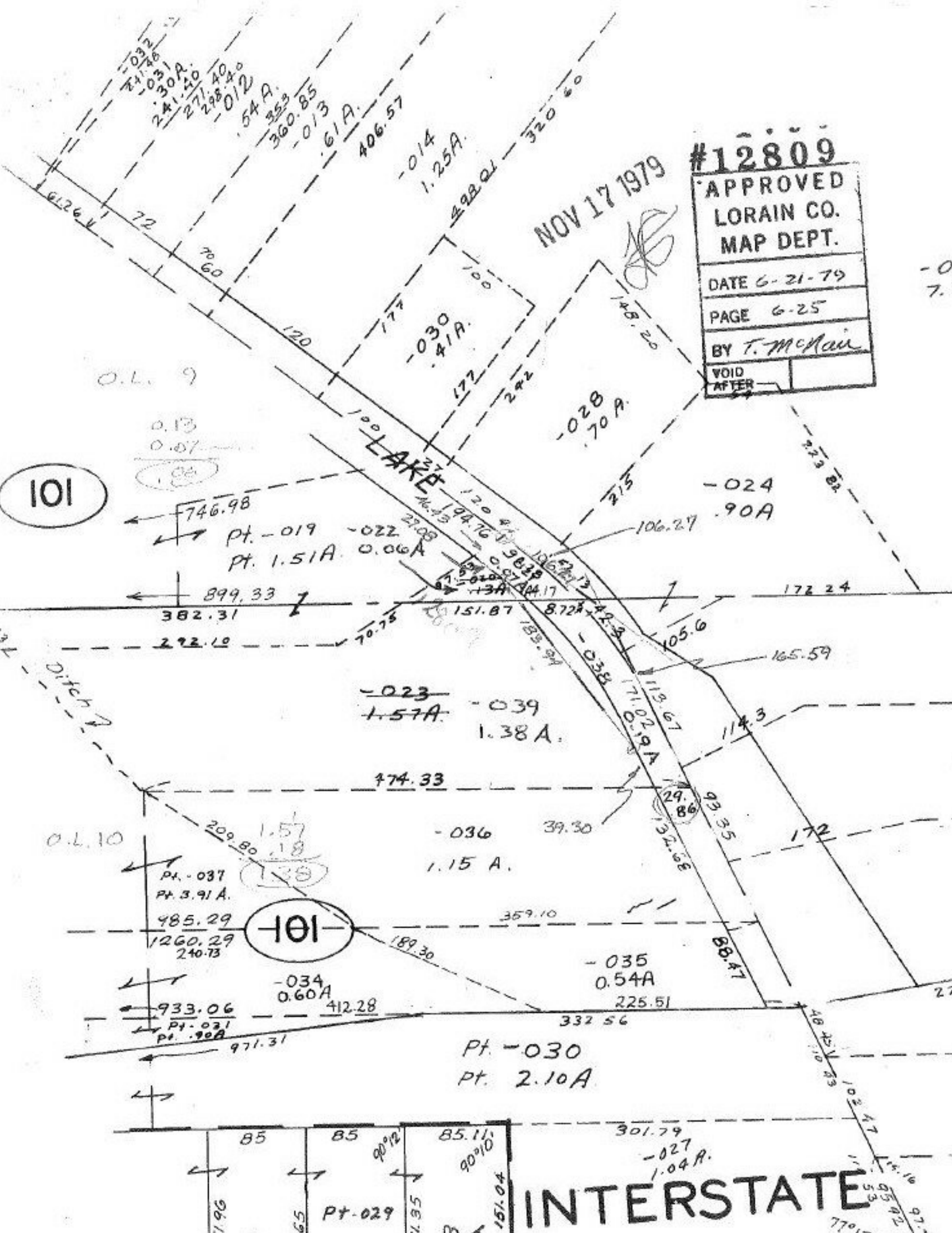
DATE 6-21-79

PAGE 6-25

BY T. McMan

VOID
AFTER

NOV 17 1979



101

101

86

INTERSTATE

O.L. 9

0.13
0.07

O.L. 10

Pt. -030
Pt. 2.10A

Pt. -029

-027
1.04A

-0.
7.8