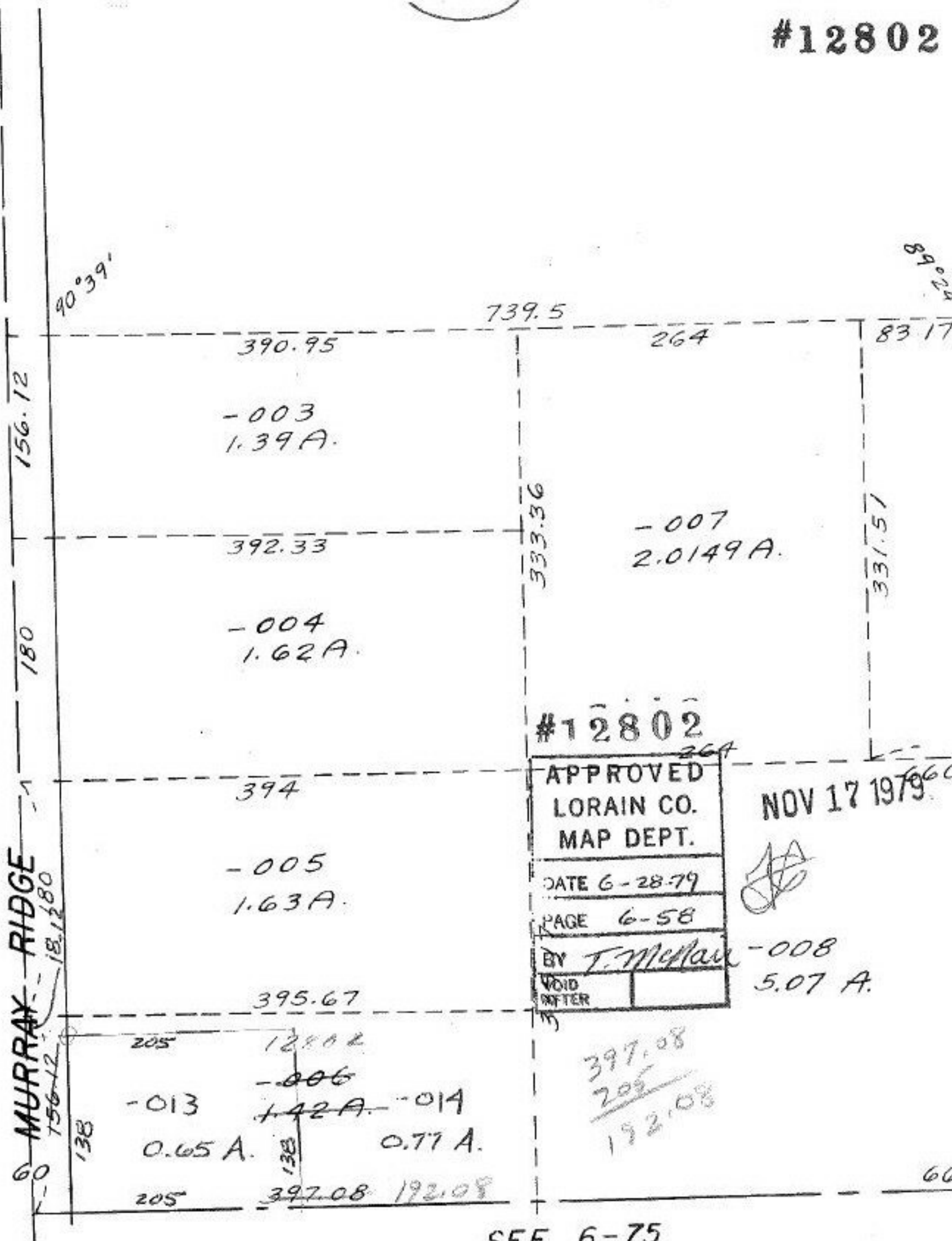


#12802



#12802

APPROVED
 LORAIN CO.
 MAP DEPT.
 DATE 6-28-79
 PAGE 6-58
 BY T. McMan
 VOID AFTER

NOV 17 1979

397.08
 205
 192.08

SEE 6-75

156.12
 28.00
 18.12

1.42
 .65
 .77
 .65
 1.42