

#12789

185 115
300 300

55495.44 39500
1.27A 0.79A
6.23 -038
-1.27 48.99A
4.96A 51.77
-0.79
50.98

1.27
- .79
2.06A ENRS W DEED

~~012~~ ~~019~~
51.77A 50.98A
12789

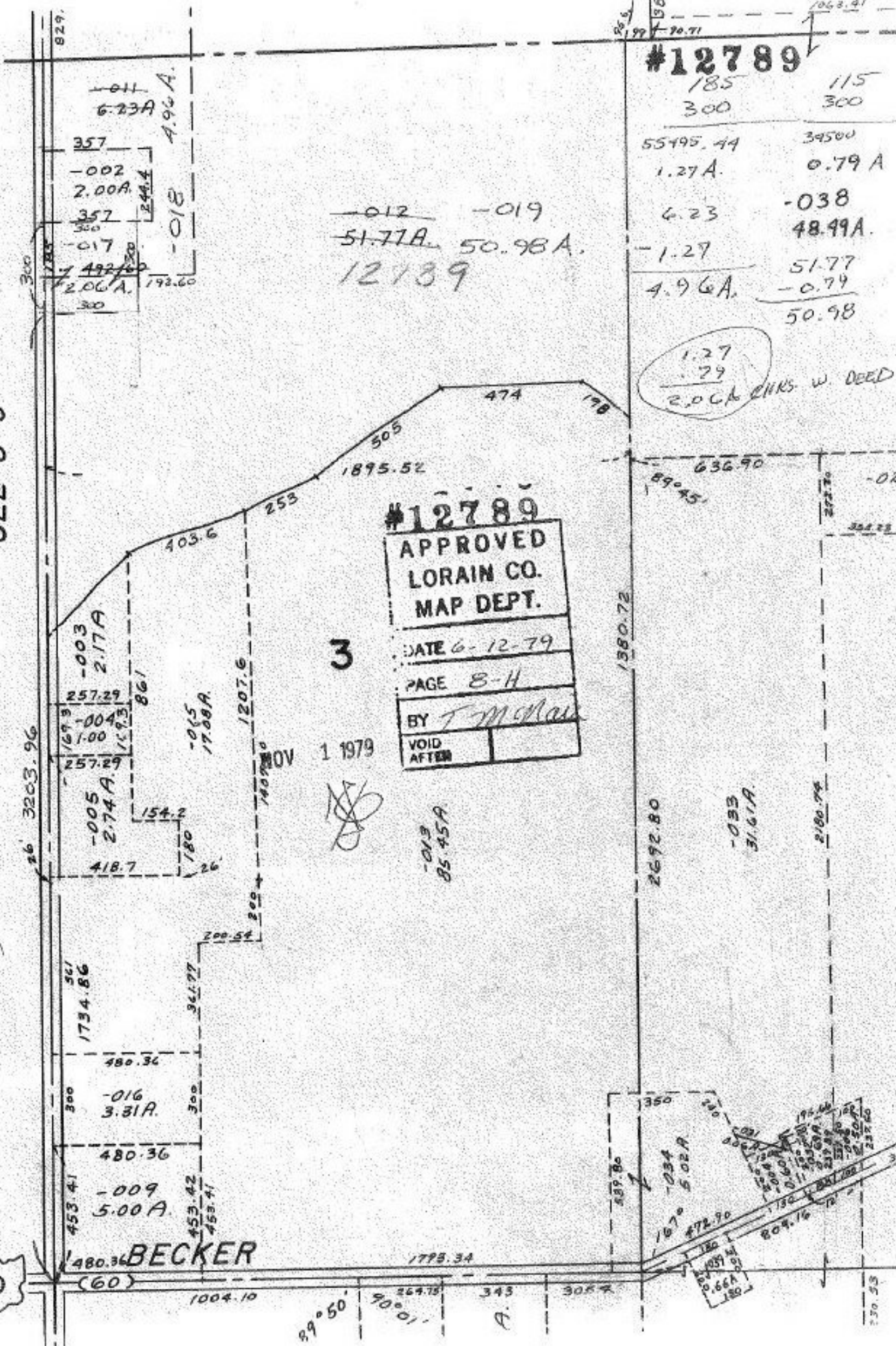
SEE 8-G

#12789
APPROVED
LORAIN CO.
MAP DEPT.
DATE 6-12-79
PAGE 8-H
BY T. M. Hall
VOID AFTER

3

1 1979

-013
85.45A



011
6.23A
A.96A

357
-002
2.00A
357
-017

492.60
2.06A
192.60

244.4
-018

300

26' 3203.96

-003
2.17A

257.29
-004
1.00
257.29

-005
2.74A

418.7

154.2
180
26
17.08A

561
1734.86

480.36
-016
3.31A

480.36
-009
5.00A

453.41
453.42
453.41

BECKER

200.54

1207.6

1407.80

253

1895.52

505

474

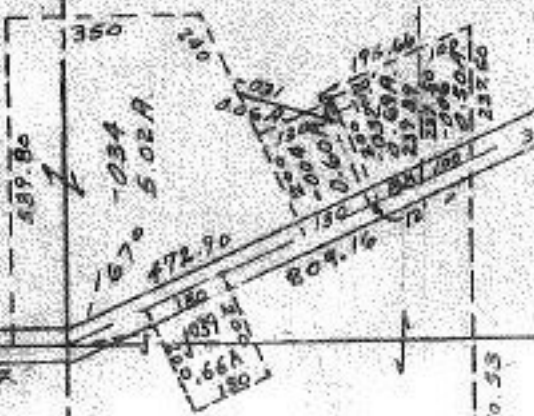
178

1380.72

2692.80

-033
31.61A

2180.74



10

(60)

1004.10

89° 50'

264.75
90° 01'

343

305.4

230.53