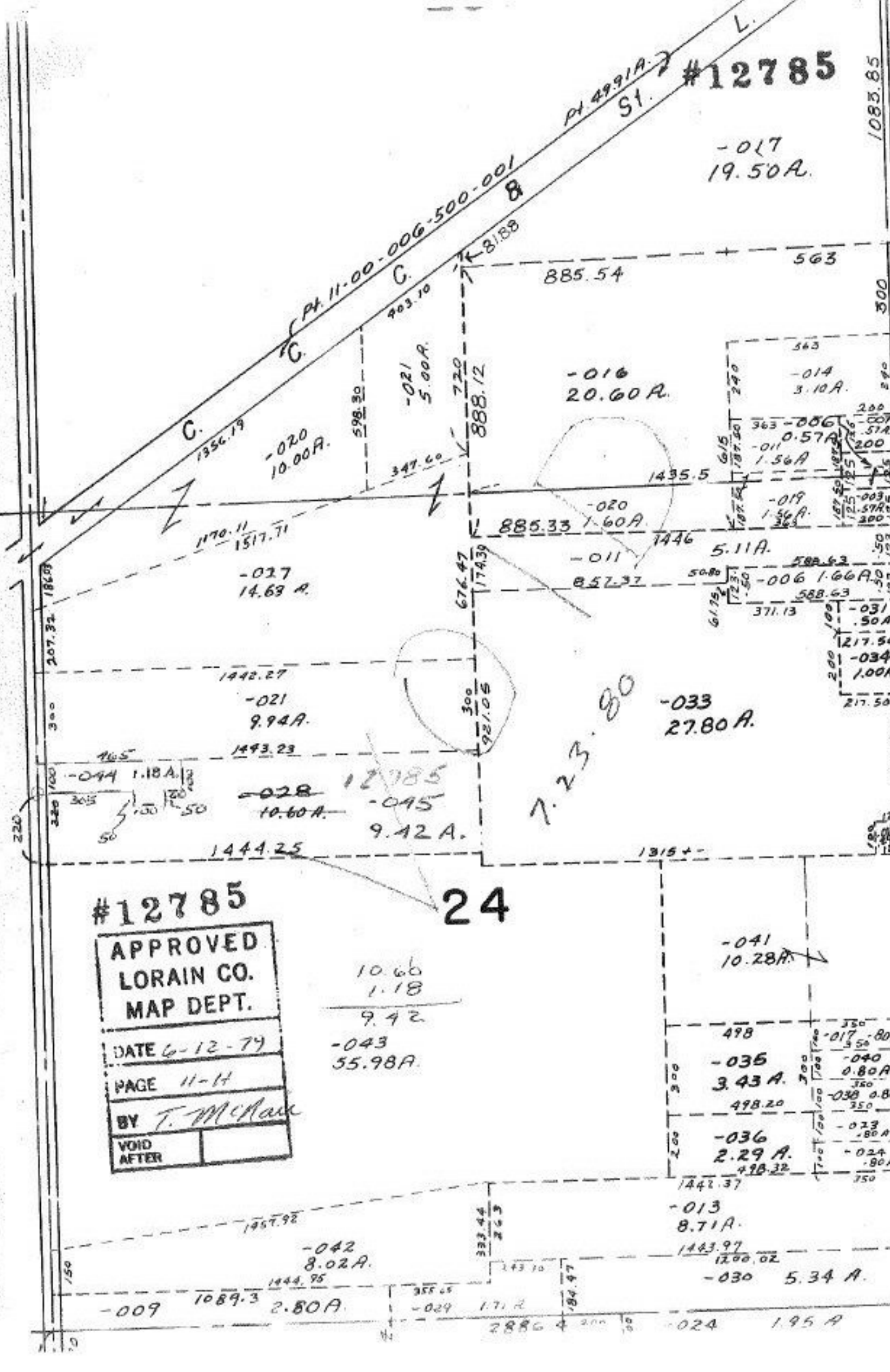


Pl. 4991A. ST. #12785

-017  
19.50 A.

Pl. 11-00-006-500-001  
8



#12785

24

APPROVED  
LORAIN CO.  
MAP DEPT.  
DATE 6-12-79  
PAGE 11-14  
BY T. McRae  
VOID AFTER

10.66  
1.18  
-----  
9.42  
-043  
55.98 A.

-041  
10.28 A.  
-035  
3.43 A.  
-036  
2.29 A.  
-013  
8.71 A.  
-030  
5.34 A.  
-024  
1.95 A.

-009  
1089.3  
2.80 A.  
-042  
8.02 A.  
-029  
1.71 A.

1083.85

300

290

280

270

260

250

240

230

220

210

200

190

180

170