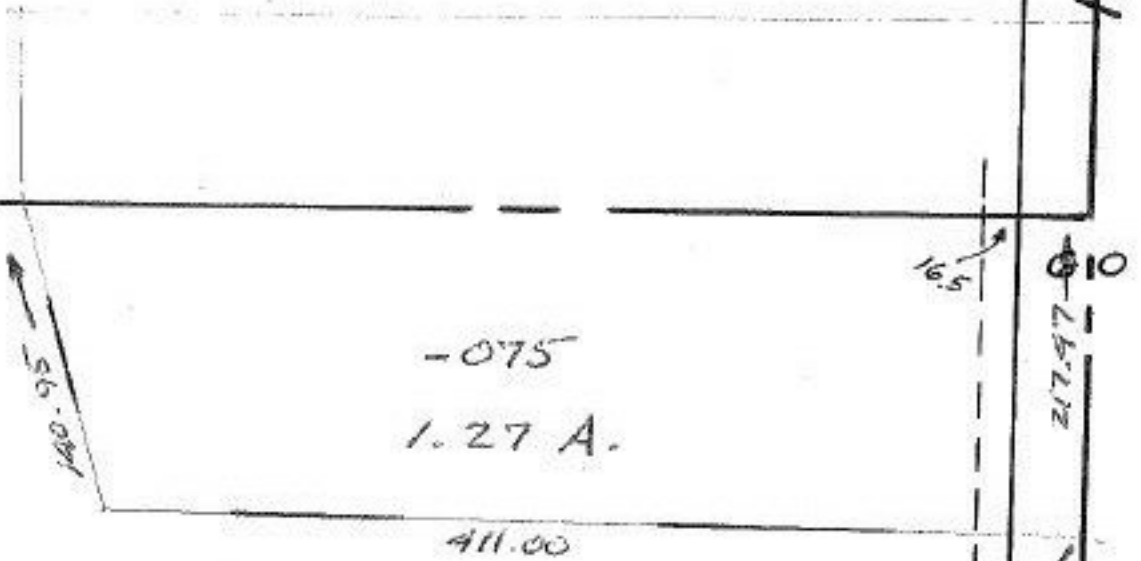


#12730

E 10-00-015-H



#12730

APPROVED
LORAIN CO.
MAP DEPT.

DATE 5-23-79

10-00-015-G & H
PAGE 10-00-016-C & D

BY T. McRae

VOID
AFTER

6-14-79

-076

77.42 A.

THIS IS 10-00-~~015~~⁰¹⁶-D
CHANGE ALSO 10-00-016-C.

594.87 TO E CAROL RD.

~~Pt. - 033~~
~~Pt. 78.69 A.~~
1.27
77.42