

#12714

Pt. 02-03-001-104-012  
Pt. 5.60A.

#12714

APPROVED  
LORAIN CO.  
MAP DEPT.

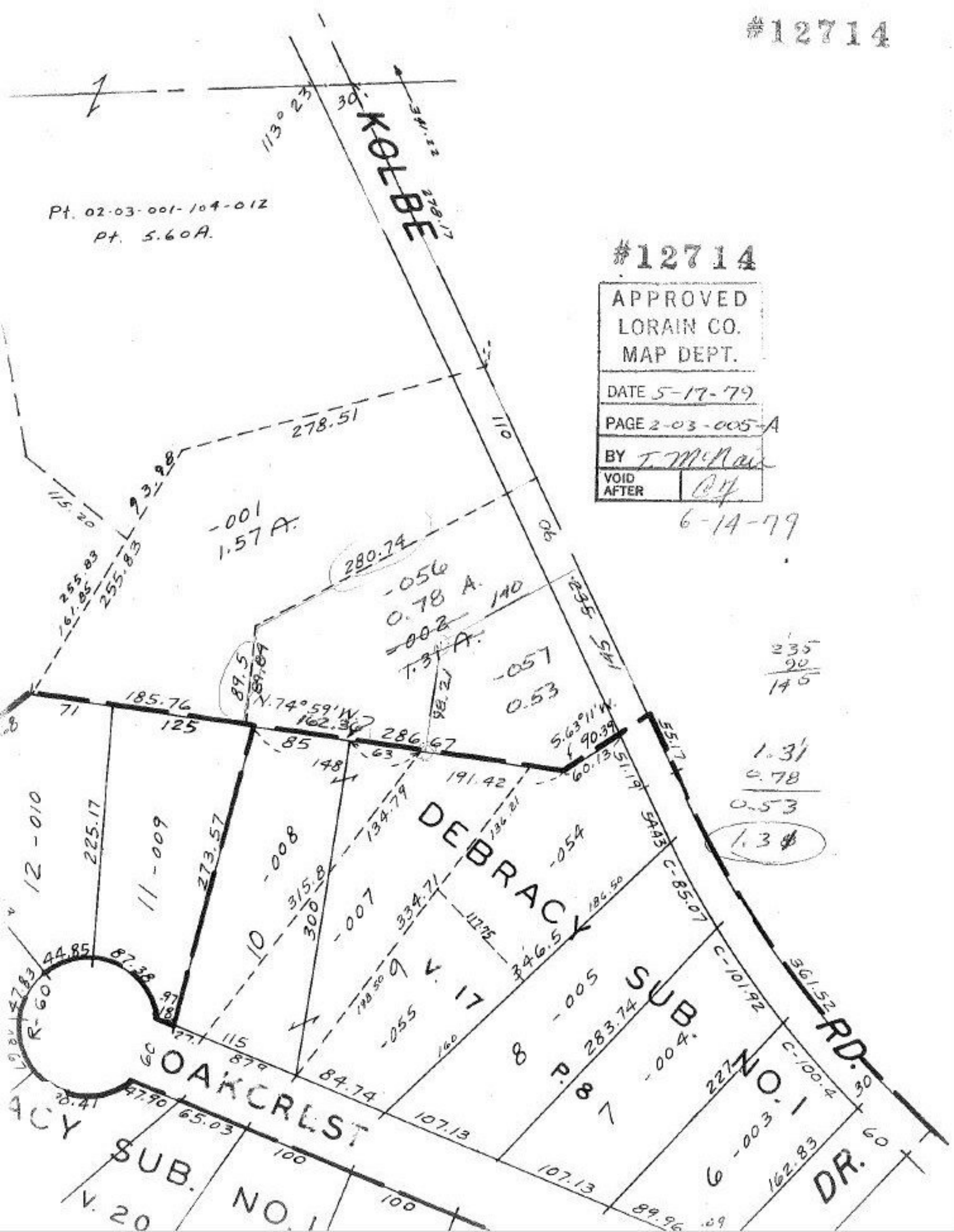
DATE 5-17-79

PAGE 2-03-005-A

BY T. McNamee

VOID  
AFTER

6-14-79



235
90
145

1.31
0.78
0.53
1.31

12-010  
225.17  
11-009  
273.57  
10-008  
315.8  
300.8  
10-007  
334.71  
117.75  
8-005  
283.74  
7-004  
227.0  
6-003  
162.83  
89.96

SOAKCREST  
SUB. NO. 1  
V. 20

DEBRACK

RD.  
DR.

KOLBE

-001  
1.57 A.

-056  
0.78 A.  
-002  
1.31 A.

-057  
0.53

8-005

6-003

R-60  
44.85  
87.38  
97.18  
20.41  
97.90  
65.03

185.76  
125  
71

N. 74° 59' W  
162.39

S. 63° 11' W  
90.39

89.5

280.74

286.67

55.17

5443 C-85.07

C-101.92

361.52

ACRY

V. 20

V. 17

8-005

6-003

60

87.38

20.41

97.90

65.03

100

107.13

107.13

89.96

227.0

162.83

60

100

100

100

107.13

107.13

89.96

227.0

162.83

60

100

100

100

107.13

107.13

89.96

227.0

162.83

60

100

100

100

107.13

107.13

89.96

227.0

162.83

60

100

100

100

107.13

107.13

89.96

227.0

162.83

60

100

100

100

107.13

107.13

89.96

227.0

162.83

60

100

100

100

107.13

107.13

89.96

227.0

162.83

60

100

100

100

107.13

107.13

89.96

227.0

162.83

60

100

100

100

107.13

107.13

89.96

227.0

162.83

60

100

100

100

107.13

107.13

89.96

227.0

162.83

60

100

100

100

107.13

107.13

89.96

227.0

162.83

60

100

100

100

107.13

107.13

89.96

227.0

162.83

60

100

100

100

107.13

107.13

89.96

227.0

162.83

60

100

100

100

107.13

107.13

89.96

227.0

162.83

60

100

100

100

107.13

107.13

89.96

227.0

162.83

60

100

100

100

107.13

107.13

89.96

227.0

162.83

60

100

100

100

107.13

107.13

89.96

227.0

162.83

60

100

100

100

107.13

107.13

89.96

227.0

162.83

60

100

100

100

107.13

107.13

89.96

227.0

162.83

60

100

100

100

107.13

107.13

89.96

227.0

162.83

60

100

100

100

107.13

107.13

89.96

227.0

162.83

60

100

100

100

107.13

107.13

89.96

227.0

162.83

60

100

100

100

107.13

107.13

89.96

227.0

162.83

60

100

100

100

107.13

107.13

89.96

227.0

162.83

60

100

100

100

107.13

107.13

89.96

227.0

162.83

60

100

100

100

107.13

107.13

89.96

227.0

162.83

60

100

100

100

107.13

107.13

89.96

227.0

162.83

60

100

100

100

107.13

107.13

89.96

227.0

162.83

60

100

100