

WOOSTER AVON LAKE

713 NC-014

172

714-015

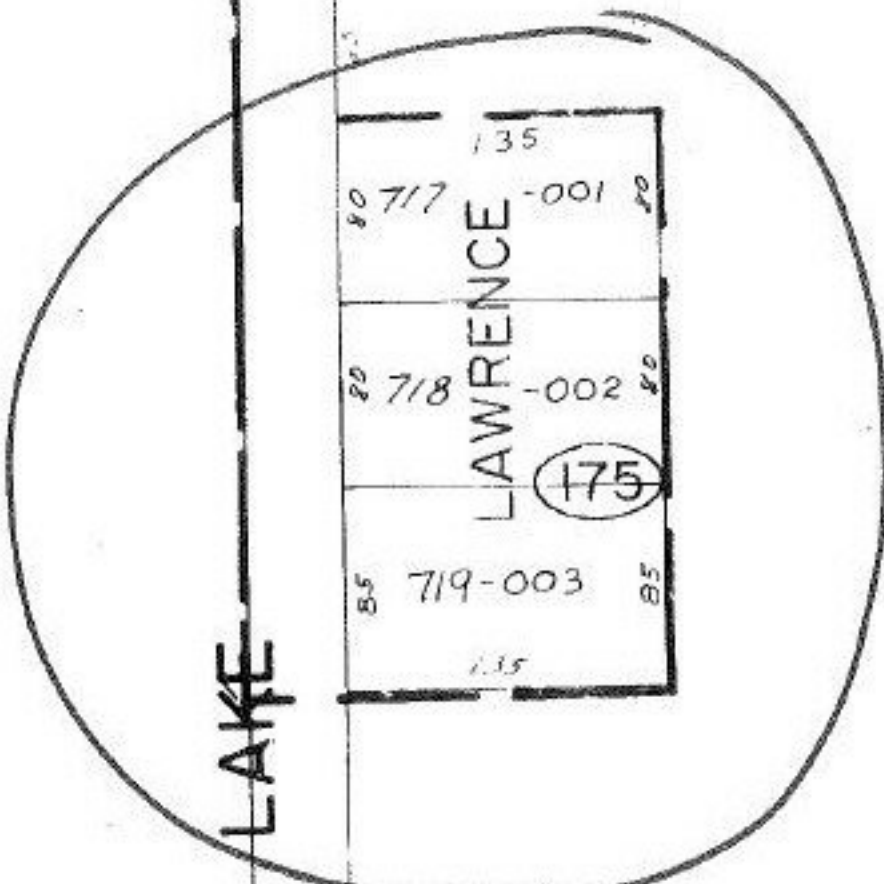
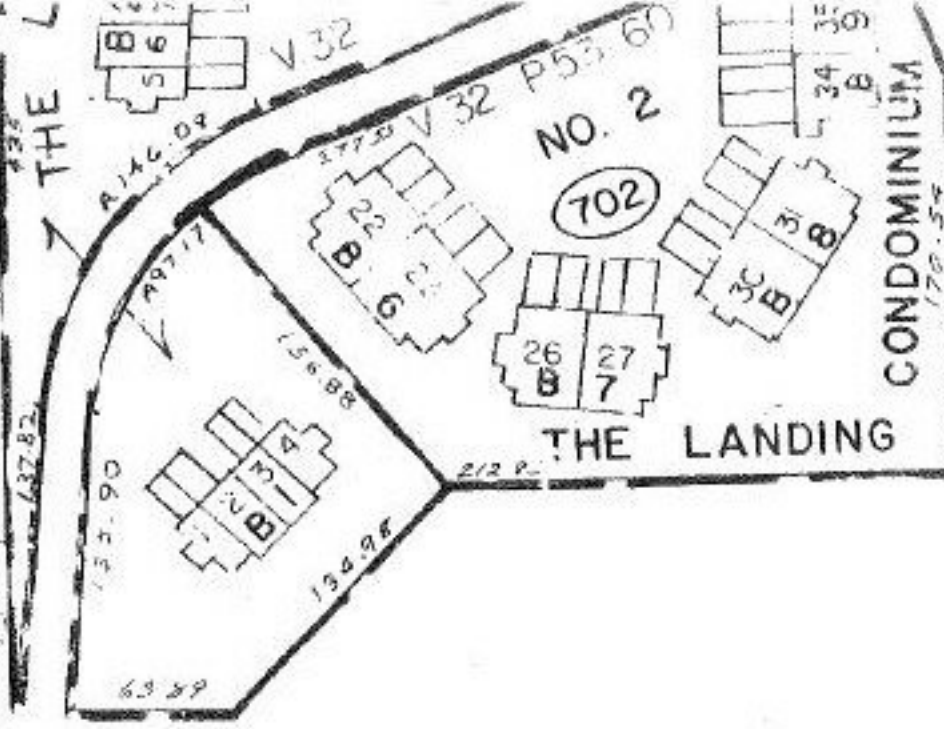
715-016

SUB.

716-017

V. 17 P. 10

135



135  
 80 717-001 80  
 LAWRENCE  
 80 718-002 80  
 85 719-003 85  
 135

MAP CORRECTION ONLY

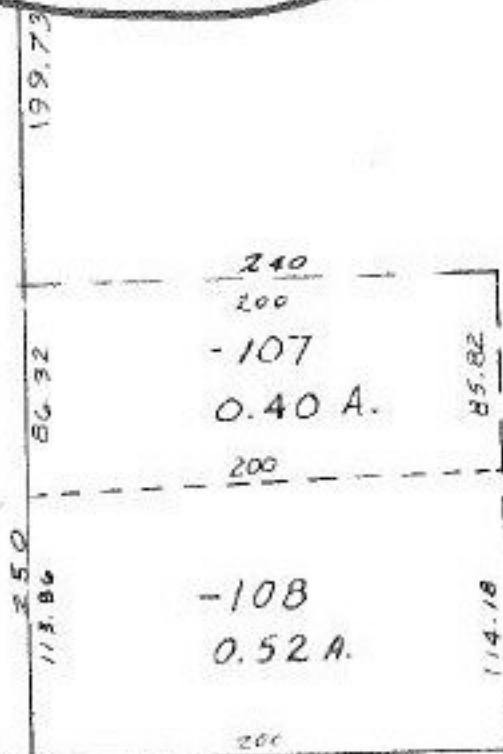
Pt. 09-00-018-176-106

Pt. 15.98 Ac.

#12713

APPROVED LORAIN CO. MAP DEPT.
DATE 5-16-79
PAGE A-00-018-K
BY <i>[Signature]</i>
VOID AFTER

5-16-79  
*[Signature]*



240  
 200  
 -107  
 0.40 A.  
 200  
 85.82  
 240  
 200  
 -108  
 0.52 A.  
 114.18  
 200

WALKER

399.70

03