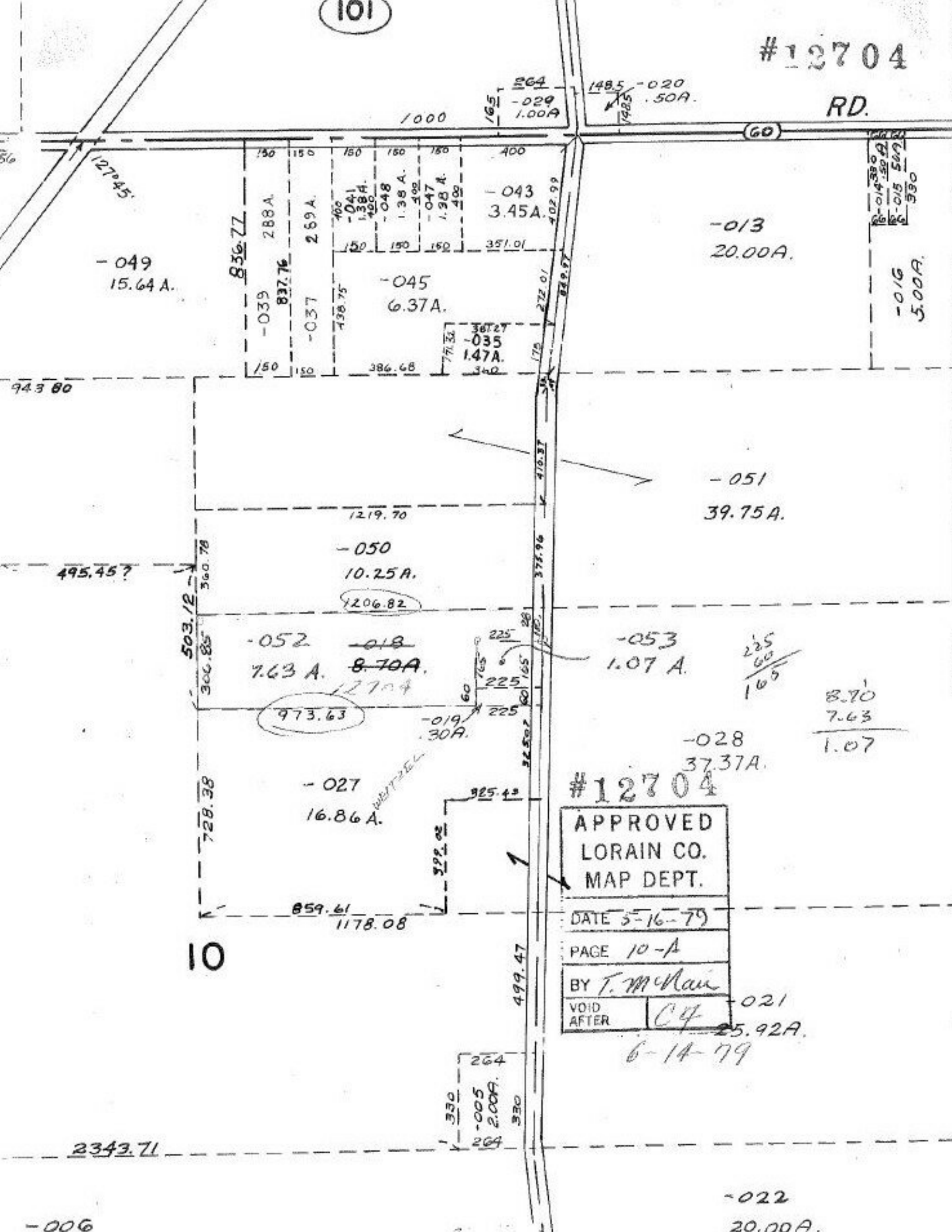


(101)

#12704

RD.

(60)



#12704

APPROVED  
LORAIN CO.  
MAP DEPT.

DATE 5-16-79

PAGE 10-A

BY T. McNeil

VOID AFTER C4

225  
60  
165

8.70  
7.63  
1.07

-021  
25.92A.

6-14-79

10

-006

-022  
20.00A.