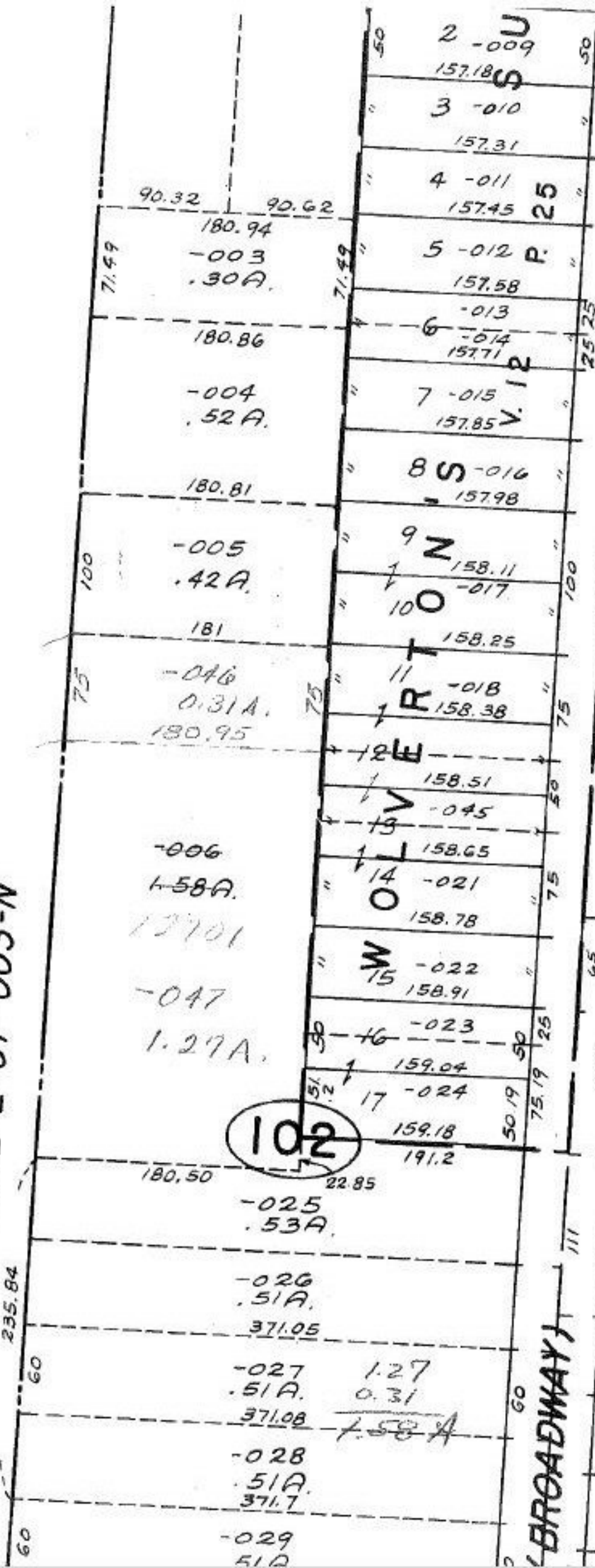


SEE 2-01-003-N

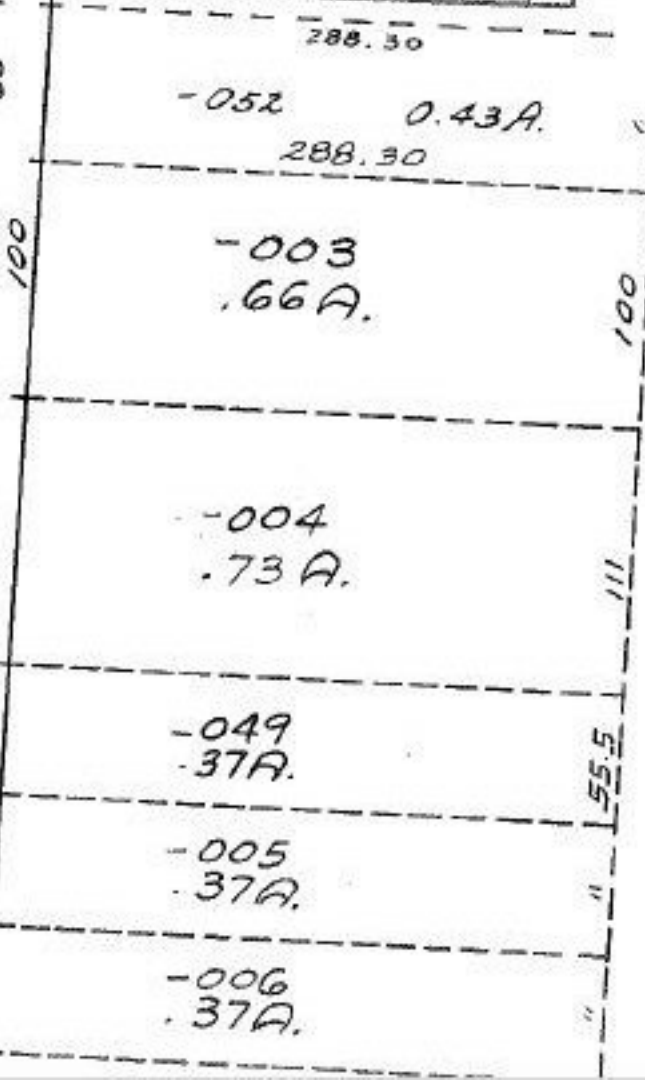


62°51' 255.5
 62°51' 174
 -001
 .72A
 #12701

JUN 15 1979

-053
 3.60A
 #12701

APPROVED	
LORAIN CO.	
MAP DEPT.	
DATE 5-15-79	
PAGE 3-00-113-A	
BY Carolyn F	
VOID	12701
AFTER	



BROADWAY