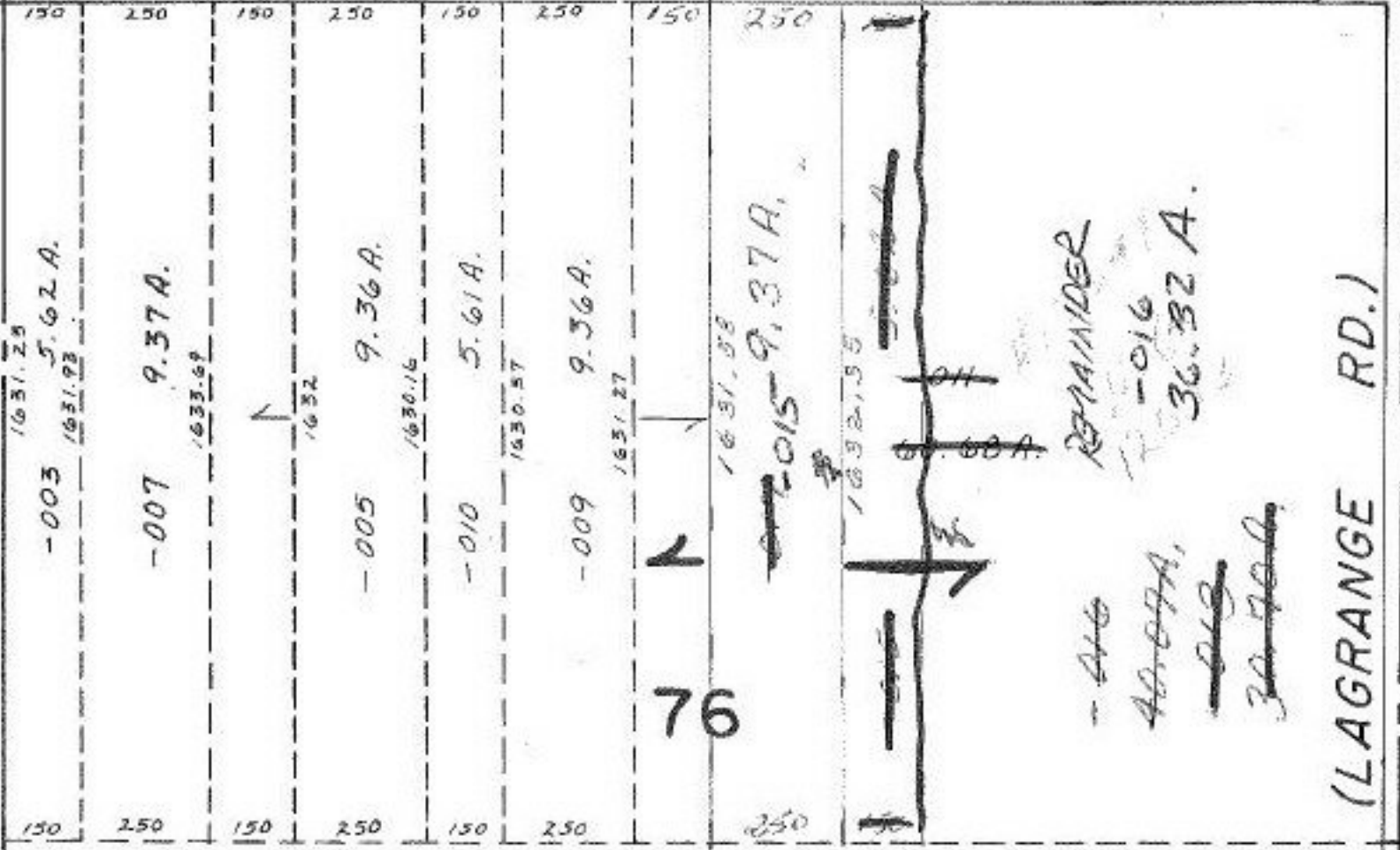
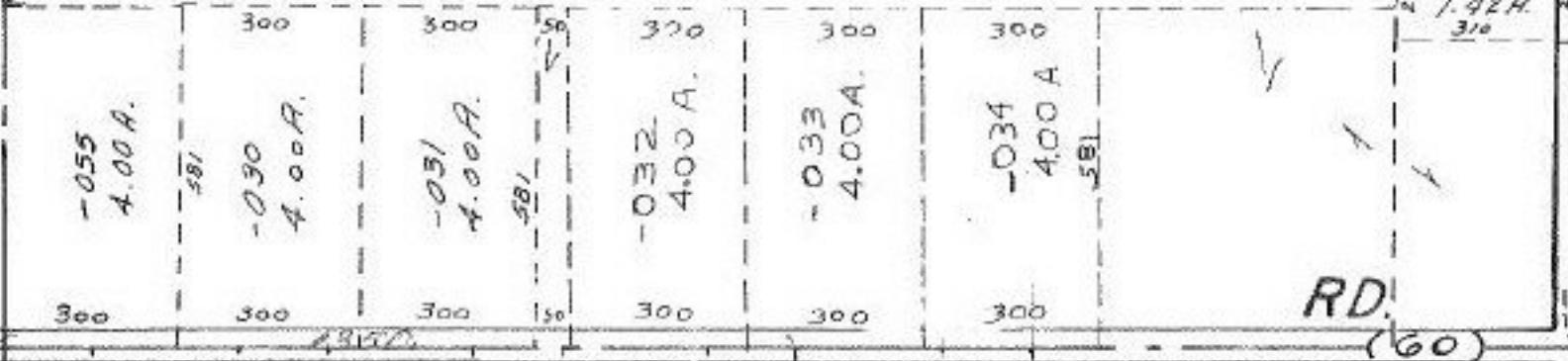


#12673

-056
13.64 A.

310	019
310	017
310	015
310	014
310	012
310	011
310	010
310	009
310	008
310	007
310	006
310	005
310	004
310	003
310	002
310	001

2111 64



#12673

OCT 19 1979

-002
66.66 A.

REDRAWN
T.M.
5-9-79

APPROVED
LORAIN CO.
MAP DEPT.
DATE 5-4-79
PAGE 15-F
BY [Signature]
VOID AFTER 12673

-001
50.00 A.