

#12671

#12671

APPROVED
 LORAIN CO.
 MAP DEPT.
 DATE 5-14-79
 PAGE 15-6
 BY T. McNamee
 VOID
 AFTER

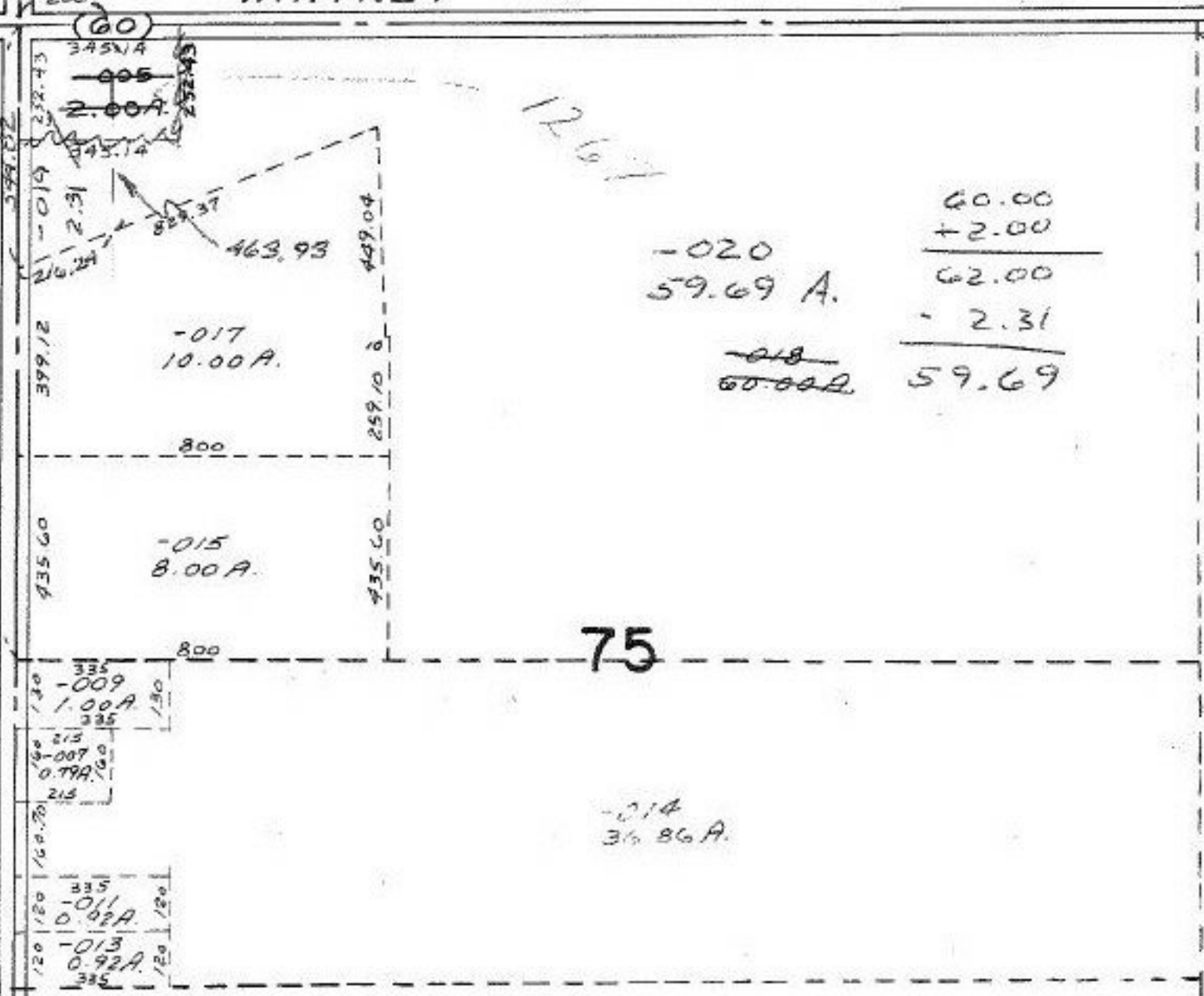
OCT 19 1979

(LAGRANGE RD.)

1509.34

200

WHITNEY



-003
80.00A.

#11468

13
165

429

-002 #11
4.59A.

-020
59.69 A.

60.00
+2.00
62.00
-2.31
59.69

~~60.00A~~

-017
10.00A.

-015
8.00A.

75

-014
36.86A.

335
-009
1.00A
335

215
-007
0.79A
215

335
-011
0.92A
335

335
-013
0.92A
335

-004 9.00A.

-001
17.00A.

-003