

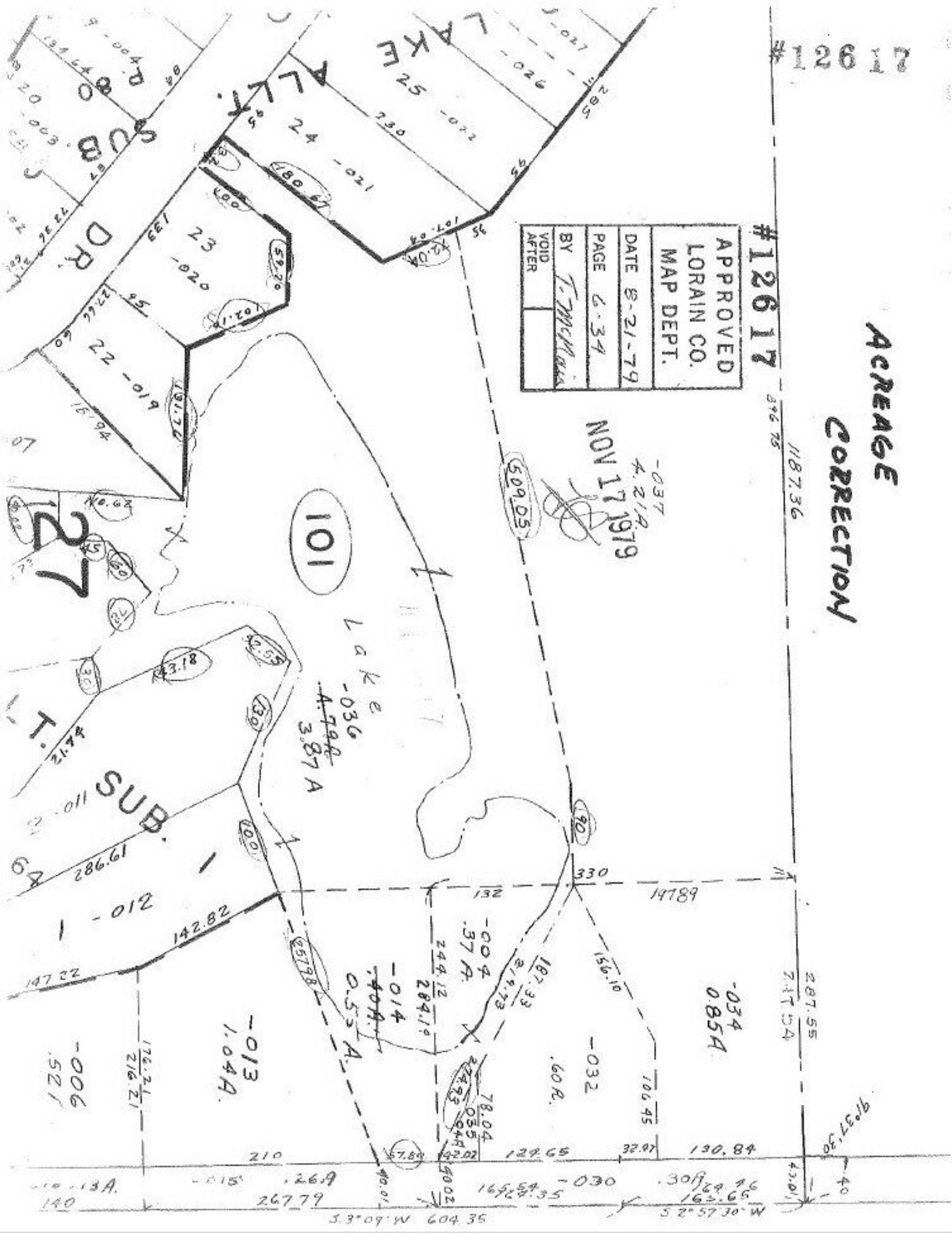
ACREAGE CORRECTION

#12617

1187.36
396.75

APPROVED
LORAIN CO.
MAP DEPT.
DATE 8-21-79
PAGE 6-34
BY T. McManis
VOID AFTER

-037
A. 2/19
NOV 17 1979



101

LAKE
-036
~~4.79A~~
3.87A

27

BUS SUB
110.2

-034
0.85A

-032
.60R.

-013
1.04A.

-014
~~4.09A.~~
0.55A.

-006
.521

309.29
162.65

267.79

5.3°09' W 604.35

W. 0°55' 52.57