

105

104

JUN 15 1979

#12611  
#12612

APPROVED  
LORAIN CO.  
MAP DEPT.

DATE 4-20-79

PAGE 300-107B

BY *[Signature]*

VOLD AFTER

DUNTON W 401.1  
325

-034  
.16 A.  
183.73

-035  
.59 A.

-008  
1.00 A.

380.6  
3°37'E.

-009  
0.65 A.  
424.9

-010  
4.05 A.

-028  
0.498 A.

-029  
0.96 A.

-030  
1.11 A.

-038  
0.36 AC.  
40 FT. 247.80

0.43 AC.  
279.44 320.61

0.84 AC.  
Pt. 0.99 A.

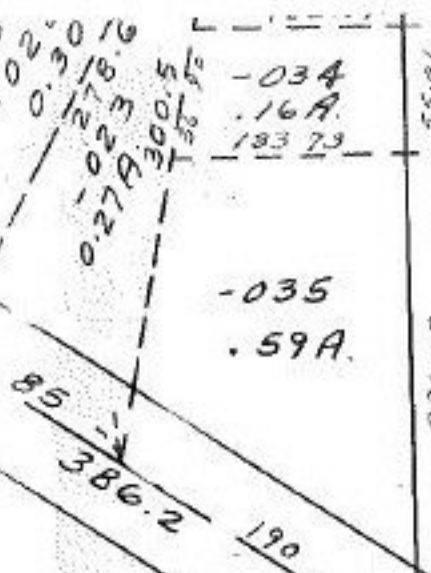
-034  
.36 A.

SEE 300-112-B

Per Survey  
McGlinchy & Associates

69  
47  
146  
43  
103

Pt. -027  
Pt. 4.89 A.



617.28