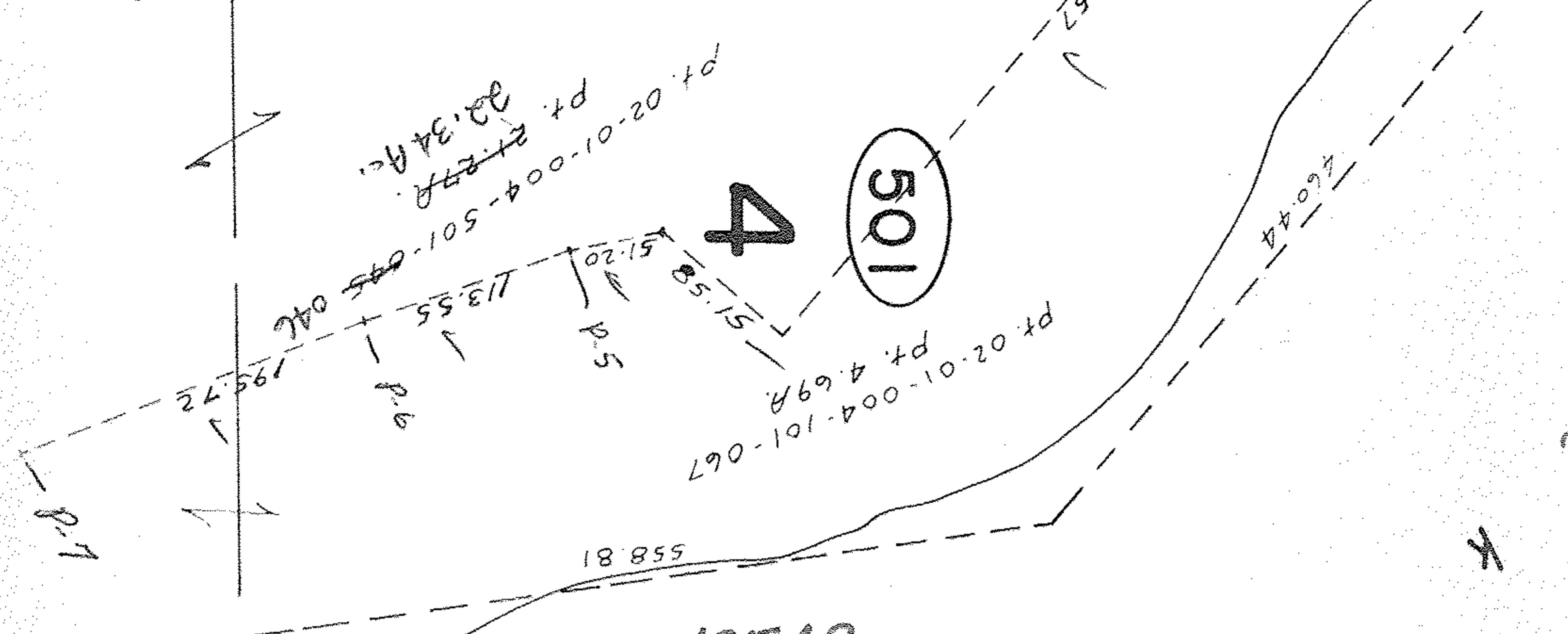


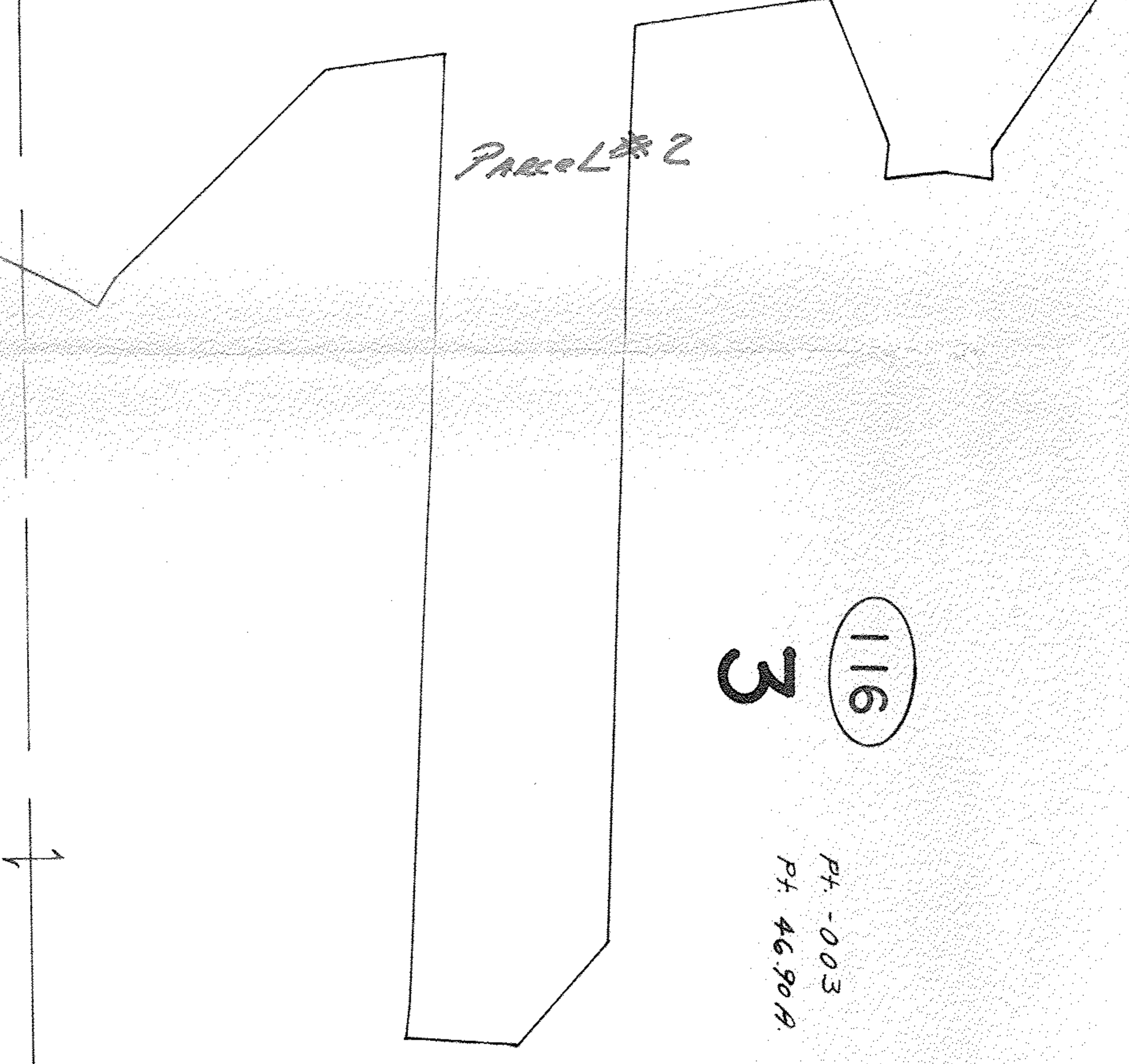
DONE!
T.M. Nair
3-26-79
4-12-79



12543
 T.M. Mc Nair
 3-26-79
 02-01-003-C, D, F
 02-01-004-A

Republic Steel To
 City of Lorain Dock
 AREA

SEE 2-01-003 C



Pt. - 003
 Pt. 46.90A

APPROVED	
LORAIN CO.	
MAP DEPT.	
DATE 3-26-79	
PAGE 2-01-003-A	
BY T.M. Nair	
VOID AFTER	

12543