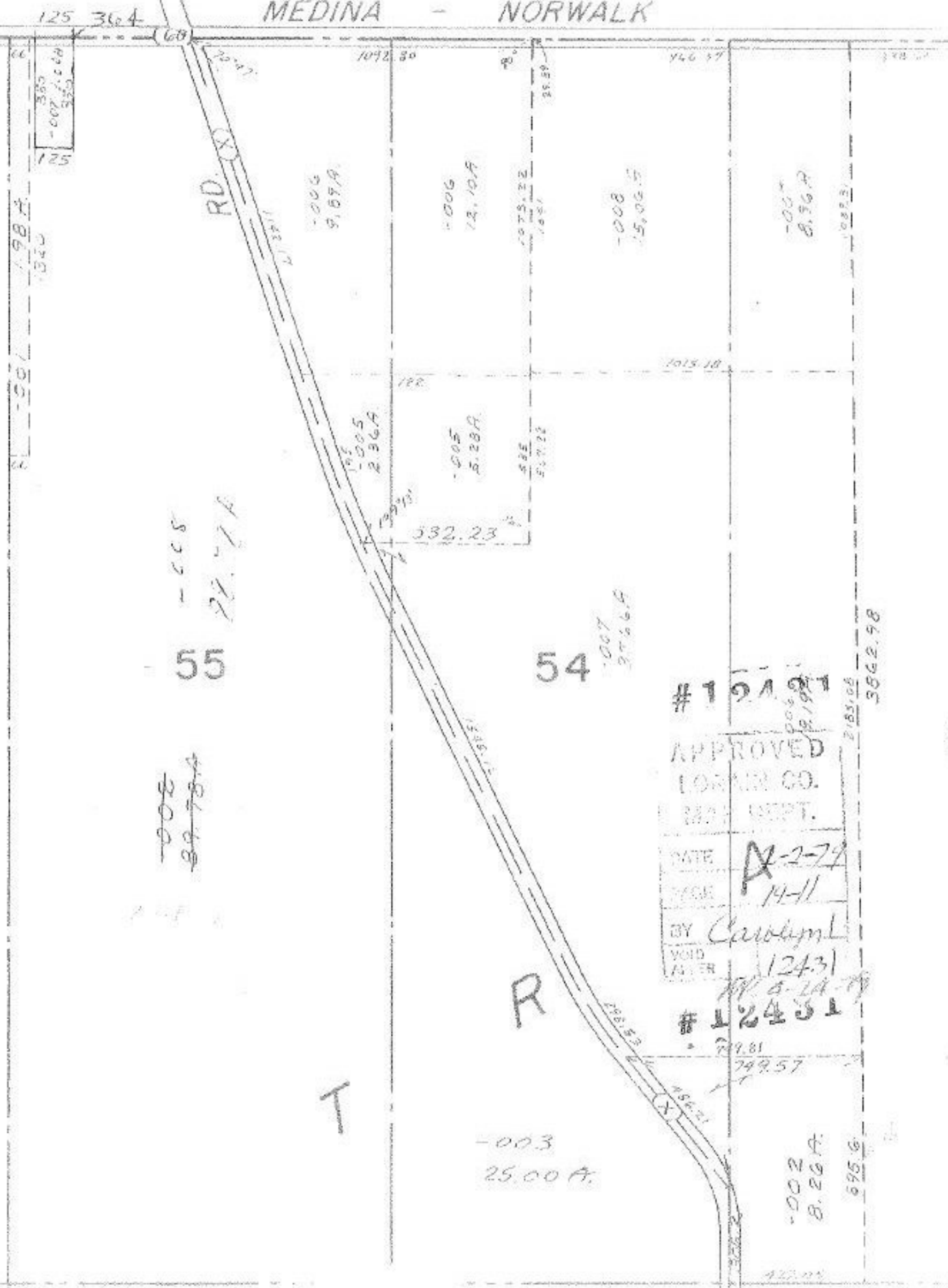


12431

MEDINA - NORWALK

18



55
-CCS
21.71A

54
-007
27.66A

~~-008~~
~~89.78A~~

12431
 APPROVED
 LORAIN CO.
 REC. DEPT.
 DATE 12-2-79
 BY Carolyn L.
 VOID AFTER 12431
 # 12431

-003
25.00A

-002
8.26A
695.6