

24.13A

12428

20864

-001
51.14A

542.28

-001 2612.1 628A

#12428

APPROVED
 LORAIN CO.
 MAP DEPT.
 DATE 2-1-79
 PAGE 15-F
 BY *[Signature]*
 VOID AFTER 12428

-006
36.504

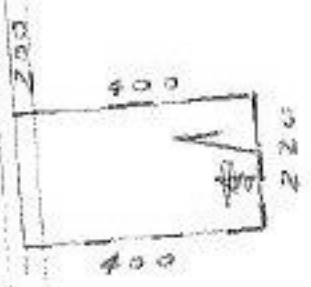
MAR 9 1979

FILE

97

-003
40.00A

WHITEHEAD



1692

-007
35.20

~~59.00A~~

1006

-008
23.50A

-009
20.00



542.31

WEBSTER 1692

506 1006

LAGRANGE TWP.

SCALE: 1" = 400'